

## “Emil Gherman-85 JT“ C 25.12.2016

Preliminary award

Judge: **Karol Mlynka**, Slovakia

39 fairy originals (24 H#, 3 HS#, 1 H+, 4 H=, 1 H==, 4 ser- and 2 #2) from 19 authors of 9 countries - Czechia, France, Germany, Greece, Hungary, Italy, Romania, Russia and Slovakia - were published in *Revista de șah “e4 e5”* to celebrate “Emil Gherman-85 JT“ C 25.12.2016. Warmly congratulations! The level of the non-standard **informal Jubilee Tourney** with free theme and unlimited entries was good, especially at the prices.

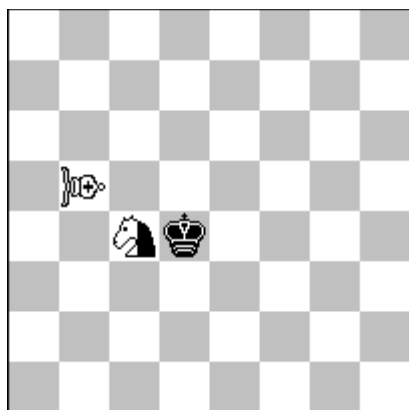
In this international competition of chess compositions occurred following **fairy conditions**: *Alphabetic Chess, Antircirce, Black Must Capture, Black Ultra-Schachzwang, Circe, Eiffel Chess, Einstein Chess, Equipollents Circe, Grid Chess, KoeKo, Madrasi, Messigny Chess, PWC, Sentinelles Pion Advers, Supercirce, Take & Make Chess, Vogtlaender Chess*. **Fairy pieces**: *Andernach-Eagle, Andernach-Equihopper, Andernach-Grashopper, Andernach-Nonstop-Equihopper, Camel, Cardinal, Eagle, Erlking, Equihopper, (neutral) Gnu, Grashopper, Leo, Maorider, Moose, Nightrider, Orphan, Rose, (royal) Sparrow, Zebra*.

[http://www.chessplayer.ro/files/e4\\_e5\\_no33.pdf](http://www.chessplayer.ro/files/e4_e5_no33.pdf) , [http://www.chessplayer.ro/files/e4\\_e5\\_no34.pdf](http://www.chessplayer.ro/files/e4_e5_no34.pdf)

Ján GOLHA

**1<sup>st</sup> Prize**

“Emil Gherman-85 JT“ C 25.12.2016



**H#2,5** 0. 4.1.1.1.1 (1+1+1)

C<cardinal>b5

EquipollentsCirce & Take&MakeChess

**1<sup>st</sup> Prize:** J. Golha (Slovakia), 11 "e4 e5" Nr. 33, I - VI 2016:

**I. 1...nSd2** 2.Kc3 Cc4 3.Kxc4-g1[+wCg2] Ca8#,

**II. 1...Cxc4-d6[+nSe5]** 2.Kxe5-c6[+nSd7] Cc5 3.Kxc5-g8[+wCg7] Ca1#,

**III. 1...Cc6** 2.Kxc4-b6[+nSa6] nSb4 3.Ka7 Ch1#,

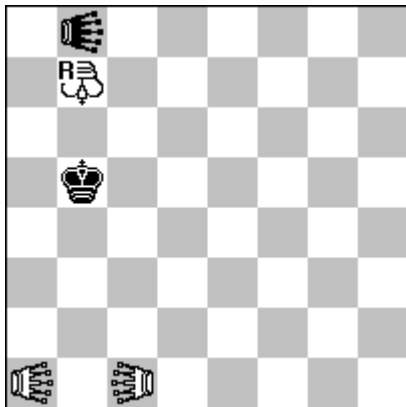
**IV. 1...Cb8** 2.Kd5 Cxc4-d6[+nSe2] 3.Kxd6-b1[+wCb2] Ch8#.

*An admirable Three-men-problem without wK with four chameleon-echo mates in all corners and fairy piece Cardinal as well as neutral Knight by combined fairy conditions Equipollents circe and Take & Make chess. This Wenigsteiner as masterpiece is an emotional winner of the tournament.*

Harald GRUBERT

**2<sup>nd</sup> Prize**

"Emil Gherman-85 JT" C 25.12.2016



**H#4            3.1...**            (3+2)  
royal=SW<sparrow>b7  
M<moose>c1, EA<eagle>a1, b8

**2<sup>nd</sup> Prize:** H. Grubert (Germany), 26 "e4 e5" Nr. 34, VII - XII 2016:

**I. 1.Ka4** EAb4 2.Ka3 rSWa5 3.EAc4 EAc3 4.EAb3 Mb4#.

**II. 1.Ka5** EAb5 2.Ka4 rSWa6 3.EAc5 EAc4 4.EAb4 Mb5#,

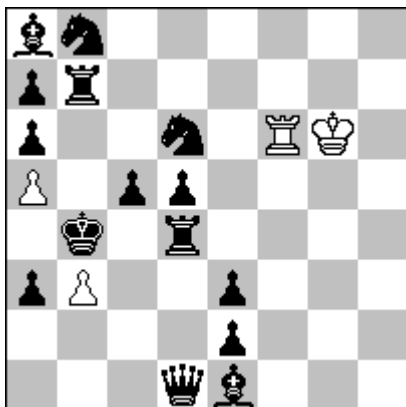
**III. 1.Kb4** rSWa7 2.EAc4 EAb7 3.EAb5+ EAc5+ 4.Ka5 Mb6#,

*Delicious 3-fold chameleon-echo model-mates in helpmate fourmover. Very nice Tanagra by using of royal Sparrow, Eagle and Moose.*

Lev GROLMAN, & Vladislav NEFYODOV

**3<sup>rd</sup> Prize**

"Emil Gherman-85 JT" C 25.12.2016



**H#2,5** 0.1.1.1.1.1 b) wBf6 (4+15)  
Take&MakeChess

**3<sup>rd</sup> Prize:** L. Grolman, & Vl. Nefyodov (Russia), 28 "e4 e5" Nr. 34, VII - XII 2016:

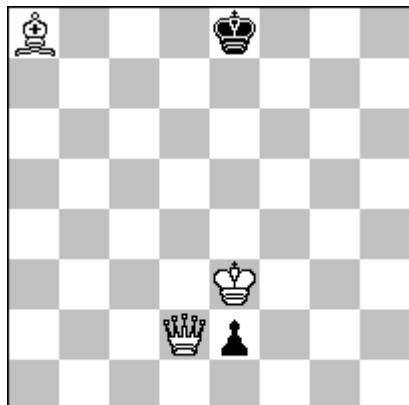
**a) 1...Rxd6-f7** 2.Bc3 Rxb7-c7 3.Bc6 Rxc6-b7#; **b) 1...Bxd4-h4** 2.Rb5 Bxe1-f2 3.Qg1+ Bxg1-e1#.

*Very attractive diagonal-orthogonal play with line-clearance and change of function by Black self-blocks in Take & Make chess. The result are model mates with virtual Switchback on the twice guarded squares from the initial position.*

Anatoly STYOPOCHKIN

**4<sup>th</sup> Prize**

"Emil Gherman-85 JT" C 25.12.2016



**H#3** KoeKo (3+2)

b) Ba8→a3, c) Ba8→f8, d) Ke8→c6

**4<sup>th</sup> Prize:** A. Styopochkin (Russia), 2 "e4 e5" Nr. 33, I - VI 2016:

**a) 1.e1=Q+** Qd7 2.Qd2 Bc6 3.Qd6 Qd8#; **b) 1.e1=R+** Kf2 2.Rd1 Qa2 3.Rd8 Qf7#;

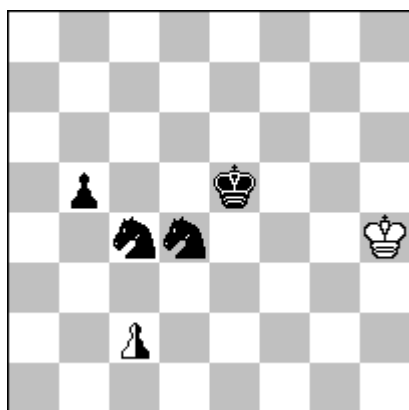
**c) 1.e1=B** Qd4 2.Bc3 Qg7 3.Bf6 Qg6#; **d) 1.e1=S** Qd5+ 2.Kc5 Qf3 3.Kd4+ Qd1#.

*KöKo with high quality AUW and Q-mates in a smart Tanagra. (In **Contact Chess** a move is possible only if the piece moved arrives on a square next to another unit.)*

Ladislav PACKA

**Special Prize**

"Emil Gherman-85 JT" C 25.12.2016



**H+1** 4.1 b) Sc4↔Ke5 (1+4+1)

**Special Prize:** L. Packa (Slovakia), 13 "e4 e5" Nr. 33, I - VI 2016:

**a) I. 1.nPc1=nQ** nQe3+, **II. 1.nPc1=nR** nRe1+, **III. 1.nPc1=nB** nBf4+, **IV. 1.nPc1=nS** nSd3+;

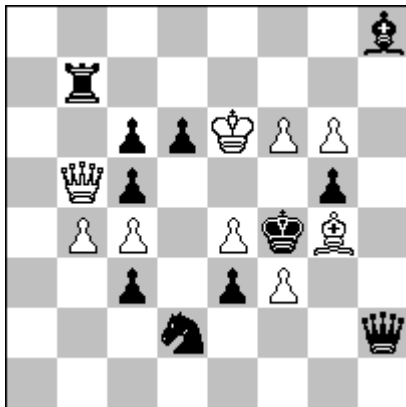
**b) I. 1.Kd5** nPc4+, **II. 1.Kb4** nPc3+, **III. 1.Sb3** nPxb3+, **IV. 1.Sd3** nPxd3+.

***AUW + Albino = HOTF** with complete change of the theme in the shortest miniature (onemover) and an unconventional stipulation (helpcheck) by using neutral Pawn.*

Alberto ARMENI

**1<sup>st</sup> Honourable Mention**

"Emil Gherman-85 JT" C 25.12.2016



**HS#3** 2 solutions (9+11)

**1<sup>st</sup> Honourable Mention:** A. Armeni (Italy), 5 "e4 e5" Nr. 33, I - VI 2016:

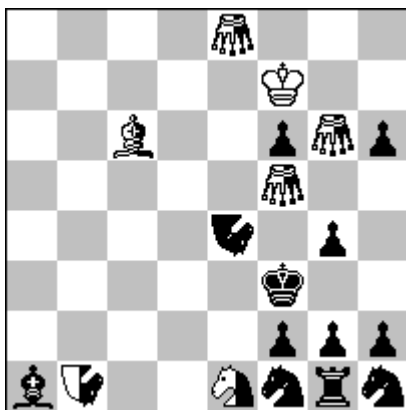
**I. 1.Qxc5** Bxf6 2.g7 Qh6 3.Qxd6+ Be5#, **II. 1.bxc5** Sxc4 2.cxd6 Qa2 3.Qe5+ Sxe5#.

2-fold creation of black batteries with annihilation after keys on c5. Theme of the 10<sup>th</sup> WCCT (section selfmates) shown in a helpselfmate, where both variations end with Black mating move made to the same square, played by different black pieces.

Franz PACHL

**2<sup>nd</sup> Honourable Mention**

"Emil Gherman-85 JT" C 25.12.2016



**h#2** 3.1.1.1 (1+12+6)

Take&Make-Chess; neutral pieces

Zebra b1, e4, Maorider c6,

Rose e8, f5, g6, Camel e1

**2<sup>nd</sup> Honourable Mention:** Fr. Pachl (Germany), 3 "e4 e5" Nr. 33, I-VI 2016:

**I. 1.Bc3** nROe8xc3-a1+ 2.nCA~~d~~4 nZxd4-c1#,

**II. 1.Bd4** nROf5xd4-a1+ 2.nAO~~d~~4 nCAxd4-e6#,

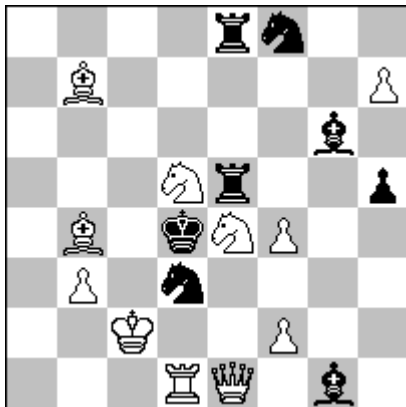
**III. 1.Be5** nROg6xe5-a1+ 2.nZ~~d~~4+ nAOxd4-b1#.

Three homogeneous solutions in Take & Make chess with neutral fairy pieces and geometrical effects, but a bit heavy construction. (**Rose** moves like a Nightrider but on a circular path.)

Hubert GOCKEL

**3<sup>rd</sup> Honourable Mention**

"Emil Gherman-85 JT" C 25.12.2



#2 EiffelChess (11+8)

**3<sup>rd</sup> Honourable Mention:** H. Gockel (Germany), 25 "e4 e5" Nr. 34, VII - XII 2016:

Try: 1.h8=S? ~ 2.Rxd3# **A**, 1...Rxe4! **a**, Try: 1.h8=B? ~ 2.Qe3# **B**, 1...Bxe4! **b**,

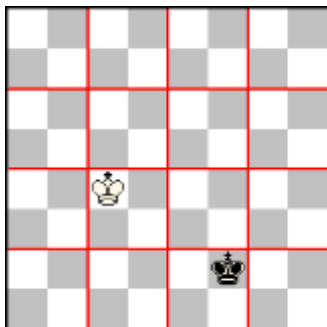
Solution: **1.Sc3!** ~ 2.Se2#, 1...Rxe4 **a** 2.Rxd3# **A**, 1...Bxe4 **b** 2.Qe3# **B**, 1...Rd5 2.Sb5#, 1...Bxf2 2.Qxf2#.

The **Dombrovskis** theme with minor promotions in the tries and refutations on the same square in Eiffel chess. Theme A defence with self-paralysis. (In this tournament were two direct twomovers.)

Jaroslav ŠTÚŇ

**Special Honourable Mention**

"Emil Gherman-85 JT" C 25.12.2016



**H#3** b)Kf2→f7 (1+1)

GridChess & MessignyChess

& Sentinelles PionAdvers

**Special Honourable Mention:** J. Štúň (Slovakia), 23 "e4 e5" Nr. 34, VII - XII 2016:

**a) 1.Kf2↔Kc4** Ke3[+bPf2] 2.Kc5[+wPc4] Kd3[+bPe3] 3.Kd4[+wPc5] Pc5↔Pe3#;

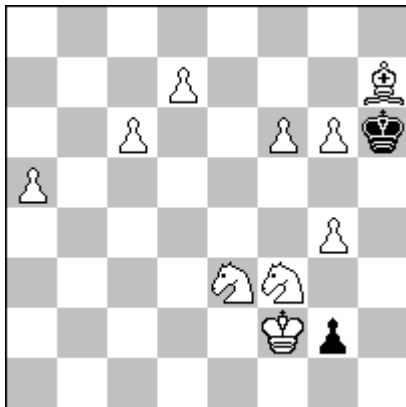
**b) 1.Kf6[+wPf7]** Kd5[+bPc4] 2.Kxf7[+wPf6] Ke5[+bPd5] 3.Ke6[+wPf7] Pf7↔Pd5#.

An interesting combination of fairy conditions Grid chess, Messigny chess and Sentinelles Pion adverse in Two-men-problem. Very good used non-standard chess board, because in **Grid chess** the board is divided not only into its usual 64 squares, but also into 16 larger squares consisting of 4 normal squares each, while all the moves by both sides must cross at least one line of the grid.

Alberto ARMENI

**Commendation\***

"Emil Gherman-85 JT" C 25.12.2016



**H=2** 4 solutions (10+2)  
Madrasi & Circe & Black must capture

**Commendation:** A. Armeni (Italy), 29 "e4 e5" Nr. 34, VII - XII 2016:

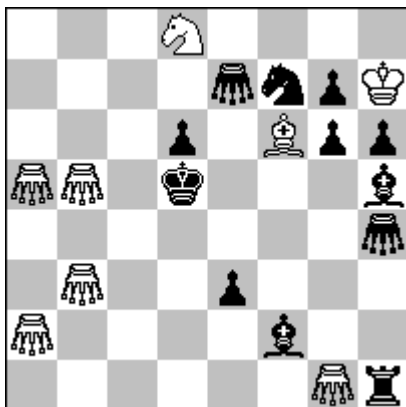
I. 1.g1=Q+ Kxg1 [+bQd8] 2.Qxa5 [+wPa2] d8=Q=, II. 1.g1=S Kxg1 [+bSb8] 2.Sxc6 [+wPc2] d8=S=,  
III. 1.g1=R Sd1 2.Rxd1 [+wSb1] d8=R=, IV. 1.g1=B+ Kxg1 [+bBf8] 2.Be7 d8=B=.

**Babson task** in helpstalemate twomover with fairy conitions Madrasi & Circe & Black must capture, but by repeated wK-move. Note that in **Madrasi chess** opposing units are paralyzed when they attack each other and paralyzed units cannot consequently move, capture or give check.

Dieter MÜLLER & Franz PACHL

**Commendation**

"Emil Gherman-85 JT" C 25.12.2016



**H#2** 2.1.1.1 PWC (8+12)  
Grasshoppers

**Commendation:** D. Müller & Fr. Pachl (Germany), 32 "e4 e5" Nr. 34, VII - XII 2016:

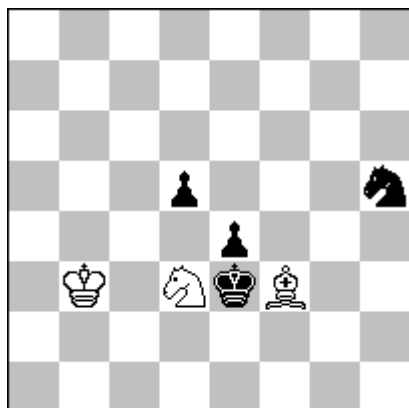
I. 1.Rxg1 [+wGh1] Gxh5 [+bBh1] 2.Be4 Gc5#, II. 1.Bxg1 [+wGf2] Gxf7 [+bSf2] 2.Se4 Gc4#.

Both keys on the same square and block change on e4 with model-mates in Platz-Wechsel-Circe. (When in **PWC** a unit captured, is replaced on the square just vacated by its captor. **Grasshopper** moves along Queen-lines over another unit of either colour to the square immediately beyond that unit.)

Vito RALLO

### Commendation

"Emil Gherman-85 JT" C 25.12.2016



**H#3**      2.1.1.1.1.1      (3+4)  
Take & Make Chess

**Commendation:** V. Rallo (Italy), 34 "e4 e5" Nr. 34, VII - XII 2016:

**I. 1.Kd2 A Bxe4-e3+ 2.Kd1 Kc3 3.Sf4 B Bxf4-h5#,**

**II. 1.Sf4 B Sxf4-e2 2.Kd2 A Sc3 3.Kc1 Bxe4-e3#.**

*Chameleon-echo model-mates in helpmate miniature with Take & Make chess.*

### ANNEX: Some fairy terms

<ul style="list-style-type: none"><li>○ <b>Cardinal (C)</b> - Bishop which can rebound (only once) like a billiard ball when he reaches a square on the edge of the board. The rebound occurs on the edge of the board.</li></ul>
<ul style="list-style-type: none"><li>○ <b>Equipollentscirce</b> - When a capture is made, the captured unit (except a King) is replaced its rebirth square (the symmetrical square of the departure square in relation to the arrival square) if it is empty : otherwise, the captured unit vanishes.</li></ul>
<ul style="list-style-type: none"><li>○ <b>Take &amp; Make Chess</b> - Upon capturing a unit X, a unit Y must continue from the square of capturing to make a single non-capturing move with the movement of X. If such a move does not exist, X cannot be captured by Y.</li></ul>
<ul style="list-style-type: none"><li>○ <b>Eagle (EA)</b> - A Grasshopper which pivots 90° at the hurdle.</li></ul>
<ul style="list-style-type: none"><li>○ <b>Moose (M)</b> - A Grasshopper which pivots 45° at the hurdle.</li></ul>
<ul style="list-style-type: none"><li>○ <b>Sparrow (SW)</b> - A Grasshopper which pivots 135° at the hurdle.</li></ul>
<ul style="list-style-type: none"><li>○ <b>Royal piece (rX)</b> - A piece that executes a function of the King on the board.</li></ul>
<ul style="list-style-type: none"><li>○ <b>Mao (MA)</b> - Chinese Knight, which is a Rider, moving along a bent line to the arrival square of a normal Knight, first orthogonally then diagonally.</li></ul>
<ul style="list-style-type: none"><li>○ <b>Eiffel Chess</b> - Related to Madrasi, but the paralysis occurs rather differently, in the sequence P-S-B-R-Q-P. A Pawn paralyzes an enemy Knight; a Knight paralyzes an enemy Bishop, and so on. A paralyzed unit loses all powers except that of causing paralysis.</li></ul>
<ul style="list-style-type: none"><li>○ <b>Neutrality</b> - A unit with this characteristic may be regarded as of either colour by the side whose turn it is to play. Neutral pawns (F) promote to neutral pieces. For rebirths neutrals are (temporarily) of the colour opposite to that of the capturing piece.</li></ul>