



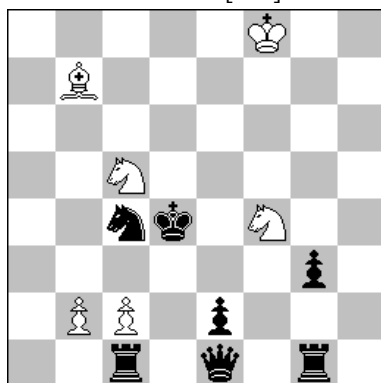
Associazione **P**roblemistica **I**taliana
www.accademiadelproblema.org

TTY FORMULA-ONE 2015

GP-9 : September 2015

AWARD

1st Place E. Navon [ISR]



H#2 B=Sc4>e3 6+7

A - diagram

1.Qd2(Qf2?) Sf-d3(Sg6?)

2.Qe3 Sb3(Se6?)≠

1.Qd2 Sg6? 2.Qe3 ?? [Se6?, Sb3?]

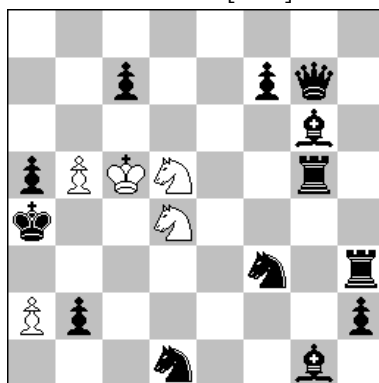
B - Sc4 > e3

1.Qc3(Qb4?) Sc-d3(Sd7?)

2.Qc4 Sxe2(Se6?)≠

1.Qc3 Sd7? 2.Qc4 ?? [Se6?, Sxe2?]

2nd Place M.J. Elbaz [MAR]



H#2 B=Ka4>a3 5+13

A - diagram

1.Se3(Sf2?) Sc2-A

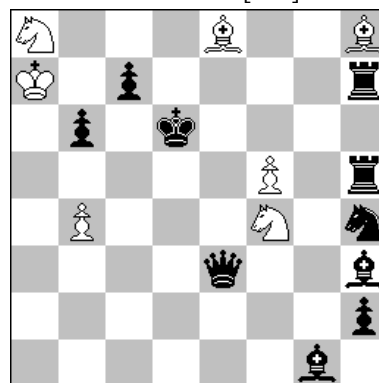
2.Se5(f5?) Sc3-B≠

B - Ka4 > a3

1.f5(Se5?) Sc3-B

2.Sf2(Se3?) Sc2-A≠

3rd Place M. Witztum [ISR]



H#2 2111 7+10

Solution 1

1.Sf3(Sxf5?) Sxb6(Sxc7?)

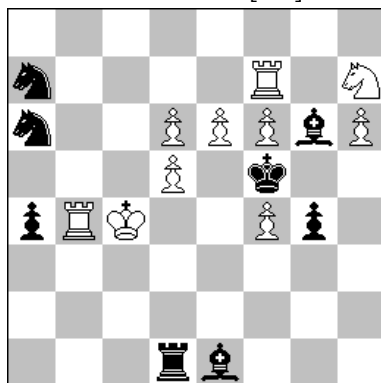
2.Sd4 Sc8≠

Solution 2

1.Sg6(Sxf5?) Sxc7(Sxb6?)

2.Se7 Sb5≠

4th Place M. Parrinello [ITA]



H#2 A-B-C 10+8

A - diagram

1.Bh4(Bc3?) Kc3 2.Bxf6+ Rxf6≠

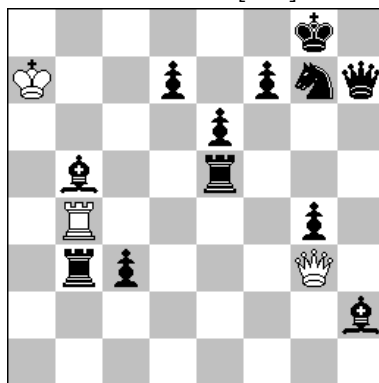
B - wBf7

1.Sc7(Sc5?) Kc5 2.Sxe6+ Bxe6≠

C - wSf7

1.Sc8(Sb5?) Kb5 2.Sxd6+ Sxd6≠

5th Place L.M. Martin [SPA]



H#2 2111 3+12

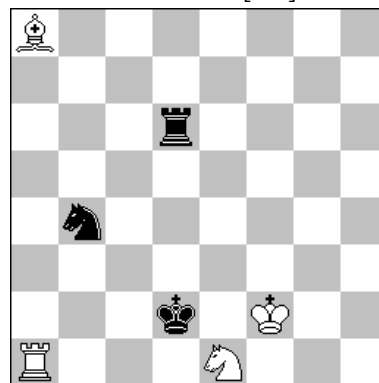
Solution 1

1.Ba4(Ba6?) Qxg4 2.Ra3 Rb8≠

Solution 2

1.Re3(Rc5?) Rxg4 2.Bg1 Qb8≠

6th Place A. Garofalo [ITA]



H#2 2111 4+3

Solution 1

1.Sa2(Sd5?) Be4 2.Sc3 Sf3≠

Solution 2

1.Rd3(Rc6?) Bf3 2.Rc3 Rd1≠