



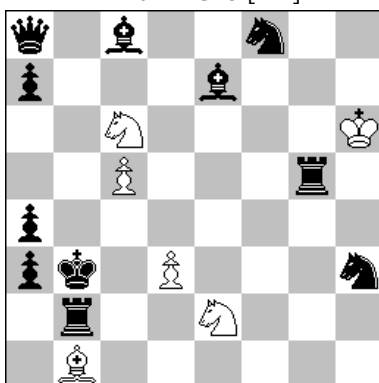
Associazione Problemistica Italiana  
www.accademiadelproblema.org

## TTy FORMULA-ONE 2015

GP-6 : June 2015

**AWARD**

### 1<sup>st</sup> Place M. Parrinello [ITA]

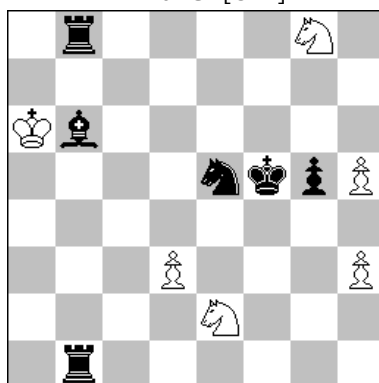


H≠2      B=Kh6>c7      6+11  
2 solutions

A - diagram

**1.Rg4 Kh5 2.Rb4 Sa5 (Sc-d4?)≠**  
**1.Rxc5 Kg7 2.Rc3 Se-d4 (Sc1?)≠**  
B - Kh6 > c7  
**1.Bxc5 Kd8 2.Bb4 Sc-d4 (Sa5?)≠**  
**1.Bf6 Kd6 2.Bc3 Sc1 (Se-d4?)≠**

### 2<sup>nd</sup> Place D. Müller [GER]

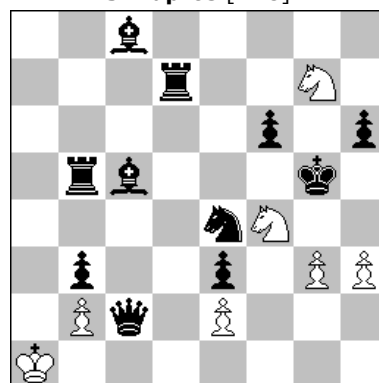


H≠2      A-B-C-D      6+6

A - diagram

**1.Be3 (Rf1?) Ka5 2.Bf4 Sd4≠**  
B - Pd3 > d5  
**1.Rf1 (Be3?) Kb5 2.Rf4 Sg3≠**  
C - Ph5 > d5  
**1.Rf8 (Bd8?) Kb7 2.Rf6 Se7≠**  
D - Ph3 > d5  
**1.Bd8 (Rf8?) Ka7 2.Bf6 Sh6≠**

### 3<sup>rd</sup> Place J. Kapros [ARG]



H≠2      3111      7+11

Solution 1

**1.Sc3 bxc3 2.Qg6 Sf-e6≠**

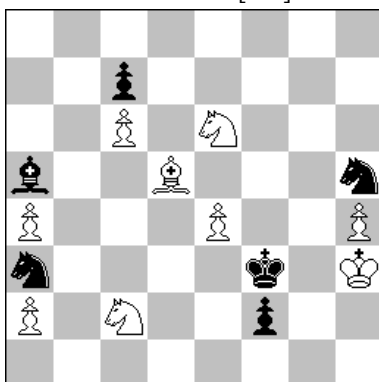
Solution 2

**1.Ba3 bxa3 2.Rf5 Sg-e6≠**

Solution 3

**1.Rd3 exd3 2.Bg4 h4≠**

### 4<sup>th</sup> Place A. Garofalo [ITA]



H≠2      3111      9+6

Solution 1

**1.Sc4 a3 2.Se3 Sc-d4≠**

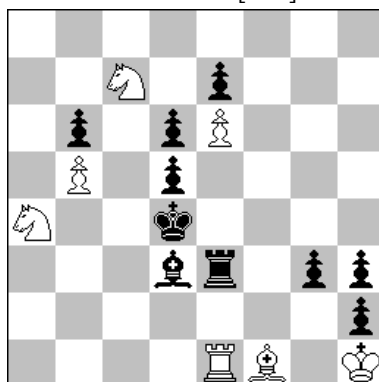
Solution 2

**1.Bd2 a5 2.Bf4 Se-d4≠**

Solution 3

**1.Sg3 h5 2.Se2 e5≠**

### 5<sup>th</sup> Place L.M. Martin [SPA]



H≠2      2111      7+10

Solution 1

**1.Bxb5!(A)[B~?] Bxb5 [zz]**

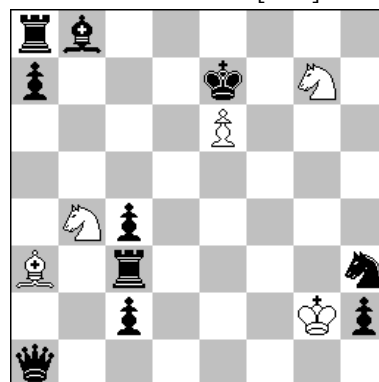
**2.Rxe6(B) Sxe6≠**

Solution 2

**1.Rxe6!(B)[R~?] Rxe6 [zz]**

**2.Bxb5(A) Sxb5≠**

### 6<sup>th</sup> Place R. Krättschmer [GER]



H≠2      2111      5+10

Solution 1

**1.Rg3+ Kxh2 2.Qf6 Sc6≠**

Solution 2

**1.Bg3 Kxh3 2.Rd8 Sd5≠**