



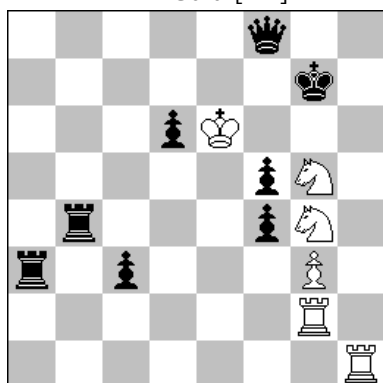
Associazione Problemistica Italiana
www.accademiadelproblema.org

TTy FORMULA-ONE 2015

GP-2 : February 2015

AWARD

1st Place
V. Tinebra [ITA]



H#2 A-B-C 6+8

A - diagram

1.fxg3 Sf2 2.gxf2 Se4#

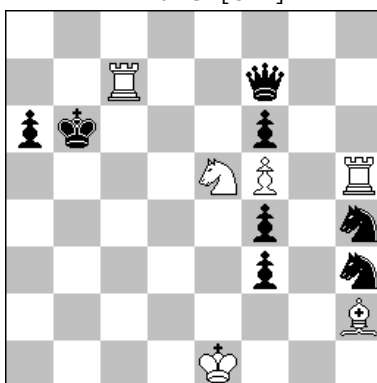
B - Rg2 > g1

1.fxg4 Sf3 2.gxf3 gxf4#

C - Pc3 > h6

1.hxg5 gxf4 2.gxf4 Se3#

2nd Place
D. Müller [GER]



H#2 B=Pf5⇔Pf4 6+8

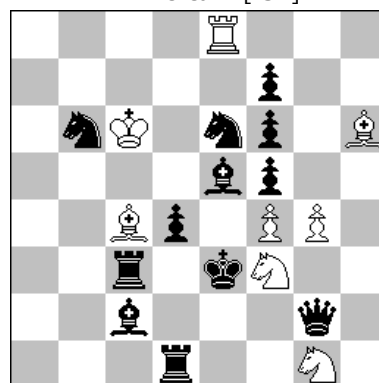
A - diagram

1.Sxf5 Bxf4 2.Se7 Sd7#

B - Pf5 ⇔ Pf4

1.Sxf4 Rxf5 2.Se6 Sc4#

3rd Place
M. Witztum [ISR]



H#2 B=Sg1>h1 8+12

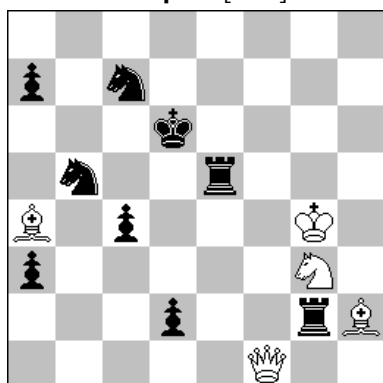
A - diagram

1.Qd2 Sxe5 2.Sxf4 Sd3#

B - Sg1 > h1

1.Rc-d3 Bxe6 2.Bxf4 Bd5#

4th Place
J. Kapros [ARG]



H#2 2111 5+9

Solution 1

1.Sc3 Qxc4 (Qf7?)

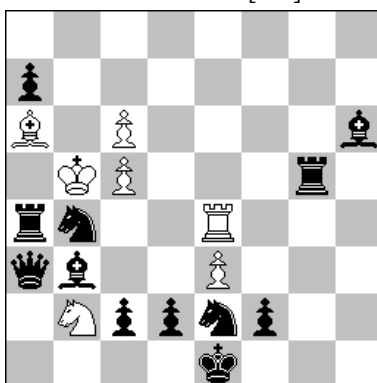
2.Rg-e2 (Rf2?) Sf5#

Solution 2

1.Sd4 Qf7 (Qxc4?)#

2.Rf2 (Rg-e2?) Se4#

5th Place
M. Parrinello [ITA]



H#2 2111 7+12

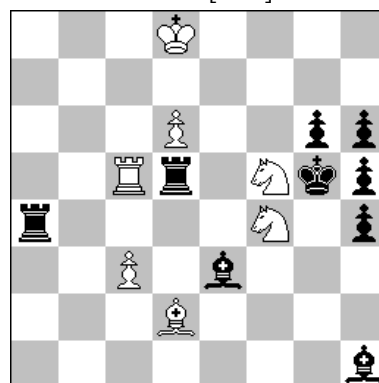
Solution 1

1.Sxc6 Kxc6 2.Sd4+ exd4#

Solution 2

1.Rxc5+ Kxc5 2.Sf4 exf4#

6th Place
J. Lois [ARG]



H#2 2111 7+9

Solution 1

1.Bxc5 Sxh6 2.Bb4 Sxd5#

Solution 2

1.Rxd2 Sxh5 2.Rg2 Sxe3#