

"Combinative separation" is really more a mathematical exercise than a strategic chess pattern. Gerhard Maleika is an outstanding exponent. His first quotation has 1..Se7 threatening 2.Sc6, Rf4, Rd5. All occur after 1...Sf8, 1...Sc5 prevents 2.Rf4, 1...Sb6 guards against 2.Rd5, while 1...Sb8 stops 2.Sc6. Unique mates follow 1...Sf6 (only 2.Sc6), 1...Se5 (only 2.Rf4), and 1...d2 (only 2.Rd5).

In the next example, a lone threat after 1.Qb5? (2.Qd7) is repelled by 1...Sf6! A double threat by 1.Qe6? (2.Qd7, Qc8) fares no better because of 1...fxe6! So the triple posed by 1.Qg4 (2.Qxg8, Qd7, Qc8) is required. 1...f6 doesn't stop anything. The first threat is denied by 1...Sh6, the second by 1...Ke8, and the third by 1...Bxb7. The singles are 1...f5 (only 2.Qxg8), 1...Se7 (only 2.Qd7), and 1...Sf6 (only 2.Qc8).

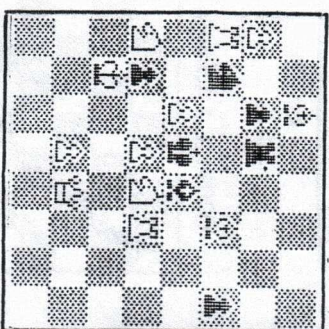
The final position is solved 1.Re8 (2.Qe2, Qe1, Qxd4). Each of these aims proceed on 1...a6. Under-promotions separate 1...g1=B (no 2.Qxd4), 1...g1=S (no 2.Qe2), and 1...g1=R (no 2.Qe1). 1...g1=Q leaves only 2.Qe2. 1...Kd2 forces the solo 2.Qxd4, and 1...d3 allows an exclusive 2.Qe1. This is a splendid illustration of Allumwandlung.

SYNTHETICS, By B.E.Chamberlain
8 Purcell Close, Grantham, Lincs., NG31 9QP

No.17 (diagram below). Three solutions received to date. As I suspected, no solver was able to improve economy, and maintain *all* the thematic pin-mates.

No.18. I have purposely selected a problem with a larger than usual setting this month, and I hope solvers enjoy the task provided for them. R.Bedoni, 1st Pr., Bilkeng-80 Mate in 2 moves. TRY: 1.Bxc4? (2.d4)
JT, 1993-4

- 1...bxc4; 2.Qxd5
- dxc4; 2.Sxc4
- dxe4; 2.Sf7
- fxe4; 2.Sxg4
- d4; 2.cxd4
- Ba7; 2.Qxc7
- BUT 1...c5!
- KEY: 1.Bxg4 (2.d4)
- 1...dxe4; 2.Sxc4
- 1...fxe4; 2.Sf7
- 1...fxg4; 2.Sxg4
- 1...f4; 2.gxf4



Solutions to B.E.C. (or J.F.L. for forwarding to B.E.C.) by 14.VII.2010, please.

Composing Tourneys. An email from Youness Benjelloun, editor of the magazine AN & YB (Problemes), announces two tourneys: (a) for orthodox 3 movers, any theme, Judge Dejan Glisic; (b) for studies, any theme, Judge Siegfried Hornecker. Email entries to Younessbenjelloun@gmail.com by 28.X.2010

Problem Observer

ISSN 1351-2137

Editor: J.F.Ling, 41 Tiverton Rd., Loughborough, Leics., LE11 2RU, England
e-mail address: j.ling@virginmedia.com
Sub-Editor: C.J.Ling

Price. One issue: 44p (overseas 67p or 1 reply coupon). Annual subscription: U.K. £2.64; Europe £4.32 or 6 reply coupons; elsewhere £4.20 or 6 reply coupons; air-mail £6.54 or 10 reply coupons.

Published in January, March, May, July, September and November

Vol. XXXIX, No.3, May 2010

(The subscription rates above reflect the recent annual increase in postal rates - U.K. +2p, Europe and elsewhere +4p, air-mail +7p; the price of the magazine is still 12p).

SOLUTIONS (MARCH)

D2074 (D.M.Howard) B-e4, waiting. Change of mate after BK flight (P.Michael, C.J.Morse). Simple but neat miniature (Dr.C.Grupen). Very nice (M.H.Thornton).
D2075 (D.J.Shire) Bxb4, thr. 2.Q-g3. B tries; sacrificial key; line-opening and closing (P.M.). Beautiful pair of problems (C.A.Grassano). Interesting comparison (M.H.T.). ? remove BPh4 (Dr.C.G.).

D2076 (D.J.Shire) B-d5, thr. 2.Q-e4. B tries; sacrificial try and key; line-opening and self-pin; refutation 1...P-d1=Q more obvious, so D2075 preferred (P.M.). This problem preferred because of the self-pins (Dom C.Stockford). Tell-tale WS, so D2075 preferred (C.J.M.). Strategic Analysis: 1...B-d3: closes c2-e4; opens a5-d5. 2.P-e6: opens f6-d4; anti-clears e5-e8.

D2077 (Alena Kozhakina) K-e2, waiting. 1...P-e3, K-b4,5; 2.R-h5: 1...K-d4; 2.R-c3. Tempting key (P.M.). Mate after 1...K-d4 difficult to spot (M.H.T.). Well done (A.A.Armeni).

D2078 (C.A.H.Russ) B-h5, thr. 2.Kxg7, B-g6. 1...P-g6; 2.Bxg6: 1...P-g5; 2.B-g4. How to deal with BPh7? (C.C.Frankiss). Nice key (C.A.G.). Simple but pleasing (C.J.M.).

O2079 (E.Zimmer) R-h1, R-g1; 2.R-h8, gRxg7: 1...aR-f1; 2.R-h7, R-R. Nice matching. In the second variation, the WR goes one square further, then so does the BR (M.H.T.). Almost a rotated echo, with close work by R's (Dr.C.C.Lytton).

O2080 (E.Zimmer) R-a8, K-d6; 2.K-b8, K-d7. (b) R-b7, aPxb7ch; 2.K-b8, K-b6. (c) K-d8, Pxb8=B; 2.K-c8, B-c7. Cleverly arranged (Dr.C.G.). Most attractive (D.C.S.). Three different stalemates from very little material (C.J.M., M.H.T., C.A.G.).
 O2081 (B.E.Chamberlain) cS-e2, B-a4; 2.S-b5, B-c2. (b) R-e2, B-e8; 2.S-e6, B-g6. In each solution, WB is unpinned and 4 guards are destroyed (Dr.C.C.L.). Enjoyable play (A.A.). A real beauty (D.C.S.).
 O2082 (C.Jonsson) Q-c5, B-a4; 2.K-d5, K-d1; 3.K-c4, K-c2; 4.B-b5, B-b3. (b) B-d3, B-h5; 2.B-g6, K-e2; 3.Q-e5, K-f3; 4.K-f5, B-g4. Simple and harmonious (P.M.). Nicely constructed (C.C.F.). Beautiful problem (C.A.G.).

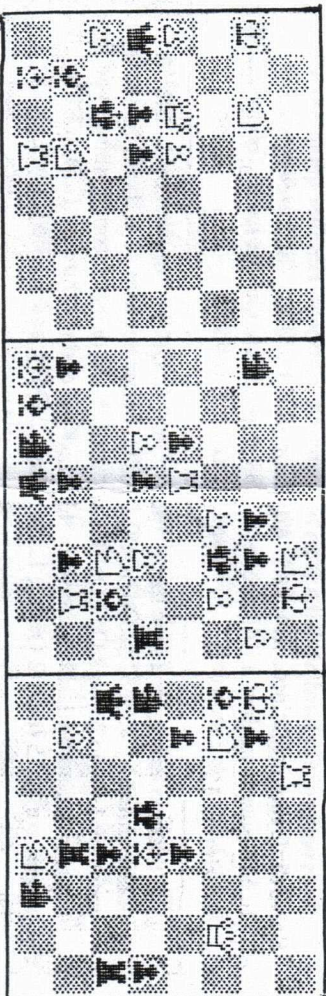
2010 Composing Tournaments. (a) 2 movers published during 2010. (b) 3 or more movers published during 2009-10. (c) Other types published during 2010. Prizes: £7.50, £5 and £2.50 in each group. Judging will be based on solvers' gradings, and if it is necessary to resolve a tie, on strategic analysis. Grades should be on a scale of +2 to -1, with decimals used to make fine distinctions. If a grade for a problem is not given for any reason, solvers are asked to submit a grade with their next set of solutions. Solvers who send grades for all "Problems for Solving" in 2010 will be awarded a full U.K. subscription for or towards their 2012 subscription (half a U.K. subscription if only direct mates or other types solutions are sent). Composers should not grade their own problems: they can still qualify for a free or reduced subscription.

UNSOUND PROBLEMS By K.Cameron

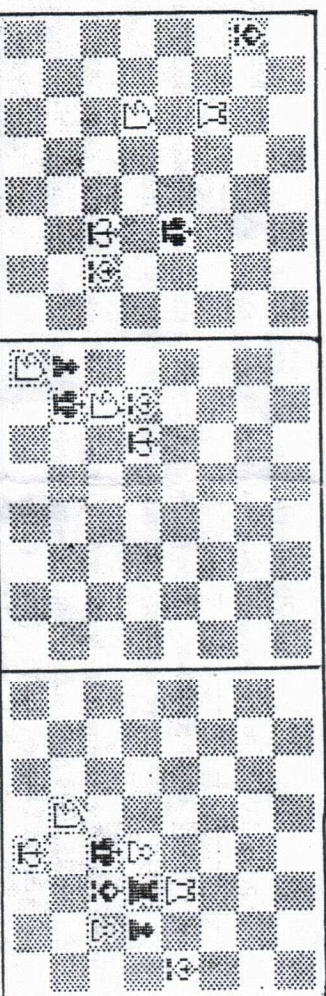
15 Tay Rd, Tielhurst, Reading, Berks., RG30 4DR

There have been five suggested remedies of H.V.Tuxen's 2 mover. H.Schulz's, published in 1971, was 4R3; 2pQ4; 8; 1sb1pS2; 1sP1k1P1; 6B1; 5RP1; 1b1S1BK1. 2. Bh2. However, this has a dual in the variation 1...Bd6 by 2.Rf4 or Pxd6: the BQ in the original prevented 2.Pxd6 by capturing Re8. Walter Diaz sends a fine and unusual setting (1.Sf5) (Diagrams opposite). David Shire's version has some fascinating aspects. 1.cxb5? (Sc3) is crudely dismissed by 1...b1Sf! but 1.Sd4? (Rf4/Qg4) 1...Sxg2! (Bxg2?) is better with 1...Sd3; 2.Re2 nicely augmenting the line-cutting play of the key phase, and the transfer of 2.Re2 also has a certain appeal; 1.Sd4 cuts the line of 2.Bd3 or Qd3 mate. 1.Bh2! (Sg3) adds 1...Rxe8/Sf3+; 2.Qxb7/gxf3 to Tuxen's play. David nearly avoids Schulz's error by placing the BR on b8, also preventing 1.Ra8. Tony Lewis' setting (1.Bh2) uses a BSc7 and WPC6 instead of BQa8 to remove two cooks. If the BBb1 is moved to c2, the pawns on the h-file can be dispensed with because 1.Sd4? is defeated by 1...Bxd1! 1.Sd4? allows the intended ('keyed') threats 2.Qd3 and 2.Bd3 which, if allowed, are defeated by the thematic 1...Be7! John Ling's version (1.Bh2) gives an impeccable setting with h-file pawns as in Tony Lewis' version, but remaining more true to the original Tuxen setting than anyone else's.

V.Onitiiu's 7 mover was an unplaced original in Die Schwalbe, its flaw going unnoticed. The WB forces the BG to g7, followed by the mate 7.Bh7.Intention: Bb1, Gc1; 2.Bc2, Gc3; 3.Bd3, Gc3; 4.Be4, Ge5; 5.Bf5, Gg5; 6.Bg6, Gg7; 7.Bh7. Unfortunately, the problem can be solved in 6 moves: Bb1, Gc1; 2.Kg2, Ga1; 3.Kf1, Gc1; 4.Bg6, Gg1; 5.Ke2, Gg7; 6.Bh7. Can solvers find an elegant remedy which uses exactly the same units as are on the board already? Please send solutions to K.C. (or J.F.L. for forwarding to K.C.) by 14.VII.2010, please



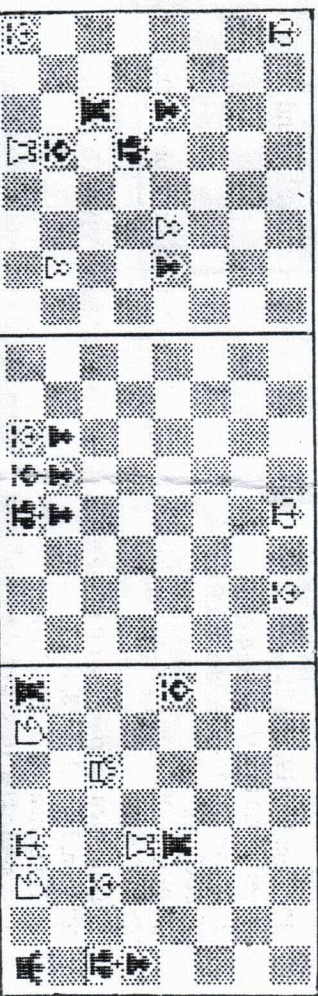
White to play & mate in 2 moves



3 moves

4 moves

Helpmate in 2, 3 sols.



O2089. C.J.A.Jones

O2090. K.Cameron

O2091. A.Willmott, Australia

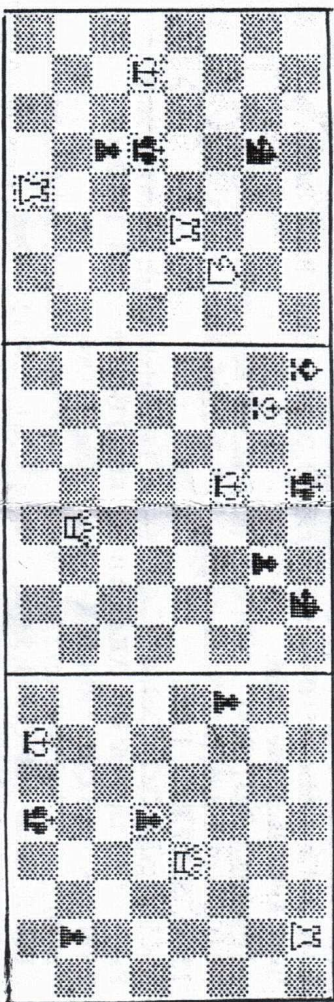
Helpmate in 3, 2 sols.

Serieshelpmate in 7

Seriesselfstalemate in 8

Strategic Analysis. D2083. White elements in the key. Solutions, comments and grades by 14.VII.2010, please.

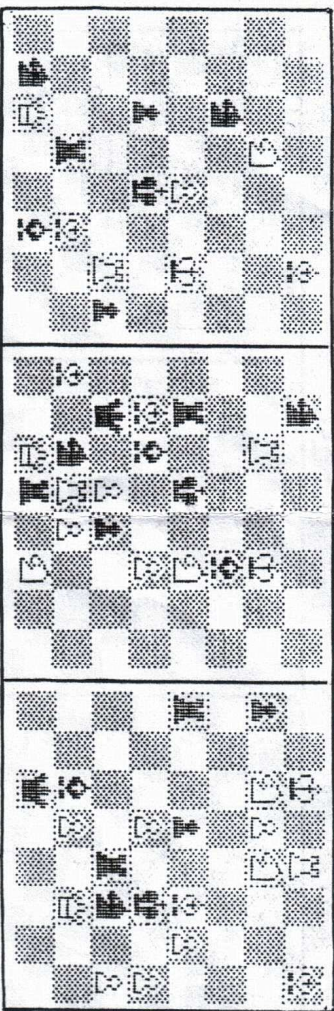
(Solve the 2 movers below, then read the author's commentary 2 pages on).
G.Maleika, Deutsche Schach-zeitung, 1985
3rd H.M., Deutsche Schachzeitung, 1982
G.Maleika, The Problemist, 1989



1st Prize: D.J.Shire

2009 2 MOVE AWARD

2nd Prize: A.C.Reeves 3rd Prize: V.Agostini & S.Mariani, Italy



1st Prize: D2019, D.J.Shire. (R-d3). Delightful problem – spectacular key and very nice variations (M.Thornton).
2nd Prize: D2046, A.C.Reeves. (1S-g3). Wonderfully rich play (Dom C.Stockford).
3rd Prize: D2055, V.Agostini & S.Mariani. Italy. (B-e4). Splendid play on e4 (Dom C.Stockford).

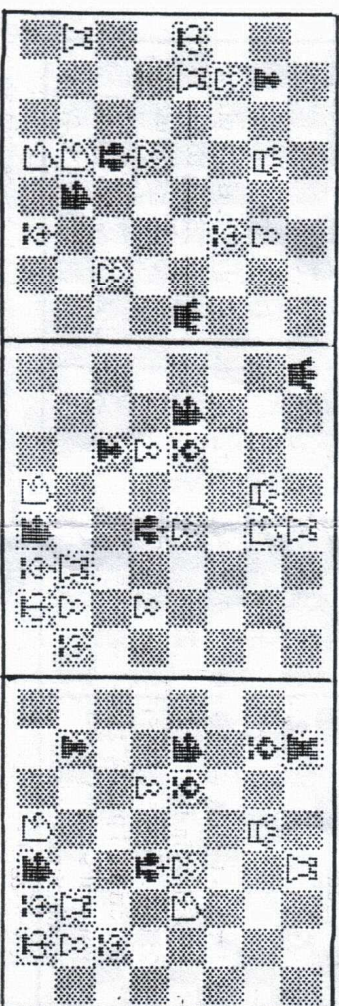
1st Hon. Men.: D2045, A.Armeni, Italy.
2nd Hon. Men.: D2028, R.T.Lewis.
3rd Hon. Men.: D2054, E.Petite, Spain.
1st Comm.: D2036, C.J.Morse.
2nd Comm.: D2053, D.M.Howard.
3rd Comm.: D2027, A.Willmott, Australia.
Congratulations to the successful composers. The award will remain open until the Sept. issue.

WINTON CAPITAL BRITISH CHESS SOLVING CHAMPIONSHIP

The first position below is the starter problem. Competitors, who must be British residents, should either send the key and a cheque or postal order for £3 (made payable to British Chess Problem Society) by post to Paul Valois, 14 Newton Park Drive, Leeds, LS7 4HH, postmarked no later than 31.VIII.10, providing an email address if they have one, or enter via the website <http://www.bstephen.me.uk/wcbccstarter>, with payment by PayPal. Please also include the name of this magazine. After the closing date all competitors will receive the answer to the starter problem, and those who get it right, the postal round containing 8 more difficult and varied problems. All competitors, whether successful or not, who are not members of the BCPS will each receive a recent copy of "The Problemist", its magazine. Eventually, the best competitors from the postal round will be invited to the final (in Feb. 2011 at Oakham School) at which the prize fund will be about £1000. The ultimate winner of this final will win the right to represent Great Britain at the World Chess Solving Championship in 2011. The website of the Controller, Brian Stephenson, is <http://www.bstephen.me.uk>.

WCBCSC Starter, 2010-2011 H.V.Tuxen, v.W.Diaz

v.D.J.Shire



White to play & mate in 2

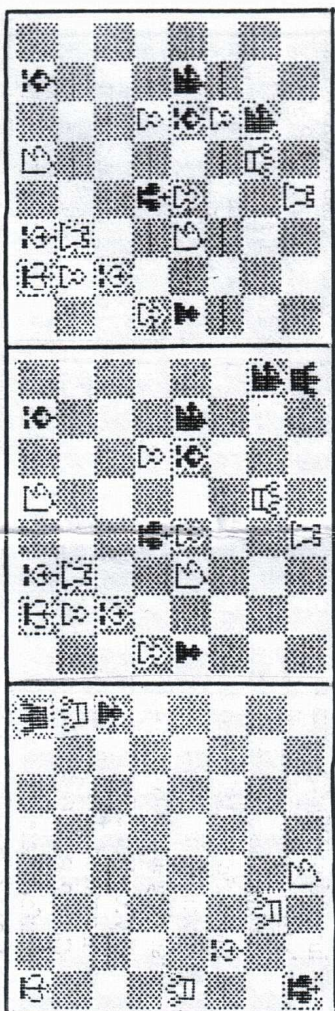
2 moves

2 moves

v.R.T.Lewis

v.J.F.L.

V.Onituu, Die Schwalbe, Jan. 1930



2 moves

2 moves

7 moves

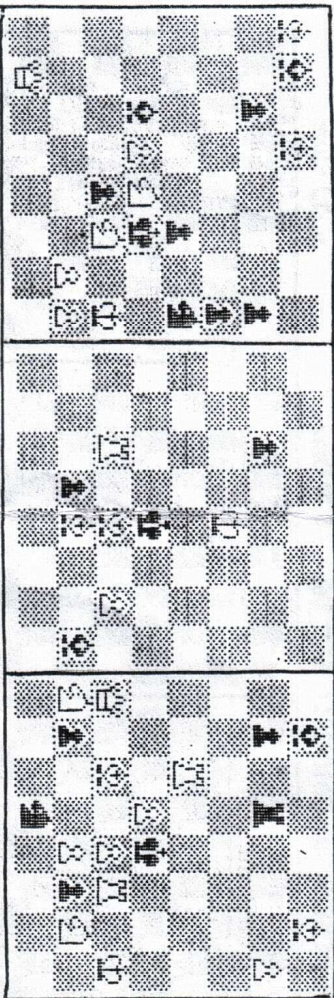
SPOTLIGHT ON CHESS PROBLEMISTS By D.M.Howard
 The Feie, W. Harptree Rd., East Harptree, Bristol BS40 6BQ

13. R.A.Lincoln

Bob Lincoln, author of the excellent series of articles "Miniatures for Profit", was born in New Jersey in 1937, and has lived in that state for most of his life, working with computers for both Bell Atlantic and Dendrite Inc. Now retired, he and his wife Carol live close to the shore. They have a son Jeff, who also works with computers, and whose wife is a Presbyterian minister. They live further north than Bob, and have two daughters.

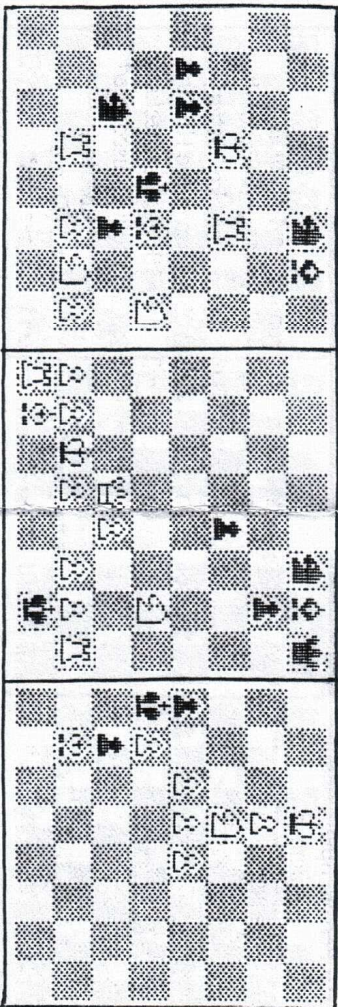
Bob's principal chess problem interest is direct mates, particularly miniatures, a liking he shares with other contributors to Problem Observer. His considerable skill as a composer is well illustrated by his miniature in last July's "Miniatures for Profit". This has a quiet key, and a delightful pin-mate.

R.A.Lincoln, U.S.P.B., 1988 2nd Comm., Chess Life, 1986 2nd Pr., StrateGems JT, 2008



All 2 moves

J.Buchwald, H.M., American Chess Bulletin, 1950 M.Vukcevic, 1st Pr., StrateGems, 1998 M.Prcic, 1st Pr., StrateGems, 2001

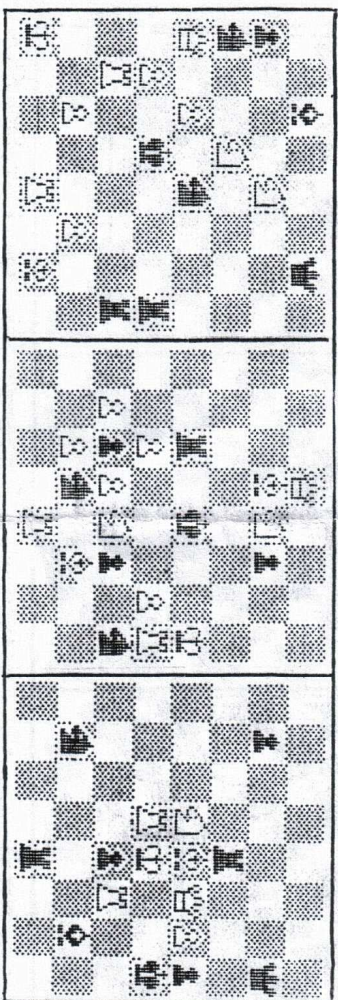


All 3 moves

Solutions. R.A.L. (1) Sg3? (Sxh5, Qxf5) 1...Sg7! Qe1? (Qh4) 1...Pxe4! Sf6? (Sxh5) 1...Bf7! Sc5? 1...cBnw; 2.cSe6. 1...cBSw; 2.Sd3. 1...Bd5! Sc3? 1...cBNw; 2.Sd5: 1...cBSw; 2.Se2: 1...Bd3! 1.fSg5! 1...cBNw/cBSw/Ba7/Pc6/Pxg5/Pxe4/S-! Sg3/P-e2: 2.gSe6/Qf1/Bxc7/Qxh8/Bxg5/Qxe4/Pg3/Pxg3/Qc1. (2) Bxd2? (Rc4) 1...Bg1! Bf2? (Rc4, Bf3) 1...Pd1=Q! Ba7? (Rc4, Bf3, Re3) 1...Pc5! 1.Bc5! (Rc4, Bf3, Re3) 1...Pc6/Pd1=S/Pd1=R/Pd1=B/Bxg3/Bg1/Pd1=Q: 2.Rc4, Bf3, Re3/Rc4, Bf3, Bf3, Re3/Rc4, Re3/Rc4, Bf3/Re3. (3) Qd4? (Qc2, d5) 1...Pb1=Q! Qb3? (Qc2) 1...Rxd4! 1.Qh4! (Pd5) 1...Pb1=Q/Rxd4/Rxh7ch/Rd5/Be5/Bf4/Sxc3/Sxe3/Pe5; 2.Qxb1/Qxd4/Bxh7/Bxd5/Rxe5/Rxf4/Sxc3/Rxe3/Rd6. J.Buchwald. Bg3? (Rf4) 1...Sd5! Be3? (Rf4) 1...Se2! Be5? (Rf4) 1...Se6! Bg5? (Rf4) 1...Sg6. 1.Bh6! (Rf4) 1...Se6/Sg6/Sd5/Se2; 2.Rf5. 3.Re5/2.Sxf3. 3.Sg5/2.Sf5. 3.Sg3/2.Rxf3. 3.Re3. M.Vukcevic. Qe2? (Qe1, d1) 1...Qxh2! 1.Qh7! (2.Rh1ch, Kxg2; 3.Qe4) 1...Sxh7/Bxh7ch/Qxh7ch/Pg6/Kf1; 2.Kd3. 3.Bc2/2.Kb3. 3.Bc2 etc./2.Kc3. 3.Bc2 etc./2.Rh1ch, Kxg2; 3.Qb7/2.Rh1ch, Ke2; 3.Qd3: Kxg2; 3.Qe4. M.Prcic. Kc8? 1...Pxb4! Ke7? 1...Kxb4! Kc7? 1...Kxb4! 1.Ke8! 1...Pxb4/Kxb4; 2.Pd8=R; 3.Ra8/Pd8=Q, Pa4; 3.Qb6: 2...Ka4; 3.Qh4: 2...Kxc5; 3.Qxa5.

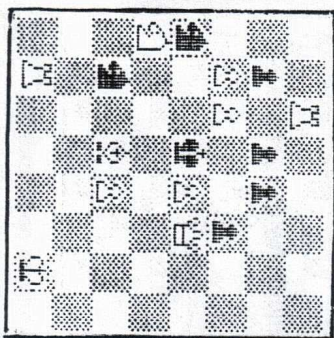
2 MOVE TASKS

A:F.A.Sonnenfeld, Campeonato B.K.H.Hannemann, Svenska Dagbladet, 1925 C:E.Ferrón, Spain, after G.Heathcote



2 P-c6 P-d4ch Two

D:E.Ferrón, Spain, after F.Gamag



Two

A welcome letter from E.Ferron brings 4 problems, including 2 which are relevant to my "The Power of the Pieces". No.81, BS Wheel 0-1 without masked battery was replaced by a version with 23 pieces in the Nov.06 issue: (A) shows the task with only 19 pieces. Checks by Black on p 11 of my book do not include discovered checks by the BK: (B) is an example (C.J.Morse, "Tasks and Records", No.369). (C) and (D) are unpublished, and are recommended to readers' attention: correct solutions are eligible for extra ladder points, and comments would be appreciated.