

SELECCIÓN DE PROBLEMAS DE NADEZHDA LEONTIEVA

Selección de problemas



NADEZHDA LEONTIEVA

Pedro Cañizares

Corral de Calatrava

15/12/2021

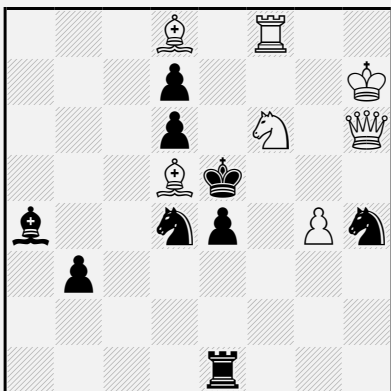
SELECCIÓN DE PROBLEMAS DE NADEZHDA LEONTIEVA

Raphaël KOFMAN

Nadezhda A. LEONTIEVA

Jubilé A. Kozlov-80, 64 1978-79

1° Prix



♯3

(7+9) C+

1.Aa5! [2.Té8+ Cé6 3.Aç3‡]

1...Cd~ 2.Aç3+ Cd4 3.Té8‡

1...Cé2 2.Dé3 [3.D×é4‡] Cé~/Cd4/Cf4

3.Aç3/Dg3/Dç3,Aç3‡

1...Cb5 2.Dd2 [3.C×d7‡] Cb~/Cd4

3.Aç3/Dh2‡

1...Chf5 2.Dh2+ Cg3 3.D×g3‡

1...Cg6 2.Dg5+ Cf5 3.Aç3‡

1...Chf3 2.Aç3 [3.Té8‡] Cg5+ 3.D×g5‡

1...Td1,Tç1,Té3 2.D(×)é3

[3.Dg3,D×é4‡]

Correction noire

Fermeture de ligne noire par les Noirs

Echange des 2° et 3° coups blancs

Mat par clouage

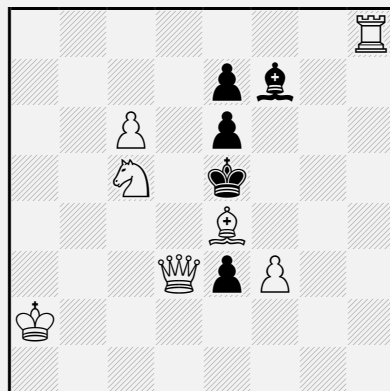
Auto-clouage direct

Raphaël KOFMAN

Nadezhda A. LEONTIEVA

Magyar Sakkélet 1976

Recommandé



♯3

(7+5) C+

1.Db5! [2.Cd3+,Cd7+]

1...Rd6 2.Cb7+ Rç7 3.Da5‡

1...Rf4 2.Cd3+ Rg3 3.Dg5‡

1...Rd4 2.Cb3+ Rç3 3.Dç5‡

1...Rf6 2.Cd7+ Rg7 3.Dé5‡

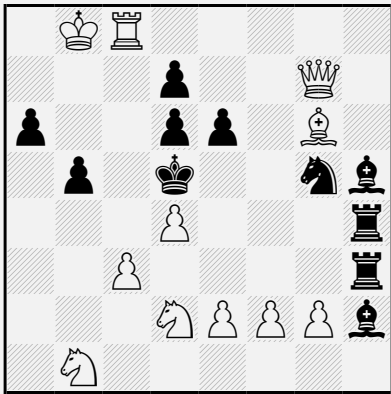
Etoile de Roi

Batterie blanche

Duel Noir-Blanc

SELECCIÓN DE PROBLEMAS DE NADEZHDA LEONTIEVA

Talip AMIROV
Nadezhda A. LEONTIEVA
Shakhmaty v SSSR 1974



#3 (11+11) C+

1.g4? [2.Aç2,é4+]

mais 1...A×g6!

1.g3? [2.ç4+,Tç5+]

mais 1...Cé4!

1.f3? [2.Aç2,ç4+]

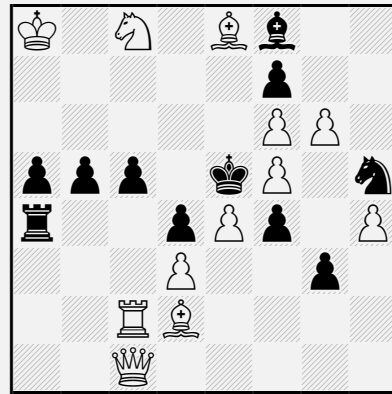
mais 1...Aé5!

1.f4! [2.é4+,Tç5+]

Tuyaux d'orgue

Novotny

Nadezhda A. LEONTIEVA
Novi Temi 1976-77
1° Prix



#4 (12+11) C+

1.g7! [2.g×f8=D,g8=D]

1...C×g7 2.A×f4+ R×f6 3.Ag5+ Ré5

4.Df4‡

1...A×g7 2.T×ç5+ R×f6 3.Tç6+ Ré5

4.Dç5‡

Switchback noir

Switchback de Roi

Bristol

Captures réciproques

Promotion

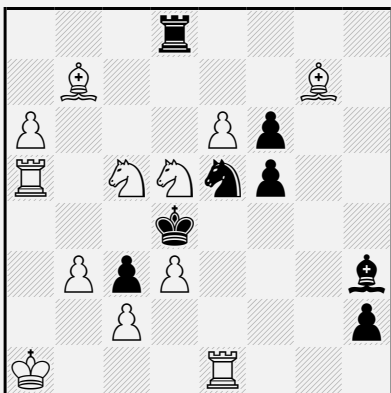
SELECCIÓN DE PROBLEMAS DE NADEZHDA LEONTIEVA

Raphaël KOFMAN

Nadezhda A. LEONTIEVA

U.R.S.S. - Yougoslavie 1976-77

2° Place



♠3 (12+8) C+

1.Cé4! [2.Ta4+ Cç4 3.A×f6‡]

1...C~ 2.A×f6+ Cé5 3.Ta4‡

1...Cd7 2.Cç7 [3.Td5‡] C~/Cé5

3.A×f6/Cb5‡

1...Cg4 2.Cg3 [3.C×f5‡] C~/Cé5/T×d5

3.A×f6/Cé2/T×d5‡

1...Tç8,Tf8 2.Cç7 [3.Cb5,Td5‡]

Correction noire

Fermeture de ligne noire par les Noirs

Echange des 2° et 3° coups blancs

Switchback noir

Switchback de Cavalier

Somov B2

Auto-blocage

Mat par clouage

Auto-clouage direct

Auto-clouage indirect

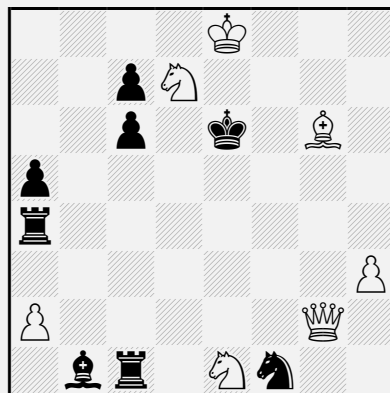
Auto-déclouage indirect

Mat (suite) changé(e) au moins 2 fois

Nadezhda A. LEONTIEVA

4° Championnat d'Ukraine 1975

2° Place



♠4 (7+8) C+

1.Aç2! [2.D×ç6‡]

1...A×ç2 2.D×ç6+ Rf5 3.Df6+ Ré4

4.Dé5‡

1...T×ç2 2.Dg6+ Rd5 3.Df5+

Rç4/Rd4/Rd6 4.Dç5/Dd3/Dé5‡

(1...Td1,Tç4,Rd6 2.Dg6+ Rd5

3.Df5+,Dg5+,Dh5+)

Novotny

Bristol

Echo diagonal-orthogonal

Quasi-sacrifice blanc

Mats modèles

Echo caméléon

Echo(0,1)

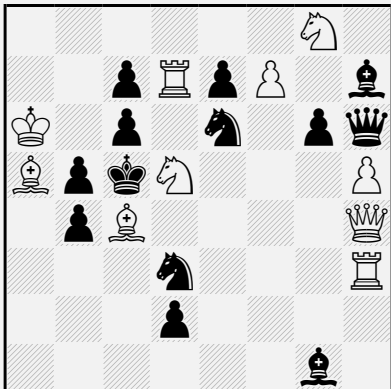
Echo miroir horizontal

Echo à 180°

SELECCIÓN DE PROBLEMAS DE NADEZHDA LEONTIEVA

Nadezhda A. LEONTIEVA

Problemland 1970



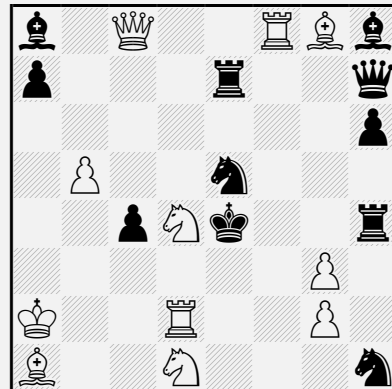
♯3 (10+13) C+

- 1.Ab3!** [2.Axb4+ Cxb4+ 3.Dxb4♯]
 1...Cé7 2.Cxc7 [3.Dxe7,Ab6♯] Cd5
 3.Cé6♯
 1...Cdf4 2.Cxb4 [3.Tc3,Dxe7♯] Cd5
 3.Cd3♯
 1...Df4 2.Cxf4 [3.Dxe7,Cxe6,Cxd3♯]
 1...çxd5 2.Txd5+ Rç6 3.Cxe7♯

Défenses sur la même case

Nadezhda A. LEONTIEVA

Sinfonie Scacchistiche 1970



♯2 (11+11) C+

- 1.Cç2!** [2.Cç3,Td4♯]
 1...Cd7 2.Dxa8♯
 1...Cg6 2.Df5♯
 1...Cç6 2.Ad5♯
 1...Cg4 2.Tf4♯
 1...Cd3 2.Té2♯
 1...Cf7 2.Axh7♯
 1...Cf3 2.gxf3♯

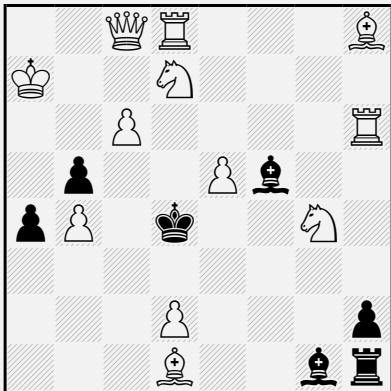
Mats miroir

Fermeture de ligne noire par les Noirs

Anti-Somov A2

SELECCIÓN DE PROBLEMAS DE NADEZHDA LEONTIEVA

Nadezhda A. LEONTIEVA
Problemista 1969

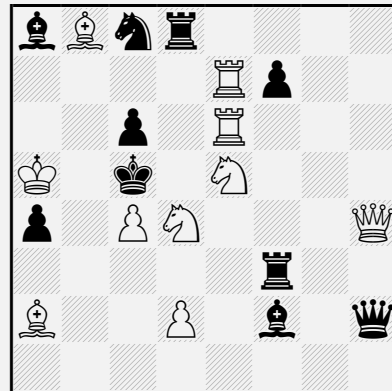


#3 (12+7) C+

1.Th4! [2.Cé3+,Cf2+,Cb6+,Cç5+]

Pseudo-Fleck

Nadezhda A. LEONTIEVA
diagrammes 1980



#3 (10+10) C+

1.Td7! [2.Dé7+,Cd×f3,Aa7+]

1...D×h4 2.Cd3+ T×d3 3.Té5‡

1...A×h4 2.Cb3+ T×b3,a×b3 3.d4‡

1...f6 2.T×ç6+ A×ç6 3.Cé6‡

1...Té8 2.Td5+ ç×d5 3.Cd7‡

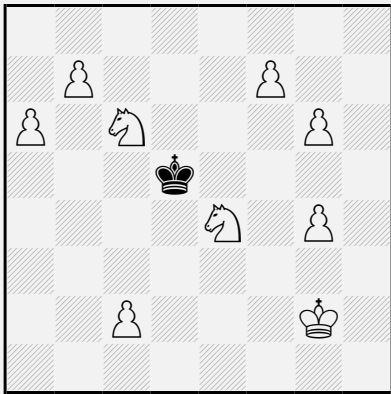
Sacrifice blanc

P... Cañizores

SELECCIÓN DE PROBLEMAS DE NADEZHDA LEONTIEVA

Nadezhda A. LEONTIEVA

Hlas l'udu 1970



#2 (9+1) C+

b) ♖g4→é6

a)

1.b8=D! blocus

1...R×ç6 2.Db7‡

1...R×é4 2.Dé5‡

1...Rç4 2.Db3‡

1...Ré6 2.Dd6‡

b)

1.f8=D! blocus

1...R×ç6 2.Dç5‡

1...R×é4 2.Df3‡

1...Rç4 2.Dç5‡

1...R×é6 2.Df7‡

Switchback

Etoile de Roi

Clé de promotion

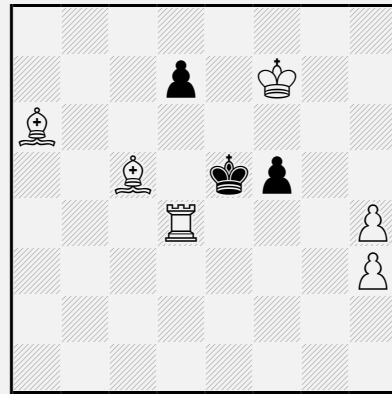
Mats (suites) changé(e)s

Duel Noir-Blanc

Nadezhda A. LEONTIEVA

Radyanska zhinka 1982

1° Prix



#4 (6+3) C+

1.Ab7! [2.T×d7 [3.Té7+ Rf4 4.Ad6‡]

Rf4 3.Td3 [4.Ad6‡]]

1...d5 2.A×d5 f4 3.Af3 Rf5 4.Td5‡

1...d6 2.T×d6 Rf4 3.Td3 Ré5 4.Ad6‡

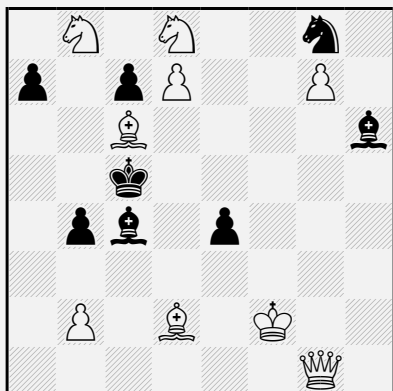
(2...f4 3.Té6+,Af3)

SELECCIÓN DE PROBLEMAS DE NADEZHDA LEONTIEVA

Nadezhda A. LEONTIEVA

Mémorial L. Loshinsky, 64 1981-82

Recommandé



♠4 (9+8) C+

1.Dé1! [2.D×é4,Cb7+]

1...Aé3+ 2.D×é3+ Rd6 3.Df4+ Rç5/Ré7

4.Aé3/Df8‡

1...é3+ 2.A×é3+ Rd6 3.Af4+ A×f4/Rç5

4.Cb7/Dé3‡

2...A×é3+ 3.D×é3+ Rd6 4.Cb7‡

1...A~ 2.A×b4+ Rb6 3.Aa5+ Rç5

4.Db4‡

(1...Rb6 2.Dé3+,A×h6,Aé3+)

Echange des 2° et 4° coups blancs

Switchback

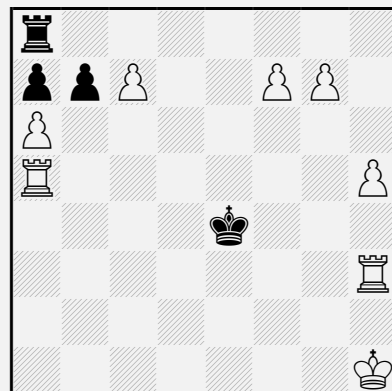
Echecs croisés

Echange de place (cyclique) de pièces blanches entre les positions finales

Nadezhda A. LEONTIEVA

Jubilé A. Grin-75, 64 1983

3° Prix



♠3 (8+4) C+

1.a×b7! [2.b×a8=D+ Rd4/Rf4

3.Dd5/Df3‡]

1...Th8 2.g×h8=D [3.Dé5‡] Rf4 3.Dd4‡

1...Tg8 2.f×g8=D [3.Dç4‡] Rd4 3.Dd5‡

1...Tf8 2.g×f8=D [3.Db4‡]

1...Té8 2.f×é8=D+ Rd4,Rf4 3.Da4‡

1...Td8 2.ç×d8=D [3.Dh4‡]

1...Tç8 2.b×ç8=D [3.Dg4‡] Rf4 3.Df5‡

1...Tb8 2.ç×b8=D [3.Dé5‡] Rd4 3.Df4‡

Mats modèles

Mats miroir

Echo caméléon

Echo(0,0)

Echo(0,1)

Echo(0,2)

Echo miroir horizontal

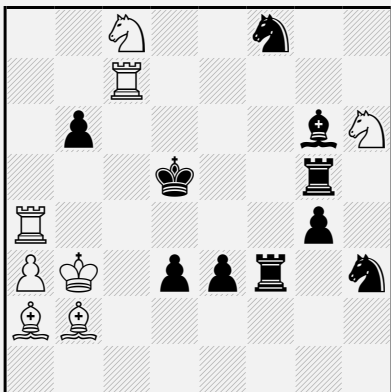
Echo miroir vertical

Echo à 180°

Promotion

SELECCIÓN DE PROBLEMAS DE NADEZHDA LEONTIEVA

Nadezhda A. LEONTIEVA Shakhmaty v SSSR 1964



♯3 (8+10) C+

1.Cf5! [2.Cçé7+ Ré6 3.Rb4‡]
 1...Tg×f5,Tf×f5 2.Rçç3+ Ré5 3.R×d3‡
 1...A×f5 2.Rb4+ Ré4 3.Rb5‡
 1...Tf4 2.C×é3+ Ré6 3.Té7‡
 1...Ré6 2.Té4+ R×f5/Rd5 3.Cd6/Té5‡
 (1...Cf4 2.Rb4+ Ré4 3.Cfd6,Cçd6‡)

Novotny

Switchback

Auto-blocage préventif

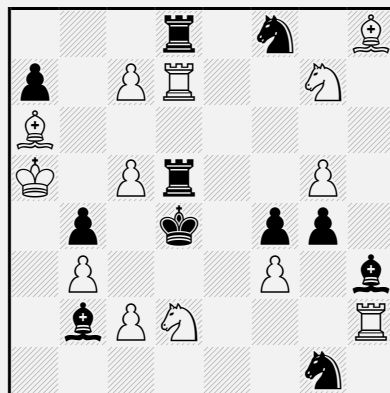
Batterie royale

Batterie blanche

Clé de sacrifice

Captures multiples d'une pièce blanche

Nadezhda A. LEONTIEVA Shakhmaty v SSSR 1969 2° Prix



♯3 (13+11) C+

1.Ab7! [2.Cf5+ R×ç5 3.Cé4‡]
 1...Rçç3 2.Cé4+ Rd4 3.Cf5‡
 1...Ré3 2.Cf5+ T×f5 3.Cç4‡
 1...Ré5 2.Cç4+ Rd4 3.Cé6‡
 1...R×ç5 2.Cé6+ C×é6 3.Cé4‡

Etoile de Roi

Cycle des 2° et 3° coups blancs

Echange des 2° et 3° coups blancs

Switchback

Echec double

Batterie blanche

Auto-clouage indirect

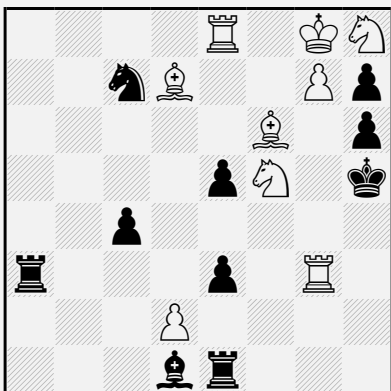
Auto-déclouage indirect

SELECCIÓN DE PROBLEMAS DE NADEZHDA LEONTIEVA

Zuleikha E. EIVAZOVA
Nadezhda A. LEONTIEVA

64 1981

Recommandé



♯3 (9+10) C+

1.C×é3! [2.Th3,T×é5‡]

1...Té×é3 2.Th3+ T×h3 3.T×é5‡

1...Ta×é3 2.T×é5+ T×é5 3.Th3‡

Zilahi

Echange des 2° et 3° coups blancs

Bristol bicolore

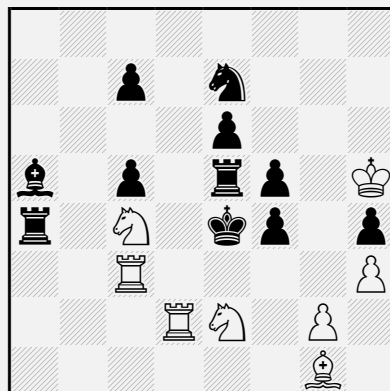
Keller (paradoxe)

Clé de sacrifice

Nadezhda A. LEONTIEVA
Raphaël KOFMAN

Revista de Sah 1973

1° Mention d'Honneur



♯3 (8+11) C+

1.Rg5! blocus

1...Ab4,Ta~ 2.Cd6+ ç×d6 3.Tç4‡

1...Tb4,Ab6 2.Té3+ f×é3 3.Cç3‡

1...C~ 2.C×f4 [3.Té2,Té3‡]

1...Cd5 2.Td4+ ç×d4 3.Cd2‡

1...Td5 2.Cg3+ h×g3/f×g3

3.Té2/Té2,Té3‡

Grimshaw

Correction noire

Zilahi cyclique à 4 chaînons

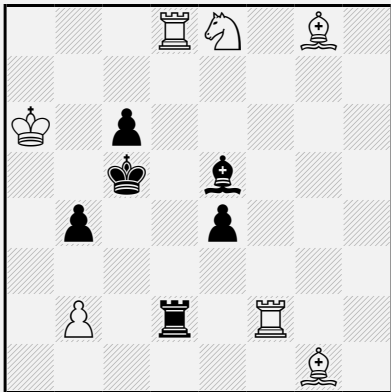
Auto-blocage

Sacrifice blanc

SELECCIÓN DE PROBLEMAS DE NADEZHDA LEONTIEVA

Nadezhda A. LEONTIEVA

? 1967



#2

(7+6) C+

1.Td4! [2.Tç4‡]

1...A×d4 2.Tf5‡

1...T×d4,Tç2 2.T(×)ç2‡

1...R×d4 2.T×d2‡

Novotny

Boros

Echec double

Batterie blanche

Captures multiples d'une pièce blanche

Mat par clouage

Clouage indirect

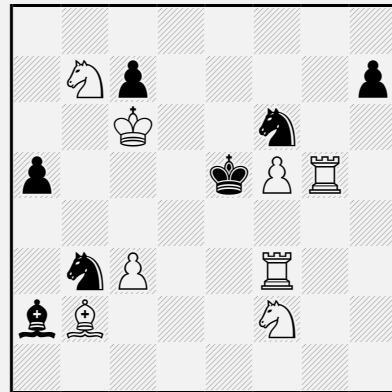
Défenses sur la même case

Clé ampliative

Nadezhda A. LEONTIEVA

Anatole F. IANOVIC

Revista Româna de Sah 1979



#2

(8+7) C+

1.Cç5? [2.Cfd3,Cçd3‡]

mais 1...Ab1!

1.Cd8! [2.Cf7‡]

1...Cf~ 2.f6‡

1...Cé4! 2.Cg4‡

1...Cb~ 2.ç4‡

1...Cd4+! 2.ç×d4‡

Umnov

Batterie blanche

Correction noire

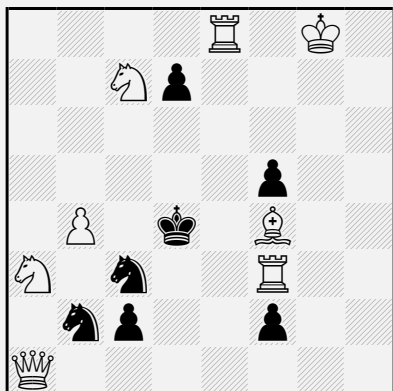
SELECCIÓN DE PROBLEMAS DE NADEZHDA LEONTIEVA

Nadezhda A. LEONTIEVA

Concours féminin international,

64 1983-84 (v)

1° Prix



♯2

(8+7) C+

1.Dh1! [2.Dh8♯]

1...Cé4 2.Aé5♯

1...Cd5 2.Cçb5♯

1...Cd3 2.Aé3♯

1...Cç4 2.C×ç2♯

Somov B2

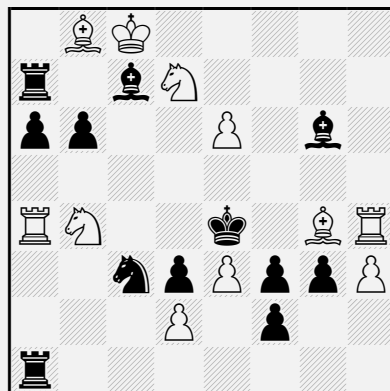
Auto-blocage

Horseblock

Nadezhda A. LEONTIEVA

Zvaizgne 1970

Prix spécial



♯3

(11+12) C+

1.é7! [2.Aé6+ Af4 3.T×f4,Cf6♯]

1...Ah5 2.T×h5 [3.Af5,Cf6♯]

1...Af5 2.Ah5+ Ag4/Af4 3.Ag6/T×f4♯

1...Cd5 2.Ca2+ Cb4 3.Cç3♯

Echange de place (cyclique) de pièces blanches et noires

Echange de place (cyclique) de pièces blanches et noires entre les positions finales

Umnov différé

Batterie blanche

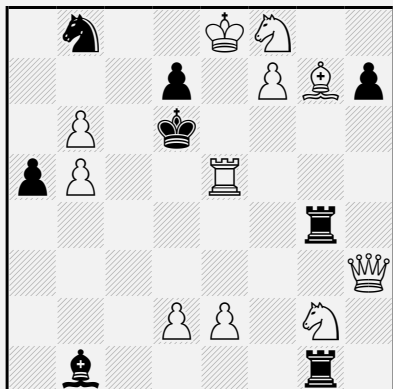
Mat par clouage

Auto-clouage direct

SELECCIÓN DE PROBLEMAS DE NADEZHDA LEONTIEVA

Nadezhda A. LEONTIEVA

Problemas 1973



♯2 (11+8) C+

1...Té4 2.Dh6‡

1...Aé4,Tg5 2.Da3‡

1.Cé3? [2.Td5‡]

1...Té4 2.Cf5‡

1...Aé4,Tg5 2.Cç4‡

mais 1...Td4!

1.é4! [2.Da3,Td5‡] T×é4 2.Dh6‡

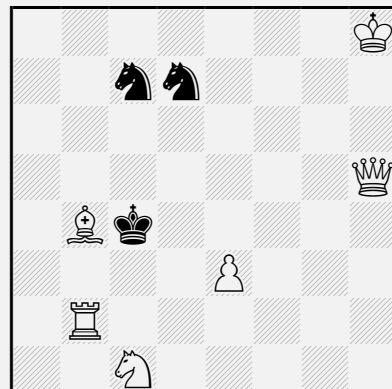
Mats (suites) changé(e)s

Grimshaw

Novotny

Nadezhda A. LEONTIEVA

Zpravodaj Kotva 1967



♯2 (6+3) C+

1...Cd5 2.Dé2‡

1...Cb5 2.Df7‡

1.Da5! [2.Tç2‡]

1...Cd5 2.Da6‡

1...Cb5 2.Da2‡

1...Cç5 2.D×ç5‡

Auto-blocage

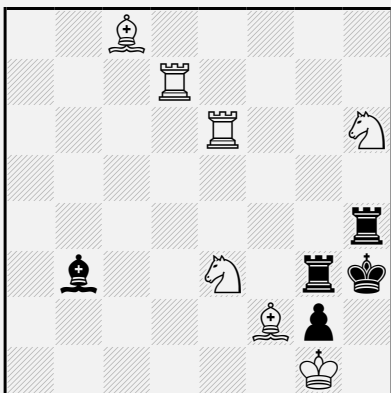
Mats (suites) changé(e)s

SELECCIÓN DE PROBLEMAS DE NADEZHDA LEONTIEVA

Nadezhda A. LEONTIEVA

Probleemblad 1969

4° Recommandé



#3 (7+5) C+

1.Tg6! [2.T×g3‡]

1...Tf4 2.Th7+ Aé6/Tfg4,Tgg4/Tf5/Rh4

3.Chg4/Cg8,Cf7,Ch×g4/Cg8,Ch×f5,Cf7/Cg8,Chf5,Cf7,Chg4‡

1...Thg4 2.Th7 [3.Cg8,Cf7,Ch×g4‡]

1...T×g6,Tg5 2.Td3+

Aé6/Thg4,Té6,Tgg4 3.Cég4/Cé~‡

1...Tgg4 2.Td3 [3.Cé~‡]

(1...Ta4,Tb4,Tç4,Td4/Té4/Th5/T×é3/Tf3

2.Th7+,T(×)d4+,Td5+/Th7+,Td5+/T×g3+,Td4+/Td3+,Td4+,Td5+/Tf7+,Td4+,Td5+)

Zabunov

Demi-batterie blanche

Batterie masquée

Batterie blanche

Quasi-sacrifice blanc

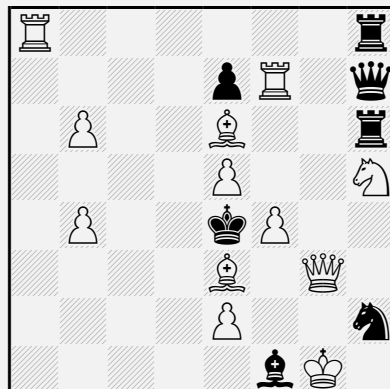
Captures réciproques

Auto-clouage direct

Déclouage indirect

Nadezhda A. LEONTIEVA

Probleemblad 1972



#3 (12+7) C+

1.Ac5! [2.Dd3,Dé3‡]

1...Tg6,Dg6 2.Ta3 [3.Té3‡]

T×é6,D×é6/T×g3+,D×g3+/Cf3+/Cg4

3.Dd3/C×g3/é×f3/Dd3,Df3‡

1...Dg8 2.Td8 [3.Af5,Ad5,Td4‡]

D×d8/D×g3+/Cf3+ 3.Dé3/C×g3/é×f3‡

1...Tg8 2.Td8 [3.Ad5,Td4‡]

T×d8/T×g3+/Cf3+ 3.Dé3/C×g3/é×f3‡

(1...Dg7 2.C×g7,T×g7)

2° coups noirs sur la même case

Keller (paradoxe)

Echecs croisés

Pseudo-sacrifice blanc

Captures multiples d'une pièce blanche

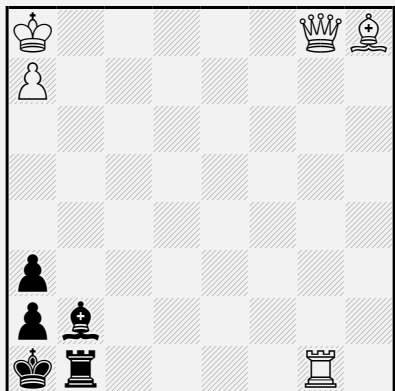
Clouage direct

Déclouage direct

SELECCIÓN DE PROBLEMAS DE NADEZHDA LEONTIEVA

Nadezhda A. LEONTIEVA

Gazeta Czestochowska 1974



♯2

(5+5) C+

1...A×h8 2.D×h8‡

1...Af6 2.A×f6‡

1...Aé5 2.A×é5‡

1...Ad4 2.A×d4‡

1...Aç3 2.A×ç3‡

1.Dg7! blocus

1...A×g7 2.A×g7‡

1...Af6 2.D×f6‡

1...Aé5 2.D×é5‡

1...Ad4 2.D×d4‡

1...Aç3 2.D×ç3‡

1...T×g1 2.D×g1‡

1...Tf1 2.T×f1‡

1...Té1 2.T×é1‡

1...Td1 2.T×d1‡

1...Tç1 2.T×ç1‡

Mutate

Changement de pièce clouante

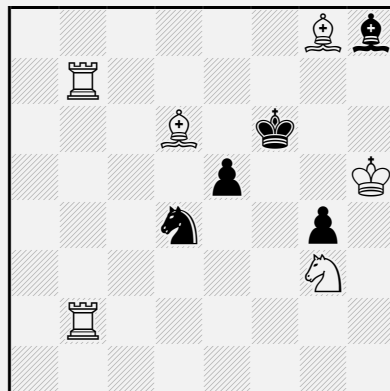
Capture d'une pièce clouante par la pièce clouée

Mats modèles

Mats (suites) changé(e)s

Nadezhda A. LEONTIEVA

Probleemblad 1968



♯2

(6+5) C+

1.Aç5! blocus

1...Ag7 2.Aé7‡

1...é4 2.A×d4‡

1...Cç6,Cb3,Cb5 2.Tf2‡

1...Cé2,Cf3,Cç2 2.T2b6‡

1...Cf5 2.Cé4‡

1...Cé6 2.Tf7‡

Correction noire

Anti-dual

Somov B2

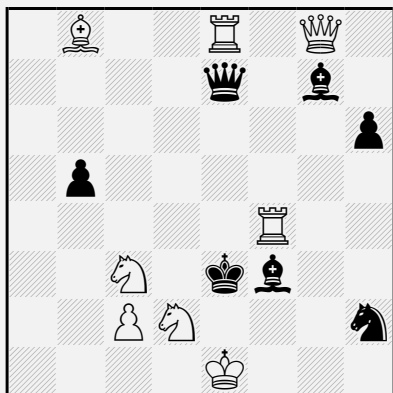
Auto-blocage

SELECCIÓN DE PROBLEMAS DE NADEZHDA LEONTIEVA

Nadezhda A. LEONTIEVA

Problemista 1968

Recommandé



#2

(8+7) C+

1.Dç4? [2.Dd3†]
1...b×ç4 2.C×ç4†
mais 1...Aé5!

1.Tb4! [2.Af4†]

1...Dé5 2.Aa7†
1...Aé5,Ad4 2.Dg1†
1...Dé4 2.Cd5†
1...Aé4 2.Cd1†

Holzhausen

Mouvement Pelle

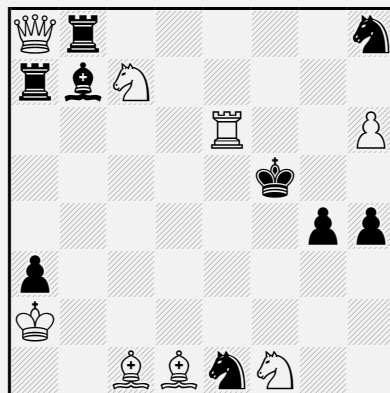
Mat par clouage

Auto-déclouage indirect

Nadezhda A. LEONTIEVA

Freie Presse 1974

2° Recommandé



#3

(8+9) C+

1.Ch2! [2.A×g4†]
1...Ta4 2.Da5+ T×a5/Ad5+
3.A×g4/D×d5†
1...Tg8 2.Df8+ T×f8/Cf7 3.A×g4/D×f7†
1...Af3 2.Dé4+ A×é4 3.A×g4†
1...Cf3 2.Aç2+ Aé4 3.A×é4,D×é4†

Loshinsky

Bristol bicolore

Echecs croisés

Pseudo-sacrifice blanc

Captures réciproques

Echo

Echo(0,0)

Echo miroir diagonal

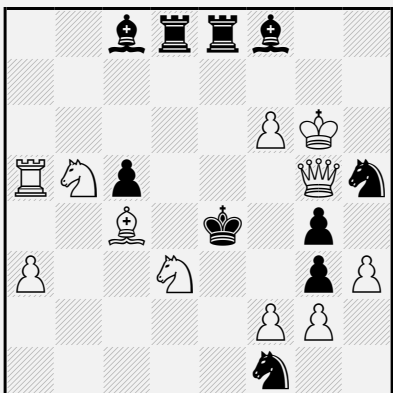
Auto-clouage direct

SELECCIÓN DE PROBLEMAS DE NADEZHDA LEONTIEVA

Nadezhda A. LEONTIEVA

? 1966

Prix spécial



#2

(11+10) C+

1.Ta4! blocus

1...Af5+ ,Aa6,Ab7,Td7,Té6 2.D(×)f5‡

1...Aé6,Aé7,Té5 2.D(×)é5‡

1...Ad7,Ad6,Td5 2.D(×)d5‡

1...Ah6,Ag7,Td6,Té7 2.C×ç5‡

1...Cf~ 2.Dé3‡

1...Ch~ 2.Df4‡

1...T×d3 2.Ad5‡

1...Td4 2.Cç3‡

1...g×f2 2.C×f2‡

1...g×h3 2.f3‡

Echecs croisés

Auto-blocage

Echec double

Batterie blanche

Mats miroir

Clouage direct

Duel Noir-Blanc

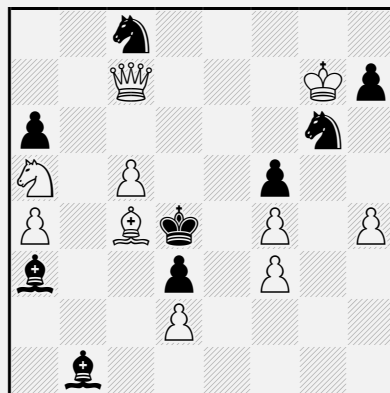
Tuyaux d'orgue

Grimshaw

Nadezhda A. LEONTIEVA

Buletin Problemistic 1976

4° Mention d'Honneur



#3

(10+9) C+

1.h5! [2.h×g6 [3.Dé5‡] Cd6 3.D×d6‡]

1...C×f4 2.Dé5+ R×é5 3.Cç6‡

1...Cb6,Cçé7 2.Dd6+ Cd5 3.D×d5‡

1...Ab4 2.Cb3+ R×ç4 3.Df7‡

1...A×ç5 2.Cç6+ R×ç4 3.Df7‡

Auto-blocage préventif

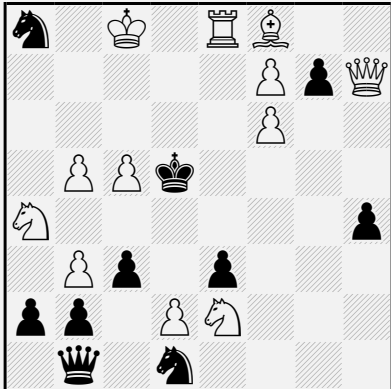
Sacrifice blanc

Mats modèles

Auto-clouage direct

SELECCIÓN DE PROBLEMAS DE NADEZHDA LEONTIEVA

Nadezhda A. LEONTIEVA Shakhmaty v SSSR 1969



♯2 (12+10) C+

1.d3? [2.Dé4,Df5♯]

mais 1...g6!

1.d4? [2.Té5♯]

mais 1...g×f6!

1.d×é3? [2.Cf4♯]

mais 1...g5!

1.d×ç3! [2.Cf4,ç4♯]

1...C×ç3 2.Ca×ç3♯

1...Cb6+ 2.C×b6♯

1...Dé4 2.D×é4♯

1...Df5+ 2.D×f5♯

Albino blanc

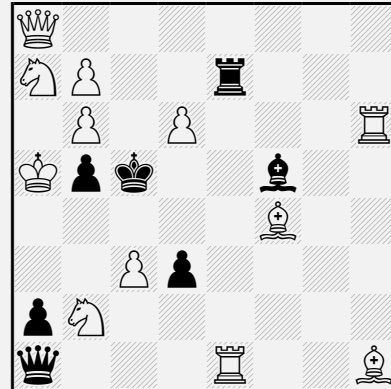
Echecs croisés

Rudenko

Option

Duel Blanc-Noir

Nadezhda A. LEONTIEVA Problem 1973



♯2 (12+7) C+

1.Dg8! [2.Dd5♯]

1...Aé4 2.Aé3♯

1...Té4 2.C×d3♯

1...Aé6 2.Dg1♯

1...Té6 2.Dç8♯

1...Té5 2.T×é5♯

(1...Tf7 2.Aé3,Té5,Dg1♯)

Correction noire

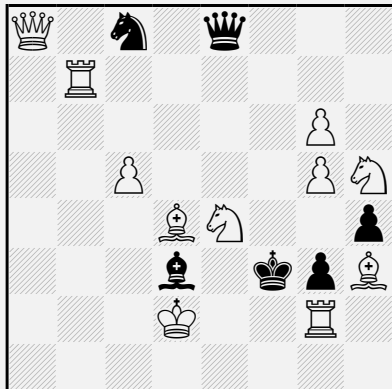
Anti-dual

Four hands round

SELECCIÓN DE PROBLEMAS DE NADEZHDA LEONTIEVA

Nadezhda A. LEONTIEVA

Problemista 1970



♯2 (11+6) C+

1.Rç1! [2.Cd2♯]
 1...A×é4 2.Tb3♯
 1...D×é4 2.Tf7♯
 1...R×é4 2.Td7♯

Boros

Batterie blanche

Captures multiples d'une pièce blanche

Mat par clouage

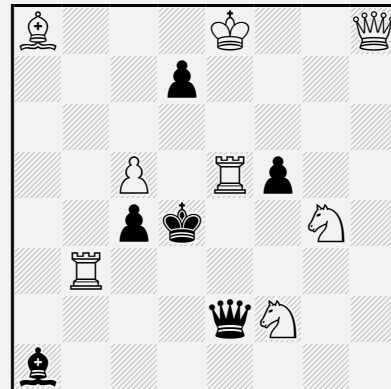
Clouage indirect

Défenses sur la même case

Duel case-pièce

Nadezhda A. LEONTIEVA

Problem 1979



♯2 (8+6) C+

1.Tb5! [2.T×é2,Té3,Té4♯] D×é5+
 2.D×é5♯

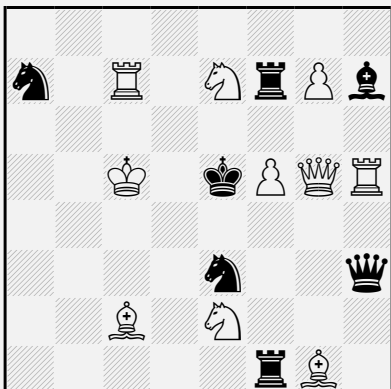
Clé ampliative

Pseudo-Karlström-Fleck

SELECCIÓN DE PROBLEMAS DE NADEZHDA LEONTIEVA

Nadezhda A. LEONTIEVA

Sachové umení 1970



♯2

(10+7) C+

1.Tç6! [2.Té6♯]

1...C×f5 2.Ad4♯

1...C×ç6 2.C×ç6♯

1...A×f5 2.Cg6♯

1...T1×f5 2.Df4♯

1...T7×f5,Tf6 2.D(×)f6♯

1...D×f5 2.D×é3♯

(1...T×é7 2.Df6,D×é7♯)

Changement de pièce clouante

Clé de sacrifice

Captures multiples d'une pièce blanche

Mat par clouage

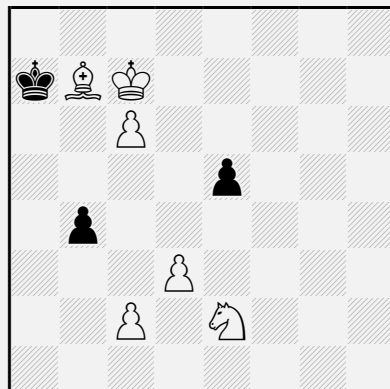
Auto-clouage direct

Défenses sur la même case

Duel case-pièce

Nadezhda A. LEONTIEVA

Sachové umení 1970



♯3

(6+3) C+

1.ç4! blocus

1...b3,b×ç3 e.p. 2.C(×)ç3 [3.Cb5♯]

1...é4 2.Cd4 [3.Cb5♯]

Prise en passant

Blocus apparent

P... Cañizores

SELECCIÓN DE PROBLEMAS DE NADEZHDA LEONTIEVA

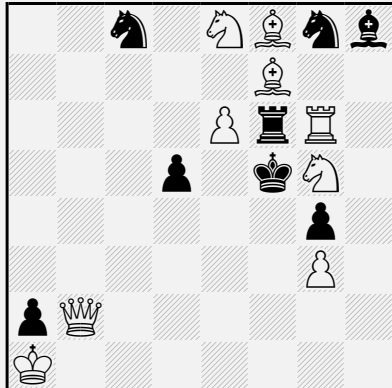
Mikola M. VELIKY

Vasil DYACHUK

Nadezhda A. LEONTIEVA

Vasil MARKOVTSY

Die Schwalbe 2002



#2

(9+8) C+

1.Ad6? [2.Dç2,Df2,Dé5‡]

mais 1...T×é6!, T×g6!, T×f7!

1.Ag7! blocus

1...T×é6 2.Df2‡

1...T×g6 2.Dé5‡

1...T×f7 2.Dç2‡

1...Cb6,Cd6,Ca7,Cçé7 2.C(×)d6‡

1...Ch6,Cgé7 2.D×f6‡

1...A×g7 2.C×g7‡

1...d4 2.Db5‡

Anti-triple

Chernet

Clé de sacrifice

Auto-clouage indirect

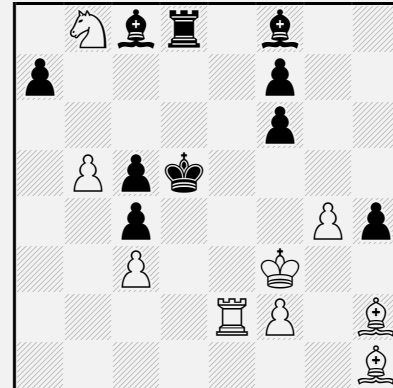
Zuk

Duel Noir-Blanc

Nadezhda A. LEONTIEVA

Concours ukrainien 1965

3° Place



#3

(9+10) C+

1.Cd7! [2.C×f6‡]

1...A×d7 2.Ré3+ Ré6 3.Rd2‡

1...T×d7 2.Rf4+ Rd6 3.Rf5‡

1...Ag7 2.Té7 [3.Ré2,Ré3‡]

(1...Aé7 2.Aç7,Ab8,Té3,T×é7,Rg2)

Auto-blocage préventif

Anderssen

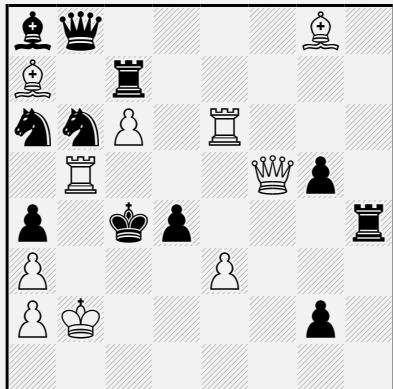
Batterie royale

Batterie blanche

Clé de sacrifice

SELECCIÓN DE PROBLEMAS DE NADEZHDA LEONTIEVA

Nadezhda A. LEONTIEVA Gazeta Czestochowska 1970



♯2 (10+11) C+

1.Rç2? [2.Dd3‡]

mais 1...Té4!

1.Tb3! [2.Db5‡]

1...Ca~ 2.Tb4‡

1...Cd5 2.Dd3‡

1...Cd7 2.Té8‡

1...Cç8 2.Té7‡

1...A×ç6 2.T×ç6‡

1...a×b3 2.a×b3‡

1...d×é3 2.Té4‡

Correction de menace

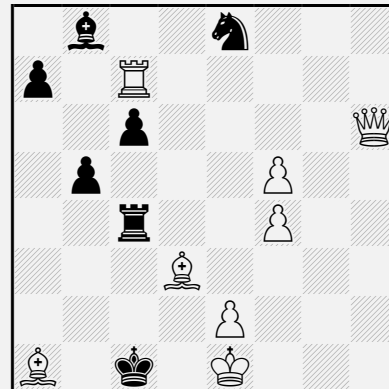
Echec double

Batterie blanche

Clé de sacrifice

Clouage indirect

Nadezhda A. LEONTIEVA Shakhmaty v SSSR 1968



♯3 (8+7) C+

1.Dh1! [2.Rf2+ Rd2 3.Dé1‡] T×f4

2.D×ç6+ Tç4 3.Dh6‡

Changement de pièce clouante

Circuit de Dame

Circuit en triangle

Circuit blanc

Switchback noir

Switchback de Tour

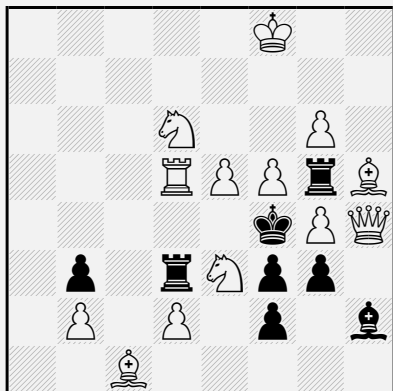
Batterie royale

Batterie blanche

Mat par clouage

SELECCIÓN DE PROBLEMAS DE NADEZHDA LEONTIEVA

Nadezhda A. LEONTIEVA Tidskrift för Schack 1973



#2 (13+8) C+

1.Cf1! blocus

1...Td4 2.d3‡

1...T×d5 2.d4‡

1...Tç3 2.d×ç3‡

1...Té3 2.d×é3‡

1...Ag1 2.D×g3‡

1...T×d2 2.A×d2‡

1...T×g4 2.D×g4‡

1...T×f5 + 2.g×f5‡

1...T×h5 2.g×h5‡

1...T×g6 2.g5‡

1...g2 2.D×h2‡

Albino blanc

Croix de Tour

Correction noire du 3° degré

Chasse

Umnov

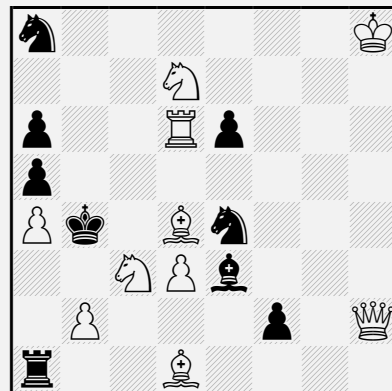
Demi-batterie blanche

Batterie blanche

Captures réciproques

Auto-clouage direct

Nadezhda A. LEONTIEVA Problemas 1973



#3 (10+9) C+

1.Td5! [2.Db8+ Cb6 3.D×b6‡]

1...Cg3,Cç5 2.Ca2+ T×a2 3.Aç3‡

1...Af4 2.Aç5+ C×ç5 3.Td4‡

1...é5 2.Tb5+ a×b5 3.Cd5‡

1...Cç7 2.D×ç7

[3.Dç4,D×a5,Db6,Db7,Db8‡] A×d4+

3.T×d4‡

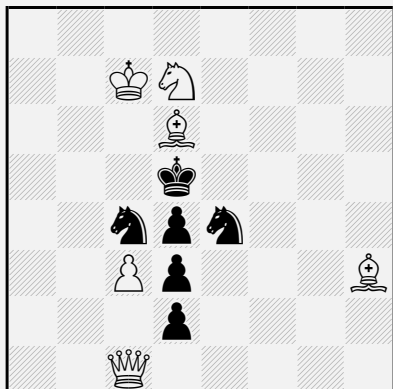
Zilahi cyclique

Kozhakin

Sacrifice blanc

SELECCIÓN DE PROBLEMAS DE NADEZHDA LEONTIEVA

Nadezhda A. LEONTIEVA Buletin Problemistic 1973



♯3 (6+6) C+

1.D×d2! [2.D×d3,Dg5+]

1...Cç×d6 2.Da2+ Cç4 3.Da8‡

1...Cé×d6 2.Dg2+ Cé4 3.Dg8‡

Switchback noir

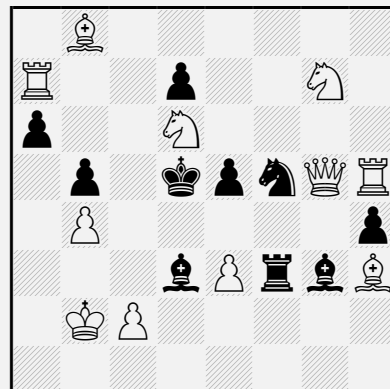
Switchback de Cavalier

Auto-blocage

Auto-clouage direct

Déclouage direct

Nadezhda A. LEONTIEVA Buletin Problemistic 1974



♯3 (11+10) C+

1.Dg6! [2.Df7+ Rç6 3.T×a6‡]

1...C×é3,Ch6,Cé7,C×g7 2.D×d3+ Rç6

3.T×a6‡

1...Cd4 2.é4+ Rç6/A×é4 3.T×a6/D×é4‡

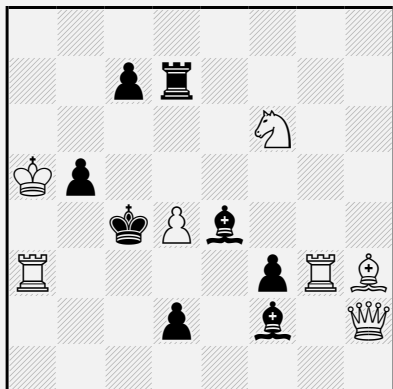
(1...Rç6/C×d6 2.T×a6+,Tç7+/D×d3+,D×d6+)

Auto-clouage indirect

Auto-déclouage indirect

SELECCIÓN DE PROBLEMAS DE NADEZHDA LEONTIEVA

Nadezhda A. LEONTIEVA
Buletin Problemistic 1974



♯3 (7+8) C+

1.Tg5! [2.Tc5+ Rxd4 3.Dxf2,Dé5‡]

1...Ad5 2.Af1+ Rxd4 3.Dxf2‡

1...Td5 2.Dxc7+ Rxd4/Tc5

3.Dc3/Dxc5‡

1...Axd4 2.Af1+ Ad3 3.Axd3‡

1...Txd4 2.Dxc7+ Ac6 3.Dxc6‡

1...Af5 2.Dé5 [3.Dc5‡] Td5/Axd4/Txd4

3.Dxd5/Dxb5/Dxb5,Dxc7‡

1...Ag3 2.Dxd2 [3.Tc3,Tc5,Dc3,Db4‡]

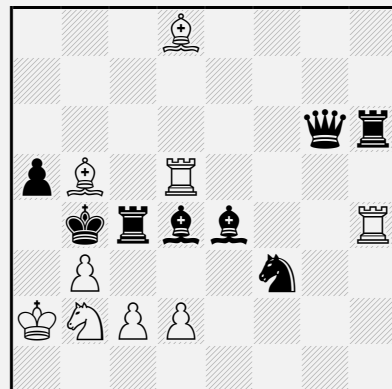
(1...Rxd4 2.Dxf2+,Dé5+)

Auto-blocage

Babushka

Auto-clouage direct

Nadezhda A. LEONTIEVA
Gazeta Czestochowska 1967



♯3 (9+8) C+

1.Ac6! [2.Axa5,Tb5‡]

1...Ac5 2.Cd3+ Axd3 3.c3‡

1...Axd5 2.Aé7+ Dd6/Tc5,Ac5

3.Cd3/c3‡

1...Tc5 2.c3+ Axc3/Txc3

3.Cd3/Axa5,Tb5‡

Zilahi

Echange des 2° et 3° coups blancs

Demi-clouage noir

Cycle d'auto-clouages

Sacrifice blanc

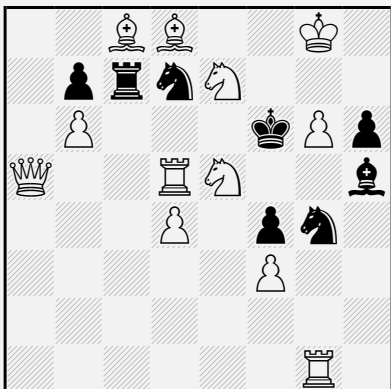
Mat par double clouage

Auto-clouage direct

SELECCIÓN DE PROBLEMAS DE NADEZHDA LEONTIEVA

Nadezhda A. LEONTIEVA

? 1966



#2

(12+8) C+

1.Dé1! blocus

1...Cg~ 2.Td6‡

1...Cd~ 2.Dh4‡

1...A×g6 2.C×g4‡

1...T~ 2.C×d7‡

1...Rg5 2.C×d7‡

1...Ré6 2.C×g4‡

Foschini

Batterie blanche

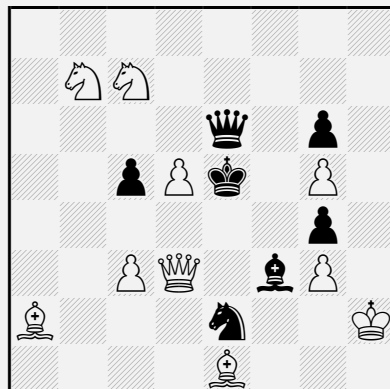
Captures réciproques

Mat par clouage

Auto-clouage indirect

Nadezhda A. LEONTIEVA

Leninska Zmina 1978



#3

(10+7) C+

1.Ab1! [2.Dé3 + Aé4 3.D×é4‡]

1...D×d5 2.D×g6 [3.Df5,Df6,Dg7‡]

Dd3,Dé6/Df7 3.D(×)é6/Dd6‡

1...Df5 2.Da6 [3.Dd6‡]

D×b1,Dç2,Dd3,Dé6,Df8/Dd7,Df6/C×ç3/

Dé4 3.D(×)é6/D(×)f6/A×ç3/Dé6,Df6‡

Echange de place (cyclique) de pièces

blanches et noires

Switchback noir

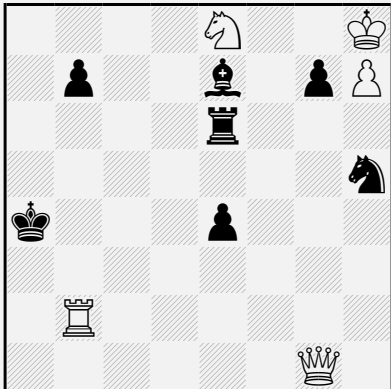
Switchback de Dame

Umnov différé

Sacrifice blanc

SELECCIÓN DE PROBLEMAS DE NADEZHDA LEONTIEVA

Nadezhda A. LEONTIEVA
Jubilé V. Pidlivailo-75, Chervony
girnik 2002
Recommandé spécial



#2 (5+7) C+

1...Ad6 2.Da7‡

1...Td6 2.Da1‡

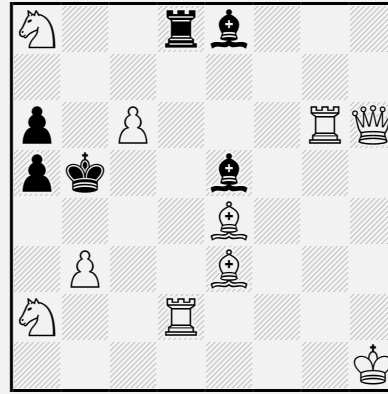
1.Cd6! [2.Da1,Da7‡]

Rudenko

Grimshaw

Novotny

Nadezhda A. LEONTIEVA
Jubilé M. Veliky-65 2001-02
Prix spécial



#2 (10+6) C+

1.Df8! [2.Dc5‡]

1...Ad4 2.Ad3‡

1...Ad6 2.Df1‡

1...Td4 2.Cc3‡

1...Td6 2.Cc7‡

1...Td5 2.Txd5‡

Correction noire

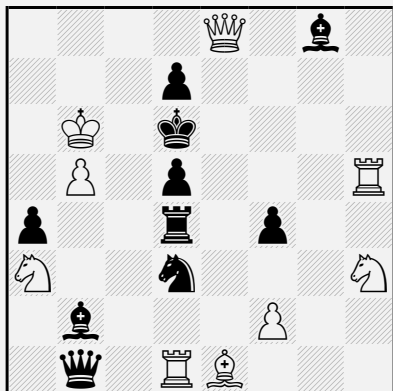
Anti-dual

Four hands round

SELECCIÓN DE PROBLEMAS DE NADEZHDA LEONTIEVA

Nadezhda A. LEONTIEVA

Na Smenu! 1968



♯3 (9+10) C+

1.Cg5! [2.Th6+,Th7]

1...Cç1,C×é1,C×f2,Cb4,Cç5 2.Cf7+

A×f7 3.Dé5‡

1...Aé6 2.Cé4+ T×é4,d×é4 3.Df8‡

1...Tç4 2.C×ç4+ d×ç4 3.Cé4‡

1...Té4 2.C×é4+ d×é4 3.Ab4‡

1...Tb4 2.A×b4+ C×b4/Cç5

3.Cç4/Cç4,A×ç5‡

Zilahi cyclique

Cycle des 2° et 3° coups blancs

Chasse

Demi-clouage noir

Auto-blocage

Sacrifice blanc

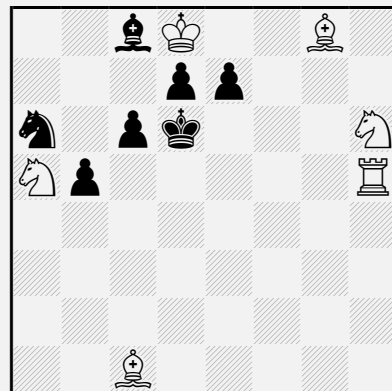
Captures réciproques

Mat par clouage

Auto-clouage indirect

Nadezhda A. LEONTIEVA

Sachové umení 1973



♯2 (6+7) C+

1.Aé3! blocus

1...C~ 2.Aç5‡

1...Ab7 2.C×b7‡

1...b4 2.Cç4‡

1...ç5 2.Td5‡

1...é6 2.Cf7‡

1...é5 2.Cf5‡

Somov B2

Auto-blocage



Paolina Borghese as Venus victrix

Antonio Canova