

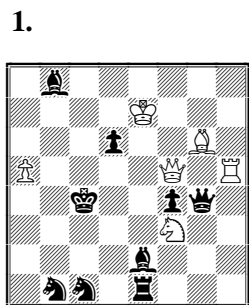
BROODINGS...

N° 31: October 2006

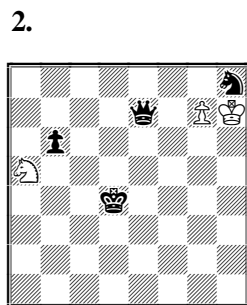
brood: to ponder morbidly or persistently [Collins Dictionary]

C.J.Feather 10 Tinwell Road STAMFORD PE9 2QQ England
[cfeather@ukonline.co.uk]

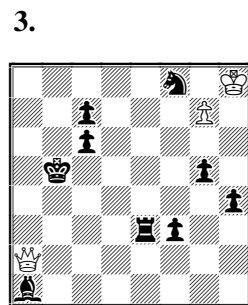
This time we have rather less variety than usual. Two of the h#2s illustrate the Schneider pattern. They were composed some time ago; now that the theme tourney in *ORBIT* has been completed it seems a good moment to publish them, as well as the extras noted with the solutions. The three longer helpmates are all intended as unpretentious solving entertainment, a little antidote to the growing number of problems of this length where the thematic description is more impressive than what happens on the board... Finally the three unorthodox problems are very much of a muchness. They are all serieshelpmates showing the same neutral pawn idea, promotions on different sides of the board in the set mate and in the solution. Note that only the last two use Circe. I hope that some amusement is to be had by all, and I send everyone my best wishes. Whether there will be another *Broodings* in 2006 rather depends on other commitments (such as FIDE-Album judging), but I shall try my best to be with you again by the new year.



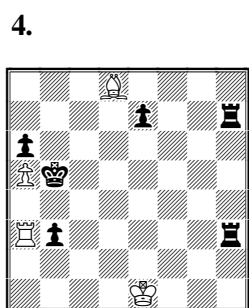
1. h#2 b) f3=>♙



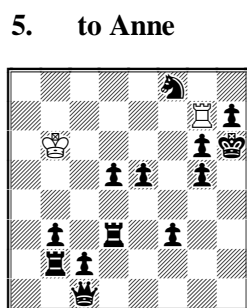
2. h#2 2 sols b) ♘a5>c7



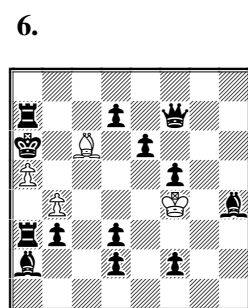
3. h#2 2 sols b) ♙b5>g3



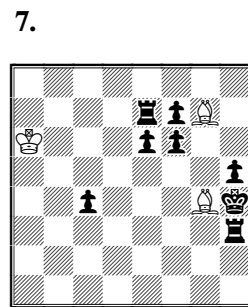
4. h#3 2 solutions



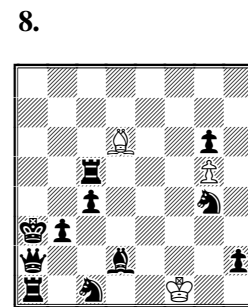
5. to Anne h#3 3 solutions



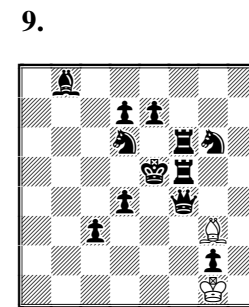
6. h#3 4 solutions



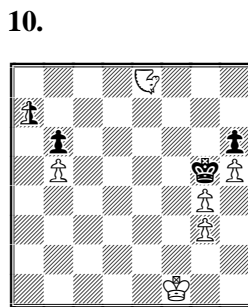
7. h#4½



8. h#4½



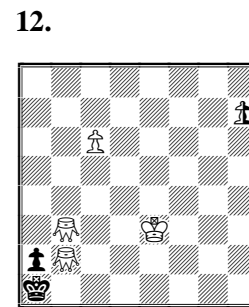
9. h#5



10. sh#15* neutral Pa7
Nightrider e8



11. sh#11* neutral Pb7
Equihopper d3 Circe



12. sh#16* neutral Ph7
Grasshoppers Circe

SOLUTIONS:

1 a) 1.Qxh5 Qc2+ 2.Kd5 Be4# b) 1.Qxg6 Qc5+ 2.Kd3 Rd5# 2 a) 1.Qd6 g8Q 2.Kc5 Qc4# & 1.Qb4 gxh8Q+ 2.Kc5 Qe5# b) 1.Qd6 gxh8Q+ 2.Kc5 Qc3# & 1.Qb4 g8Q 2.Kc5 Qd5# Schneider pattern in miniature. Are defects such as the repeated BK move inevitable in this form? At least all the mates are different. 3 a) 1.Re5 g8Q 2.Kb4 Qc4# & 1.Rc3 gxf8Q 2.Kb6 Qb4# b) 1.Re5 gxf8Q 2.Kh3 Qxf3# & 1.Rc3 g8Q 2.h3 Qxg5# I found lighter settings with better twinning, but excessive symmetry: B31/3A: Kh2 Ba3 Pc7 // Kc4 Ra4 Rg5 Bb8 Sd8 Pa2 Pa6 Pa7 (3+8) h#2 2 sols b) Ba3>a5: a) 1.Re5 cxd8Q 2.Kb3 Qd3# & 1.Rg3 c8Q+ 2.Kb5 Qc5# b) 1.Re5 c8Q+ 2.Kb3 Qc3# & 1.Rg3 cxd8Q 2.Kb5 Qd5# B31/3B: Kh8 Sd5 Se3 Pg7 // Kf3 Rb4 Ba1 Sd6 Sf8 Ph3 Ph5 (4+7) h#2 2 sols b) Sd5>d1: a) 1.Rd4 g8Q 2.h2 Qg2# & 1.Rb2 gxf8Q+ 2.Kg3 Qf4# b) 1.Rd4 gxf8Q+ 2.Kg3 Qf2# & 1.Rb2 g8Q 2.h4 Qg4# 4 1.R7h4 (R3h4?) Bxe7 2.Ra4 Rxb3+ 3.Kxa5 Bd8# & 1.R3h5 (R7h5?) Rxb3+ 2.Ka4 Bxe7 3.Rb5 Ra3# 5 1.Ra2 Rc7 2.Ra7 Rxc2 3.Rg7 Rh2#, 1.Rc3 Rf7 2.Rc7 Rxf3 3.Rg7 Rh3# & 1.Qf4 Ra7 2.Qf7 Ra1 3.Qg7 Rh1# Cyclic black and white use of the a-,c- & f-files. ACF=my wife's initials. 6 1.d1B Bg2 2.Bf3 Bf1 3.Bb7 Bxd3#, 1.f1B Bf3 2.Bg2 Be2 3.Bb7 Bxd3#, 1.b2 Ba4 2.Bd5 Bb3 3.Bb7 Bc4# & 1.Bd8 Bxd7 2.Bb6 Bxe6 3.Qb7 Bc4# 2x2 different ways 7 1... Bxe6 2.f5 Bxc4 (Bd5?) Ree3 Be2 4.Reg3 Bg4 5.fxg4 Bf6# 8 1... Bxh2 2.Sh6 gxh6 3.Bb4 h7 4.Qxh2 h8Q 5.Se2+ Qxa1# 9 1.Kd5 Bh2 (Kh2/Kxg2?) 2.Qe4 Bxd6 3.e6 Bc5 4.Ke5 Ba7 5.d5 Bxb8# 10 1...NPa8NN# 1.NPa5 5.NPa1NN 7.NNhx5 8.NNd3 11.hxg3 14.Kh2 15.NNf2 g5# 11 1...NPb8NE# 1.NPb5 5.NPb1NE 6.NE5 8.Kh2 9.NEd7 10.NEH1 11.NEXd3 Bf5# 12 1...NPh8NG# 1.NPh5 5.NPh1NG 7.NGxb2 8.NGb4 9.Kb1 10.a1Q 11.Qg7 12.Ka1 14.NGh8 15.Qg2 16.Qa2 Gb2# The Gb2 guards itself.