

**Updated  
Announcement**

The Hungarian Chess Composers website on the occasion of the 15th anniversary of the introduction of the site, announces  
a **Jubilee Theme Tourney**  
in **Orthodox and Fairy sections**.

**Theme**

**Helpmate in 2,5 or more moves,  
which including battery creation with three or more solutions.**

**I.) In solutions a) and b)**, A and B form two-way batteries, then give battery mates. The front piece cannot attack the king in the mate position.

**II.) In solution c)**, after the front piece (A) of the battery that has been created is captured, the long-range piece (B) of the battery gives mate.

**See examples on the next page!**

**Judges:**

**I. Orthodox section: Ladislav Packa**

**II. Fairy section: Vlaicu CRISAN**  
**Fairy pieces and fairy conditions are allowed.**

Please, send computer tested problems only (indicate the program used for testing), to [j.mikitovics@gmail.com](mailto:j.mikitovics@gmail.com), till **November 30, 2022**.

**Number of entries per composer: no limit.**

**Joint problems: no limit.**

**The prize money pool is: € 1,000.**

The Preliminary and Final Award will be published on [the Hungarian Chess Composers website](#).

Please forward this announcement to interested parties, and reprint it in magazines or websites aimed at composers. Thank you in advance for your honorable participation in the Jubilee Tourney.

It is also advisable to follow the questions asked in [the MAT PLUS Website forum](#) and the answers to them.

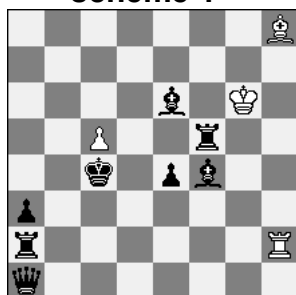
**September 2022 Budapest,**

Janos Mikitovics  
Tournament Director

## Examples by Janos Mikitovics

### I. Orthodox section

scheme 1



H#3 4+8 C+

7B/8/4b1K1/2P2r2/2k1pb2/p7/r6R/q7

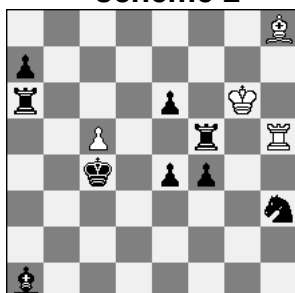
a) Diagram 2.1.1.. b) wRh2>g5

a1) 1 1.Rxc5 Rh7 2.Kd5 Rg7 3.Ke5 Rd7 # (the long-range piece (B) is on h8)

a2) 1.Kd5 Bxa1 2.Rb2 Rxb2 3.Ke5 Rd2 # (the long-range piece (B) is on a1)

b) 1.Rd5 Re5 2.Kd4 Kg7 3.Kxe5 Kg6 #

scheme 2



7B/p7/r3p1K1/2P2r1R/2k1pp2/7n/8/b7

H#3 4 sol.

a1) 1.Rxc5 Rh7 2.Kd5 Rg7 3.Ke5 Rd7# thematic

a2) 1.Rd5 Re5 2.Kd4 Kg7 3.Kxe5 Kg6# thematic

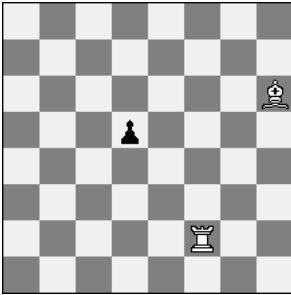
a3) 1.Kd5 Bf6 2.Rg5+ Bxg5 3.Ke5 Bf6# non-thematic

a4) 1.Bf6 Rxf5 2.Kd4 Rxf6 3.Ke5 Rf5# non-thematic, because the front piece cannot attack the king in the mate position!

[View in Helpmate Analyzer](#)

By exchanging theme pieces (batteries: **B&R to R&B**), the solutions are doubled.

See this sketch:



**H#2,5** bPd5, wBh6, wRf2

a) Solutions:

a1) 1... Rg2 2... Rg5 3... R~ #

a2) 1... Bc1 2... Rd2 3... R~ #

a3) 1... Rf3 2.d4 Re3 **3.dxe3 B~ #**

b) Solutions

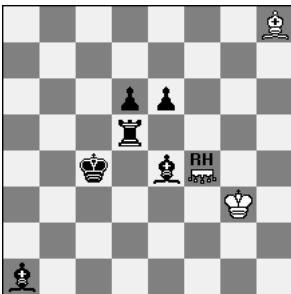
b1) 1... Be3 2... Bd2 3... B~ #

b2) 1... Ra2 2... Bd2 3... B~ #

b3) 1... Bd2 2.d4 Bc3 **3.dxc3 R~ #**

As a third solution if we take turns capturing the front pieces, we get the **Zilahi**.

## II. Fairy section scheme



**H#3** 3.1.1.. 3+6 C+

7B/8/3pp3/3r4/2k1bRH2/6K1/8/b7

(f4 = Rook Hopper)

a) 1.Bf5 **RHf6** 2.Kd4 Kf3 3.Ke5 **RHf4#** (the long-range piece (B) is on h8)

b) 1.Rf5 **Bxa1** 2.Kd5 **RHd4** 3.Ke5 **RHd7#** (the long-range piece (B) is on a1)

c) 1.Bg7 **RHd4** 2.Kxd4 Kg4 3.Ke5 **Bxg7#**