

Announcement
of Jubilee Tourney MICHAEL GRUSHKO – 60

Required are fairy-miniatures with free theme.

All types of problems are accepted but with at least one fairy condition.

All originals should be computer tested with any of the following programs (mentioning the program used): Popeye, WinChloe, Alybadix.

Judge: Michael Grushko.

Please send entries to the director, Paz Einat
(paz@pazeinat.com; 45a Moshe Levi St. Nes Ziona,
74207, Israel).

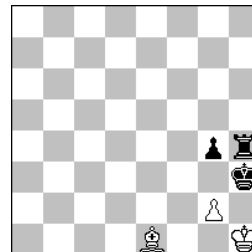
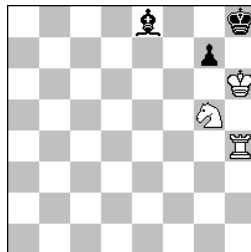
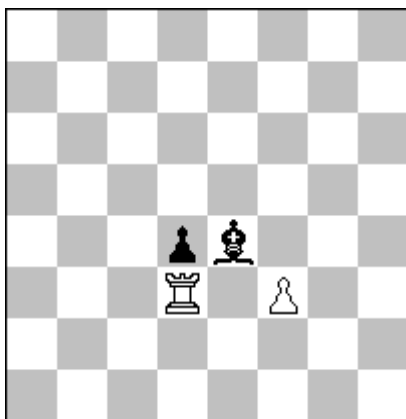
with the remark JT MG-60

Closing date: 31.05.2015

Example:

QUARTZ – 37 (08-2012) N 801

MICHAEL GRUSHKO



HS#5.5

RepublicanChess ParrainCirce EinsteinChess

C+ (2 + 2)

A

1....Be4*f3=R 2.Rd3*d4=Q [+wPf4] Rf3*f4=Q [+bPd5] 3.Qd4-a4=R [+wPc4] Qf4-d6=R 4.c4*d5=S Rd6*d5=Q [+bPd4] 5.Ra4*d4=Q [+wSg5] Qd5-g8=R [+bPg7] 6.Qd4-h4=R[+bKh8] + Rg8-e8=B[+wKh6] #

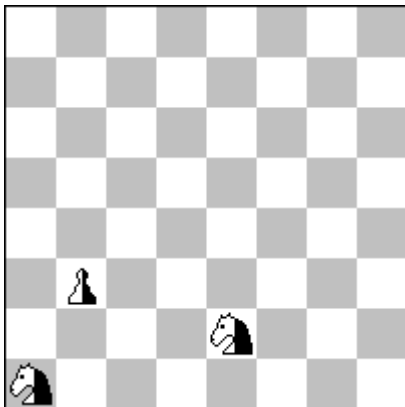
B) duplex

1....Rd3*d4=Q 2.Be4*f3=R [+bPe3] Qd4-d3=R [+wPf2] 3.Rf3*f2=Q Rd3*e3=Q [+wPg2] 4.Qf2-h4=R [+bPg5] Qe3-g1=R 5.g5-g4[+wKh1] + Rg1-e1=B[+bKh3]#

Jubilee tourney Petko Petkov – 70

2012

Special Prize
Michael Grushko



C+ original

HS#7* EinsteinChess

ParrainCirce RepublicanChess

(0 + 0 +3)

1....nSe2-c1=nP 2.nPc1-c2 nSa1*b3=nB
3. nPc2*b3=nS [+nPc4] nPa4*b3=nS
[+nBc2] 4.nBc2*b3=nR [+nSa4] nSa4-
c3=nP [+nSd2] 5.nSd2*b3=nB nPc3-c2
[+nRb2] 6.nBb3*c2=nR nRb2*c2=nQ
[-nPd2] 7.nPd2-d4 [+nRc4][+nKc1+]
nQc2*c4[+wKc3]#

1. nSa1-c2=nP nPb3-b2 2.nPc2-c3
nSe2*c3=nB 3.nPb2*c3=nS [+nPd4]
nPd4*c3=nS [+nBb2] 4.nBb2*c3=nR

[+nSd4] nSd4-b3=nP [+nSa2]

5. nSa2*c3=nB nPb3-b2 [+nRc2]

6. nBc3*b2=nR nRc2*b2=nQ [+nPa2]

7. nPa2-a4 [+nRb4][+nKb1] + nQb2*b4

[+wKb3] #

A problem consisting of only three neutral pieces, showing an interesting and long play in two phases, with multiple transformations of material. Difficult to compose, although, at the first sight it seems elementary (Petko A. Petkov)