

The 1st Israel Open Chess Problem Composition Tourney

The Israel Chess Composition Society is announcing a thematic composition tourney which is open for all composers in the world. This will be an annual tourney, but it will not be held in years in which WCCT composing will be ongoing. We intend to have at least two sections, each of which will be dedicated to an Israeli composer. Prizes will be given to award winners.

Section 1: Two-movers.

Dedicated to the memory of Yefim Rukhlis

Theme: Required are problems showing any cyclical themes/ideas/schemes involving dual avoidance as specified below. In the threat, or as a reply to a black defensive move, a putative mating move (or moves) is actually not a mate and is termed "mate try". This "mate try" must be part of the cycle. The following cyclical scheme is given as an example, but the tourney is open to any scheme meeting the requirement above including cycles in single phase problems. More details can be found in the article "Two-mover Cycles: Why discriminate the mate?" in issue 55 of Variantim or on our web site. No fairy pieces and conditions are allowed. **Judge: Paz Einat.**



1.♖e1 ? [2.♘f3 A #]
[2.♙e5 B ?]
1...♗xd6 a 2.♘e6 C #
but 1...♙e2 !
1.♖g5 ! [2.♙e5 B #]
[2.♘e6 C ?]
1...♗xd6 a 2.♘f3 A #
(1...♙c4 2.♖xc4#
1...♗g4 2.♖d5#
1...♗d7 2.♖d5#)

The cyclical scheme/matrix in this problem is (many additional matrices are allowed):

Key	Threat		Def a
	M	MT	M
x	A	B	C
y	B	C	A

Section 2: Help-mates in two moves.

Dedicated to Jean Haymann on occasion of his 80's birthday

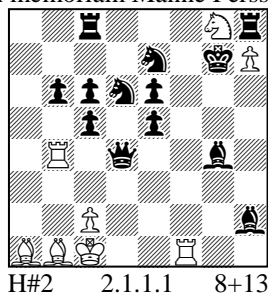
Theme: Required are help-mates in two moves with at least 2 solutions showing the theme of obstructions used as a dual avoidance mechanism. The definition is: During the solution a piece cannot move into a certain square since it is needed for the arrival of another piece which cannot capture it. Usually, the two pieces are of the same color, so we can have either black obstruction or white obstruction, but mixed white/black obstructions are also possible. More details can be found in the article "Dynamic Square obstructions as a tool for dual avoidance in helpmates in 2 moves" in Variantim issue #55. Twins and duplex are allowed but no fairy pieces and conditions are allowed.

Judge: Shaul Shamir

Shaul Shamir & Jean Haymann

Variantim 2011

In memoriam Manne Persson



1.♙xa1
1.♙c3? Prevents 1...c3 mixed W/B obstruction
1.♙d5? Prevents 2.♗d5 Black obstruction
1...c3 (c4?) 2.♗d5 ♖xg4#
1.♙xb4
1.♙c4? Prevents 1...c4 mixed W/B obstruction
1.♙g1? Prevents 2.♗g1 Black obstruction
1...c4 (c3?) 2.♗g1 ♗xe5#

Articles presenting the two themes, with a variety of examples, can be found in the web site of the Israel Chess Composition Society:

www.variantim.org

Entries to: **Omer Friedland**, Harimon 8 Givat Shmuel 54403, Israel, omrfree@gmail.com

Deadline: May 31, 2013