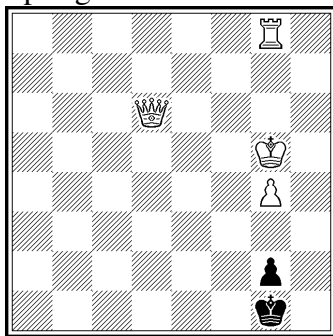


## Announcement of the jubilee tourney for the 60th birthday of Michael Schlosser

### Theme: Variation Asymmetry

- 1) In a chess problem with any stipulation (including fairy chess of all kinds and studies) the initial diagram position may be symmetrical or asymmetrical.
- 2) After the unique key move or after each one of more key moves (in case of problems with more solutions or twins) the position is *symmetrical*.
- 3) Each key move is immediately followed by at least one pair of *symmetrical moves* (symmetry axis of these moves = symmetry axis of the position).
- 4) The variations after each of such symmetrical pair of moves are *asymmetrical*.

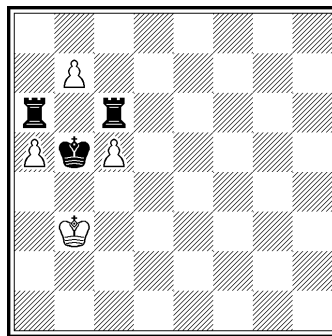
(1) Herbert Hultberg  
Springaren 1989



#3

1.Qg3 (2.Qe1+/Qe3+)  
1... Kf1 2.Re8 ~ 3.Re1#  
1... Kh1 2.Rh8+ Kg1 3.Qe1#

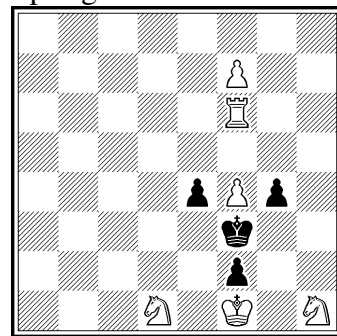
(2) Michael Schlosser  
Problemkiste 2013



h#2 0.1.2.1

1... b8=Q+  
2.Kxa5 Qb4#  
2.Kxc5 Qe5#

(3) Alexander Hildebrand  
Springaren 1989



s#3

1.f8=Q  
1... e3 2.Qb4 g3 3.f5 e2/g2#  
1... g3 2.Qc8 e3 3.Qf5 e2/g2#

Further examples can be found in

Michael Schlosser, Bernd Schwarzkopf: Varianten-Asymmetrie,  
Problemkiste 207, 2013, 53-59

(<ftp://ftp.fh-koblenz.de/pub/Fachbereiche/e-technik/dozenten/schlosser/sonst/pk207.pdf>)

**Judge:** Michael Schlosser

At the discretion of the judge the award can be divided into several categories. Prize fund at the discretion of the judge up to 600 EUR.

Entries until **30 June 2014** to the tourney director

Franz Pachl, Ungsteiner Straße 12, D-67067 Ludwigshafen

(preferably by e-mail: [fpa.levinho@web.de](mailto:fpa.levinho@web.de))

---

**Please reprint!**

---