

## Omri Admoni Memorial Chess Problem Composition Tourney

The Israeli Chess Composition Society is announcing a composition tourney in the memory of one of its young composers who passed away recently.

**Themes:** Required are **serial** helpmates or **Parry series** helpmates (see below) in any number of moves. During the solution a black piece is pinned and this pin is utilized. The use of grasshoppers and nightriders, two pieces used by Omri in his recent compositions, is allowed but not any other fairy pieces or conditions. Multiple solutions and twins are also allowed. All entries must be computer checked.

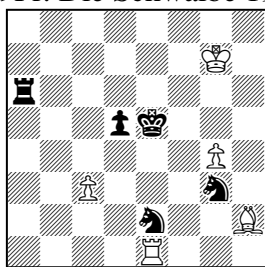
In Parry series helpmates (invented by Dan Meinking) the **series-side** may give check during the series and the **idle-side**, when checked, must immediately **parry** the threat. After a check-and-parry, the **series-side** continues the series. Parry series helpmates can be checked in Popeye (V4.55), directly or through Fancy, using the stipulation pser-H#n.

Send entries to the tourney director, Shaul Shamir (by email to: [yanivbenor@yahoo.com](mailto:yanivbenor@yahoo.com) or by regular mail: Dror 3 Str., Rishon Lezion 75305, Israel.)

Closing date: April 30, 2012. Judge: Paz Einat

### Examples:

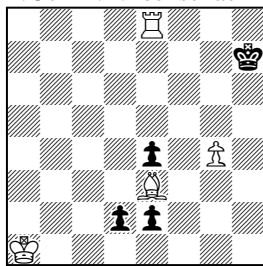
**Arno Tungler**  
3rd Pr. Die Schwalbe 1978



ser-H#5 2 sol 5+5

1. ♖e6 2. ♗e4 3. ♗2g3 4. ♖e5  
5. ♗e6 ♗xg3#  
1. ♖d6 2. ♗f4 3. ♗ge2 4. ♖e5  
5. ♗d6 ♗xe2#

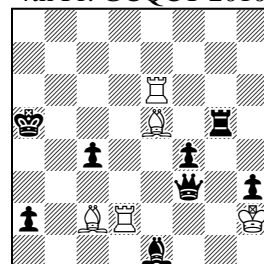
**Jorge J. Lois**  
3<sup>rd</sup> Pr. 37<sup>th</sup> T.T. feenschach 1978



ser-H#8 b)g4→f6 4+4

- a) 1. d1=♗ 2. e1=♖ 3. ♖g3  
4. ♗xg4 5. ♗f5 6. ♖g8 7. ♗h8  
8. ♗h7 ♗d4# b) 1. d1=♗  
2. e1=♖ 3. ♖g1 4. ♖g6 5. ♗f2  
6. ♗h3 7. ♗g5 8. ♗h6 ♗h8#

**Ricardo M. Vieira**  
4th Pr. GCQCT 2010



pser-H#4 2 sol 5+8

1. ♖b7 2. ♗g2 + ♗xh3 3. ♖b3 +  
♗c3 + 4. ♖b4 ♗d5#  
1. ♖b3 2. ♗g3 + ♗h1 3. ♖b7 +  
♗d5 + 4. ♖b5 ♗c3#