

FELIX SONNENFELD CENTENARY TOURNEY (2010)

To commemorate the 100th birthday of the great Brazilian composer Felix Alexander Sonnenfeld (March 18th 1910 – Feb 12th 1993) a theme-tourney is announced:

A Helpmate in 2 is required showing the following theme:

A white or black piece 'A' stands, at a certain stage, on the intersection square ('x') of two line pieces 'B' and 'C'. 'B' and 'C' can be both white, both black, or mixed colours (black & white). In both phases 'A' moves away from square 'x', opening the lines of 'B' and 'C' simultaneously and landing on different squares in each phase. Then, in phase 1 the thematic line of 'B' (only!) is closed again by any move of White or Black, whereas in phase 2 the same happens to 'C'.

Remarks:

- Acceptable are set-play, multi-solutions, variations (e.g., 1.2.1.1), duplex and any kind of twinning except zero-position. No fairy pieces/conditions.
- Pawns are allowed as thematic pieces.
- The opening and closing of the thematic lines may occur on any move.
- 'B' is not supposed to close the thematic line of 'C' on square 'x' and vice-versa.
- An anticipatory closing of any line to be opened later is permitted.
- A cyclic execution with more than two phases is allowed. When the lines of n (thematic) pieces are simultaneously opened then at least one of these lines must be closed again in each phase.
- Doubling (or multiplying) of the theme is allowed.

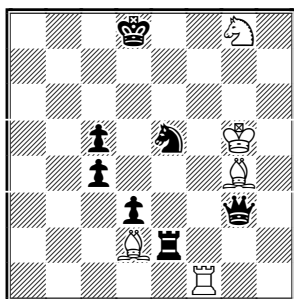
Judge: Uri Avner

Closing date: December 31th, 2010

Please submit your entries (either by email or airmail letter) to:
Marcos Maldonado Roland – Rua Senador Vergueiro, 56 apt. 1101
22230-001 – Rio de Janeiro – RJ – Brazil
marcosroland@terra.com.br

Example:

Ricardo Vieira & Mario Figueiredo
UBP – Colonelli Jub.Ty – 1982
4th Honourable Mention
(correction)



1.Sc6 Be3! (Rf4?) 2.Qc7 Rf8#

1.Sg6 Rf4! (Be3?) 2.Re8 Ba5#

H#2 2 solutions (5+7)