

JOSÉ FIGUEIREDO & MARIO FIGUEIREDO MEMORIAL TOURNEY (2010)

To celebrate the birthdays of Brazilian composers José Figueiredo (Aug 13th, 1920 – July 11th, 1978) and Mario Figueiredo (Oct 20th, 1950 – Sept 20th, 1995), father and son, a theme-tourney is announced:

A Helpmate in 2 is required showing the following theme:

At a certain stage (not necessarily in the diagram position), side A (White or Black) is responsible for an effect that is abandoned (by side A) or destroyed (by the opponent). The same effect must be present in the mating position by means of a maneuver by side A and/or the opponent.

Remarks:

- a) Acceptable are set-play, multi-solutions and any kind of twinning except zero-position. No fairy pieces/conditions.
- b) Anticipatory recover of the thematic effect is allowed.

Judge: Mario Parrinello

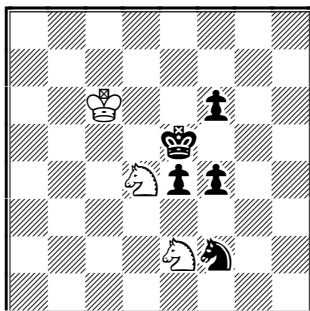
Closing date: December 31st, 2010

Please submit your entries (either by email or airmail letter) to:

Ricardo de Mattos Vieira – Av. Princesa Isabel, 273 apt. 1001 – Copacabana
22011-010 – Rio de Janeiro – RJ – Brazil
ricmatvieira@hotmail.com

The participants will receive a copy of the final award.

Scheme 1



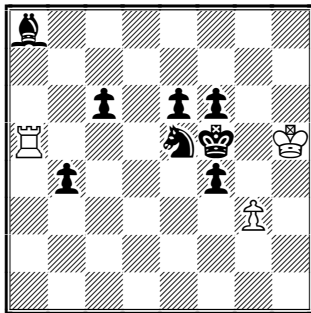
1.e3 Sg1 2.Se4 Sgf3 #

B1/B2: unblock e4 / block e4

W1/W2: unguard of d4 / guard of d4

H#2

Scheme 2

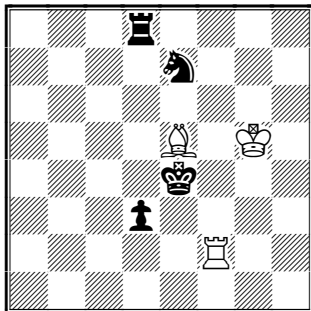


1.c5 T:c5 2.Le4 g4 #

B1 “destroys” a pin that is recovered by W1

H#2

Scheme 3



1.Sf5 Ld4 2.Td5 Tf4 #

anticipatory strategies:
W1 opens a (virtual) black line that was closed by B1

H#2