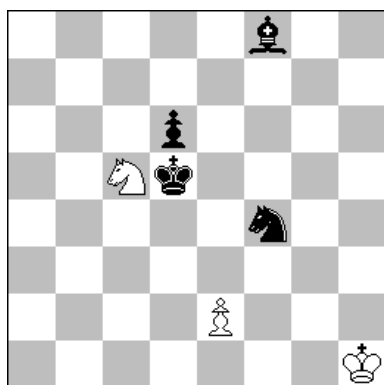


1



H#4 A-B 3+4

1

RALLO Vito

L'Italia Scacchistica 2003-2004

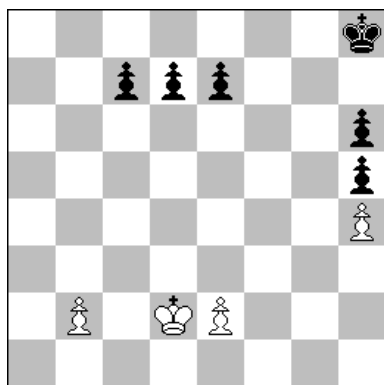
3° Premio

A - diagramma :

1.Ce6 Rg2 2.Ag7 Rf3 3.Ad4 e4+ 4.Re5 Cd7#

B - Af8 > c4 :

1.Rd4 Rh2 2.Cd5 Rg3 3.Cc3 Rf4 4.d5 Ce6#



H#6 Zeroposition 4+6
A-B

2

MINERVA Enzo

L. Vitale Mty - Sezione Ortodossi 2004

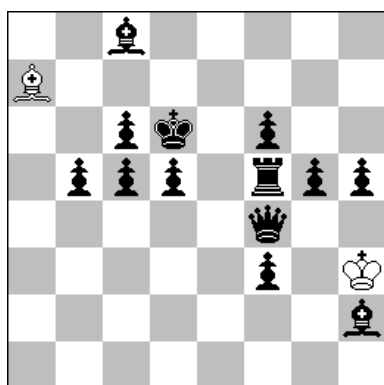
3° Premio

A - Rd2 > f8 :

1.c5 e4 2.c4 e5 3.c3 e6 4.cxb2 exd7 5.b1A d8C 6.Ah7 Cf7#

B - Rh8 > h1 :

1.d5 b4 2.d4 b5 3.d3 b6 4.dxe2 bxc7 5.e1T c8D 6.Tg1 Dh3#



H#4 A-B 2+13

3

CUPPINI Alessandro

R. Khatyamov-60 JTy 2003-2004

1° Premio

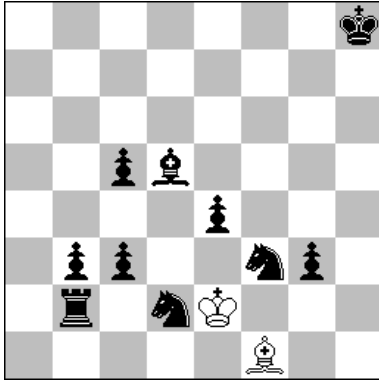
A - diagramma :

1.Db4 Ab6 2.c4 Ac7+ 3.Rc5 Ab8 4.Ad6 Aa7#

B - Aa7 > h7 :

1.Re6 Ag6 2.Te5 Af7+ 3.Rf5 Ag8 4.Ae6 Ah7#

2



H≠7

2+10

4

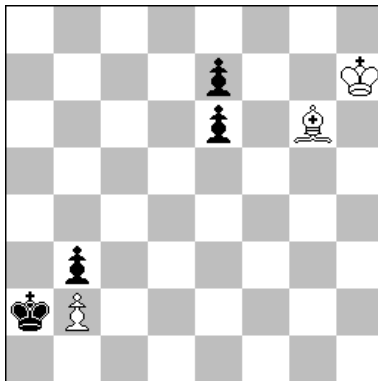
PARRINELLO Mario

E. Holladay MTy 2004

4° Premio

Soluzione :

**1.Rg7 Rd1 2.Rf6 Ac4 3.Re5 Axb3 4.Rd4 Ac4 5.Tb4 Af1
6.Cb3 Re2 7.Rc4 Re3≠**



H≠7

211...

3+4

5

VITALE Luigi

StrateGems 2002

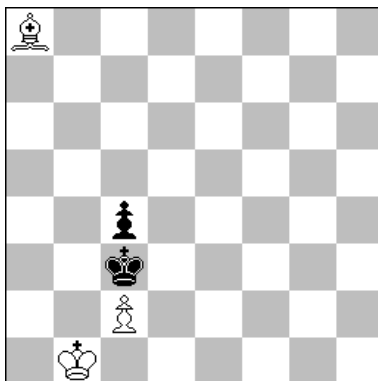
4° Premio

Soluzione 1 :

**1.e5 Rh6 2.e4 Rg5 3.e3 Rf4 4.e2 Re3 5.e1C Rd2
6.Cc2 Rc1 7.Ca1 Ab1≠**

Soluzione 2 :

**1.Ra1 Ac2 2.bxc2 b4 3.Rb2 b5 4.Rc3 b6 5.Rd4 b7
6.Re5 b8D+ 7.Rf6 Df4≠**



H≠7,5

A-B

3+2

6

**VITALE Luigi
FEATHER Chris**

Best Problems 2000-2001

1° Premio

A - diagramma :

**1... Ae4 2.Rd2 Ad3 3.cxd3 c4 4.Re1 c5 5.d2 c6 6.d1A c7
7.Ae2 c8D 8.Rd1 Dc1≠**

B - Rb1 > c6 :

**1... Rb6 2.Rd4 Ad5 3.Re5 Axc4 4.Rd6 Ad5 5.Rd7 c4 6.Rc8 c5
7.Rb8 c6 8.Ra8 c7≠**