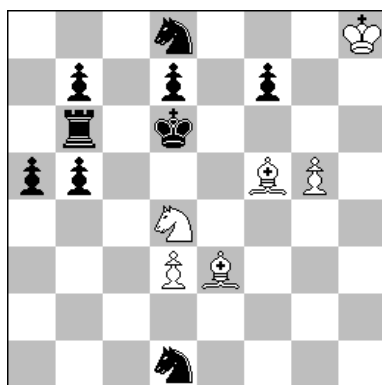


1



H≠2 A-B-C-D 6+9

1

RALLO Vito
FRANTZOV G.M.

Torre & Cavallo Scacco! 2000

1° Premio

A - diagramma :

1.Rc7 Cc6 2.dxc6 Af4≠

B - Af5 > f3 :

1.Rc5 Ad2 2.d6 Cb3≠

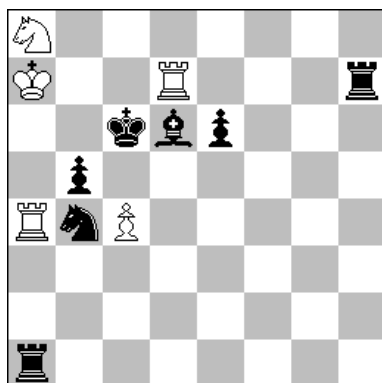
C - Af5 > c6 :

1.Re7 Ce6 2.dxe6 Ac5≠

D - Af5 > c8 :

1.Re5 Ce2 2.d5 Af4≠

2



H≠2 A-B 5+7

GAROFALO Antonio
SPESSATO Gianluca

Torre & Cavallo Scacco! 2000

2° Premio

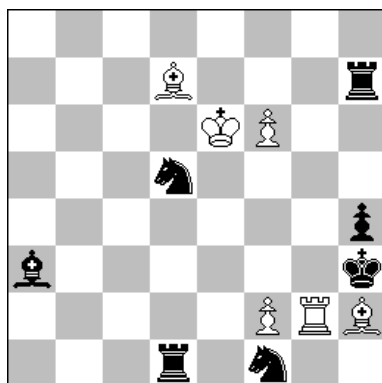
A - diagramma :

1.Ae7 Td5 2.Ca2 Ta6≠

B - senza Pc4 :

1.Ca2 Td4 2.Ae7 Tc7≠

3



H≠2 A-B 6+7

GAROFALO Antonio

L'Italia Scacchistica 2003

4° Premio

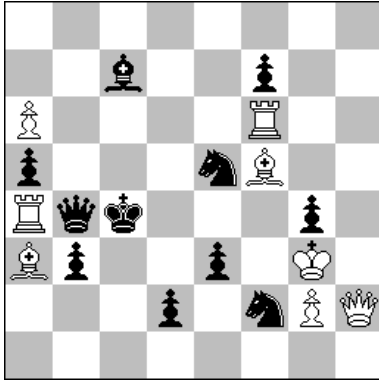
A - diagramma :

1.Ad6 Tg7 2.Axh2 Rf7≠

B - Cd5 > f7 :

1.Ce3 Ad6 2.Cxg2 Re7≠

2



H#2 2111 8+11

4

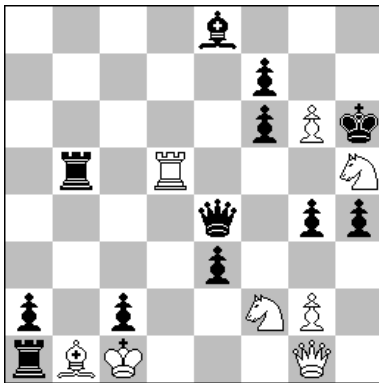
PARRINELLO Mario

L'Italia Scacchistica 2003

1° Premio

Soluzione 1 : **1.Rc3 Dh8 2.Db8 Tc6#**

Soluzione 2 : **1.Rb5 Dh5 2.Df8 Ad7#**



H#2 2111 8+12

5

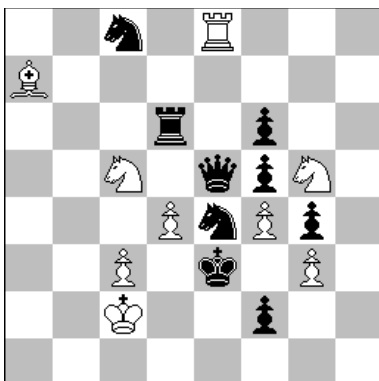
PARRINELLO Mario

Telescacco 2000-2004

1° Premio

Soluzione 1 : **1.De7 Dd1 2.cxd1C Cxg4#**

Soluzione 2 : **1.Dxg2 Cd1 2.cxd1A Dxe3#**



H#2 2111 9+9

6

PARRINELLO Mario

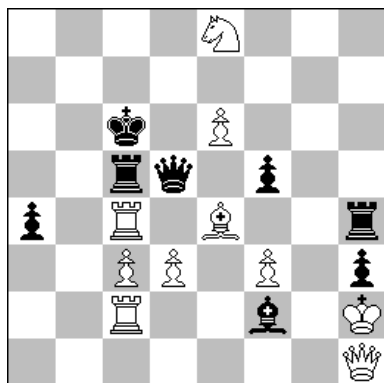
BCM 2004

2°/3° Premio ex-aequo

Soluzione 1 : **1.Dxd4 Ccxe4 2.fxe4 Txe4#**

Soluzione 2 : **1.Cxc5 dxe5 2.fxe5 Txe5#**

3



H#2 2111 10+8

7

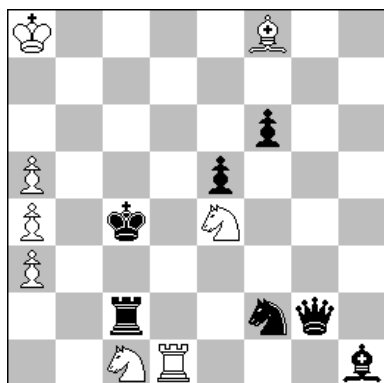
PARRINELLO Mario

Orbit 2004/II

2° Premio

Soluzione 1 : **1.Txc4 Db1 2.Td4 cxd4#**

Soluzione 2 : **1.Dxe4 Tb2 2.Dg4 fxg4#**



H#2 2111 8+7

8

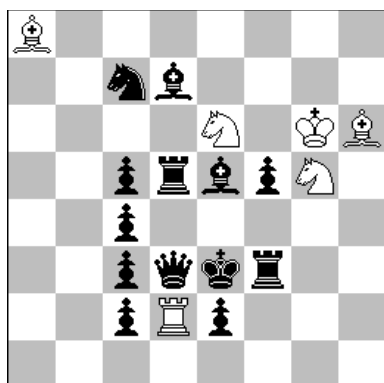
PARRINELLO Mario

Problem Paradise 2002

2° Premio

Soluzione 1 : **1.Tb2 Td3 (Ab4?) 2.Tb7 Cd2#**

Soluzione 2 : **1.Tc3 Ab4 (Td3?) 2.Tf3 Cd6#**



H#2 2111 6+13

9

PARRINELLO Mario

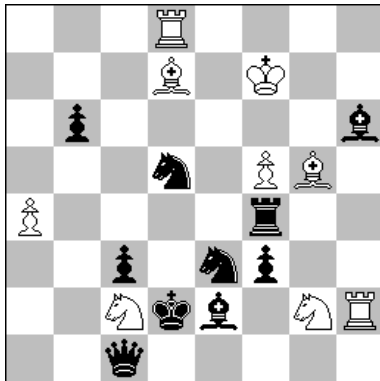
Probleemblad 2002

2° Premio

Soluzione 1 : **1.De4 Cxe4 2.Rxe4 Cxc5#**

Soluzione 2 : **1.Td4 Cxd4 2.Rxd4 Cxf3#**

4



H#2 2111 9+10

10

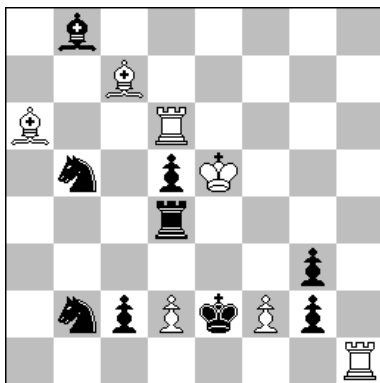
PARRINELLO Mario

Problem Forum 2003

3° Premio

Soluzione 1 : **1.Txa4 Cgxe3 2.Cxe3 Axa4#**

Soluzione 2 : **1.Cxf5 Cxf4 2.Cxf4 Axf5#**



H#2 2111 7+9

11

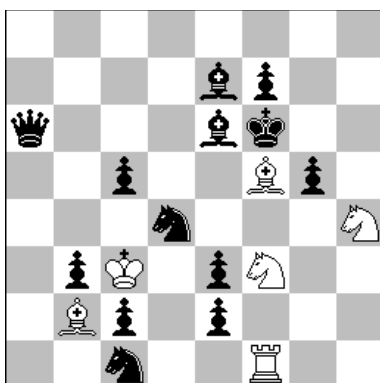
PARRINELLO Mario

Idee & Form 2004

3° Premio

Soluzione 1 : **1.Rxd2 Txd5 2.Cd6 Aa5#**

Soluzione 2 : **1.Rxf2 Ab6 2.Cc7 Tf6#**



H#2 2111 6+13

12

PARRINELLO Mario

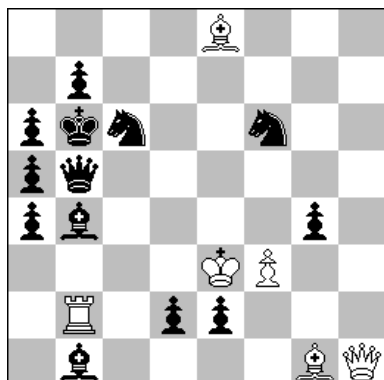
L'Italia Scacchistica 2004

3° Premio

Soluzione 1 : **1.Cxf5 Cd2 2.exd2 Rxd2#**

Soluzione 2 : **1.Cxf3 Axc2 2.bxc2 Rxc2#**

5



H#2 2111 6+13

13

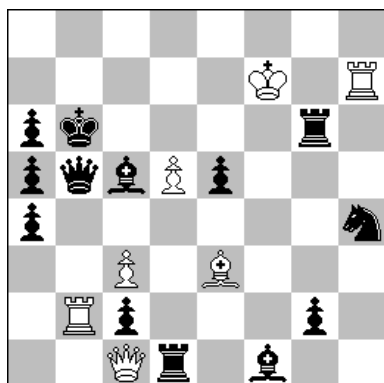
PARRINELLO Mario

Telescacco 2000

1°/2° Premio ex-aequo

Soluzione 1 : **1.Af8 Dh2 (Dh7?) 2.Ce7 Rxd2#**

Soluzione 2 : **1.Df5 Dh7 (Dh2?) 2.Ce5 Rxe2#**



H#2 2111 7+13

14

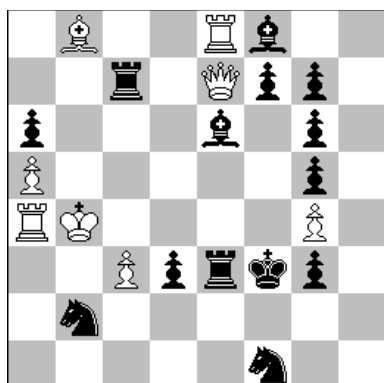
PARRINELLO Mario

Idee & Form 2003

4° Premio

Soluzione 1 : **1.Dxb2 Re8 2.Td3 Dxb2#**

Soluzione 2 : **1.Axe3 Rf8 2.Ad3 Dxe3#**



H#2 A-B 8+14

15

PARRINELLO Mario

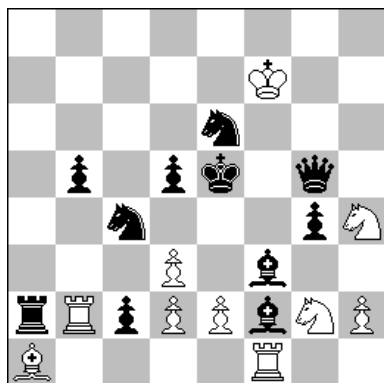
Best Problems 2001

1° Premio

A - diagramma :
1.Tc4+ Rb3 2.Re4 Db7#

Pc3 > h3 :
1.Ac4 Rc3 2.Rf4 Dxf7#

6



H#2 2111 10+11

16

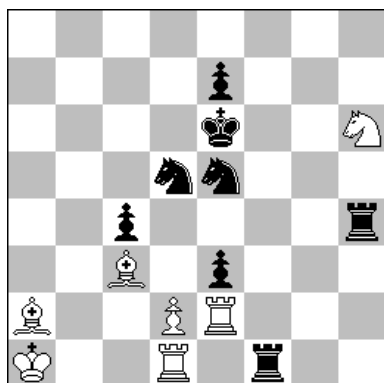
PARRINELLO Mario

Orbit 2001

1° Premio

Soluzione 1 : **1.Axh4 Txb5+ 2.Rf5 e4#**

Soluzione 2 : **1.Axg2 Tb4+ 2.Rf4 e3#**



H#2 A-B 7+8

17

PARRINELLO Mario

Moskovskaya Matreshka-Portoroz 2002

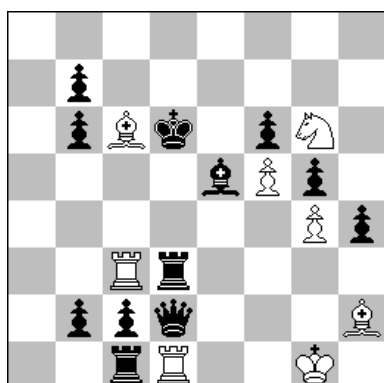
1° Premio

A - diagramma :

1.Cg4 dxe3 2.Cxe3 Axc4#

Pd2 > d3 :

1.Cf4 dxc4 2.Cxc4 Txe3#



H#2 A-B 8+12

18

PARRINELLO Mario

The Problemist 2003

1° Premio

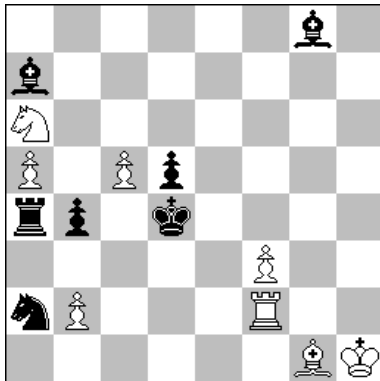
A - diagramma :

1.Tg3 Txg3 2.Ac3 Txc3#

Ae5 = Ce5 nero :

1.Df4 Cxf4 2.Cg6 Cxg6#

7



H#2 A-B-C 8+7

19

PARRINELLO Mario

Torre & Cavallo Scacco! 2001 (Versione 2003)

1° Premio

A - diagramma :

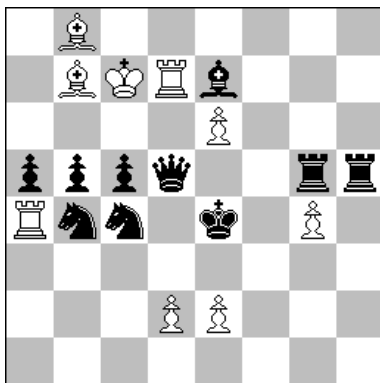
1.Ab8 (b3?) Cxb4 2.Ae5 Tc2#

Ca6 > b7 :

1.Ah7 (Ab8?) Cd6 2.Ad3 Te2#

Ca6 > e7 :

1.b3 (Ah7?) Cg6 2.Tc4 Td2#



H#2 A-B 9+10

20

PARRINELLO Mario

StrateGems 2003

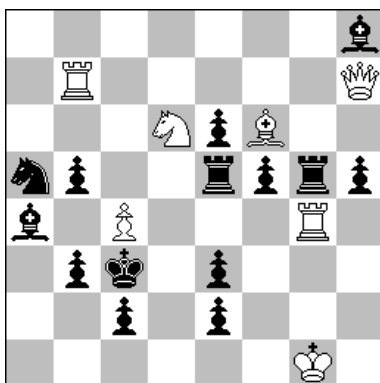
2° Premio

A - diagramma :

1.Dxb7+ Rxb7 2.Ce3 d3#

Re4 > d4 :

1.Dxd7+ Rxd7 2.Cd3 e3#



H#2 2111 7+14

21

PARRINELLO Mario

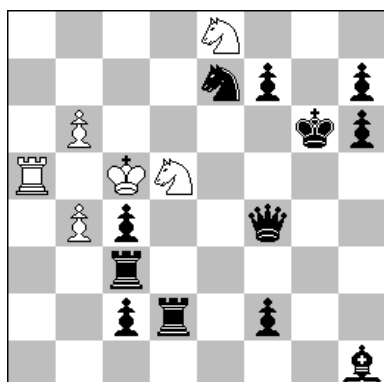
Best Problems 2003

2° Premio

Soluzione 1 : **1.Rd3 Cxf5 2.Texf5 Td7#**

Soluzione 2 : **1.Rb4 Cxb5 2.Txb5 De7#**

8



H#2 2111 6+12

22

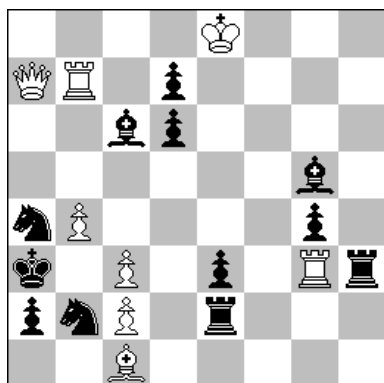
PARRINELLO Mario

Figueiredo MTy 1997-2000

2° Premio

Soluzione 1 : **1.Dd6!** (D~?) **Rxd6 2.Te2 Cf4** (Cxe7?)#

Soluzione 2 : **1.Cc6** (C~?) **Rxc6 2.Tf3 Ce7** (Cxf4?)#



H#2 A-B 8+12

23

PARRINELLO Mario

Orbit 2003/II

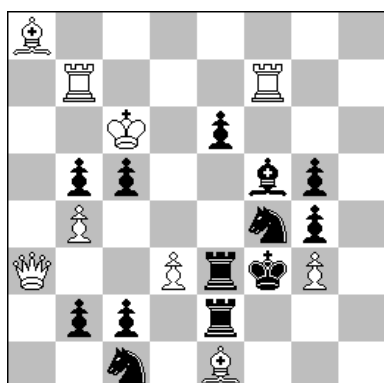
2° Premio

A - diagramma :

1.Ae4 Dxe3 2.Cxc3 Da7≠

Pc3 > d3 :

1.Ae7 Axe3 2.Cxd3 Ac1≠



H#2 A-B 9+13

24

PARRINELLO Mario

Problem Paradise 2000

2° Premio

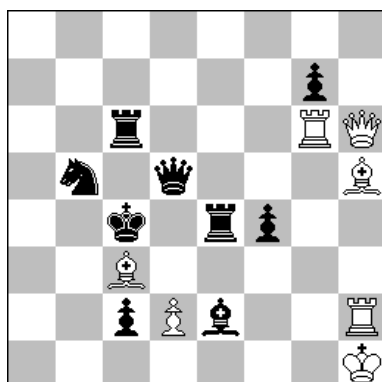
A - diagramma :

1.Axd3 Txb5 2.Axb5 Rxb5≠

Tb7 = C bianco :

1.Cxd3 Cxc5 2.Cxc5 Rxc5≠

9



H#2 2111 7+9

25

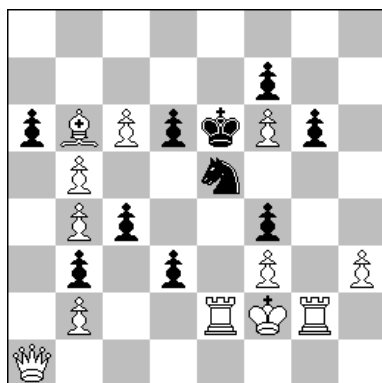
PARRINELLO Mario

Macedonian Problemist 2000

3° Premio

Soluzione 1 : **1.Txg6 Dxc6 2.Rd3 Axe2#**

Soluzione 2 : **1.Axh5 Txc5 2.Rc5 Txc6#**



H#2 A-B 12+10

26

PARRINELLO Mario

Orbit 2001

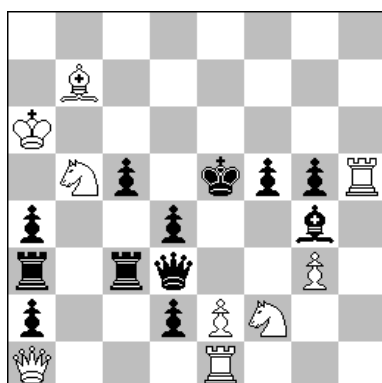
3° Premio

A - diagramma :

1.Rd5 Dh1 2.Cxf3 Tg5#

Pd6 > f5 :

1.Rxf6 Dxa6 2.Cxc6 Ad4#



H#2 2111 9+12

27

PARRINELLO Mario

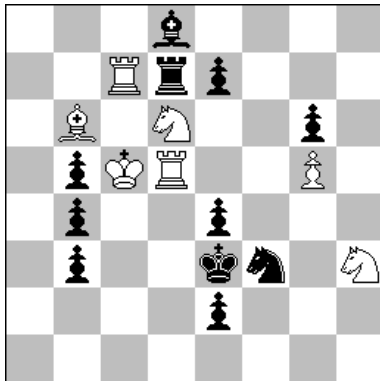
Orbit 2003/I

3° Premio

Soluzione 1 : **1.Dxe2 Th6 2.d3 Cxd3#**

Soluzione 2 : **1.Axe2 Dxa2 2.g4 Cxg4#**

10



H#2 2111 7+11

28

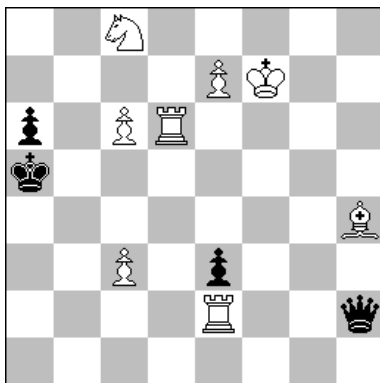
PARRINELLO Mario

Problem Paradise 2000

3° Premio

Soluzione 1 : **1.Txd6 Rxb4+ 2.Txb6 Tc3#**

Soluzione 2 : **1.Axc7 Rxb5+ 2.Axb6 Cc4#**



H#2 A-B-C 8+4

29

PARRINELLO Mario

StrateGems 2001

3° Premio

A - diagramma :

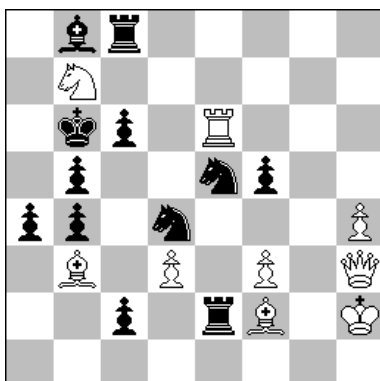
1.Dxh4 Ta2+(A) 2.Da4 Td5(B)#

Pc3 > b3 :

1.Dxe2 Td5+(B) 2.Db5 Ae1(C)#

Pc3 > c4 :

1.Dxd6 Ae1+(C) 2.Db4 Ta2(A)#



H#2 A-B 9+12

30

PARRINELLO Mario

Diagrammes 2000

4° Premio

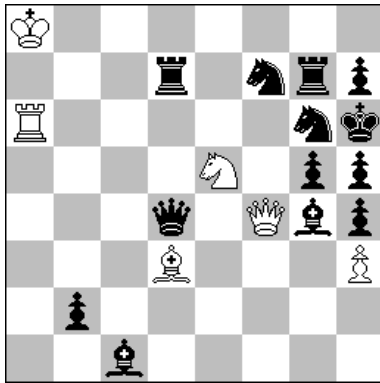
A - diagramma :

1.Rc7 Dg3 2.Cxb3 Te7#

B - Pb5 > d6 :

1.Rb5 Dxf5 2.Cxe6 Ac4#

11



H#2 2111 6+13

31

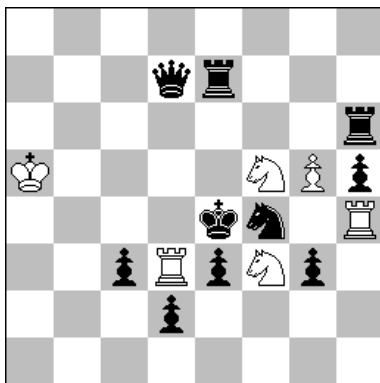
PARRINELLO Mario

Figueiredo MTy 1997-2000

4° Premio

Soluzione 1 : **1.Cd6 Df8 2.Ce7 Cf7#**

Soluzione 2 : **1.Ae6 Dxh4 2.Cf4 Cg4#**



H#2 3111 6+10

32

PARRINELLO Mario

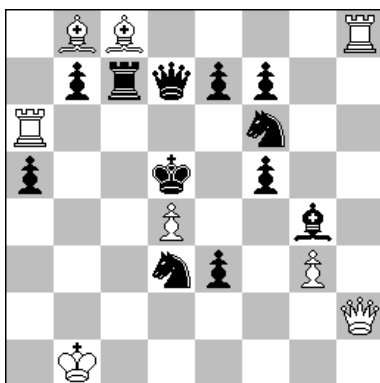
The Problemist 2002

4° Premio

Soluzione 1 : **1.Rxf3 Txd2 2.Cd5 Cd4#**

Soluzione 2 : **1.Rxd3 C5-d4 2.Ce6 Ce5#**

Soluzione 3 : **1.Rxf5 Td6 2.Cg6 Tf6#**



H#2 2111 8+12

33

PARRINELLO Mario

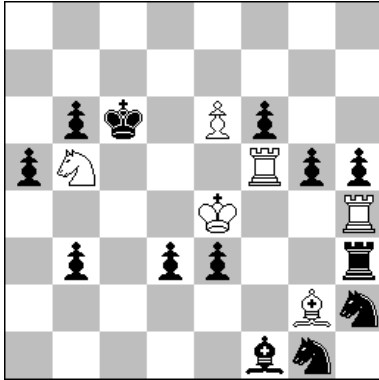
The Problemist 2001

4° Premio

Soluzione 1 : **1.Tc6 Th6 2.Re6 Da2#**

Soluzione 2 : **1.Dc6 Dh6 2.Rd6 Td8#**

12



H#2 A-B 6+13

34

PARRINELLO Mario

League of Macedonian Problemists 2001

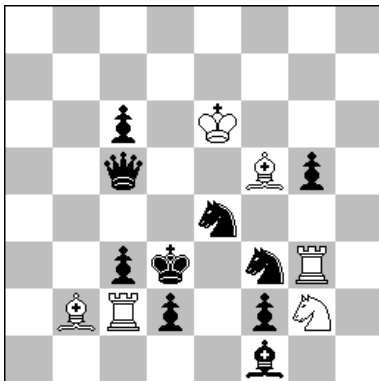
10° Posto

A - diagramma :

1.Txh4+ Rxe3+ 2.Te4 Axe4#

B - Rc6 > b4 :

1.Axg2+ Rxd3+ 2.Ae4 Txe4#



H#2 A-B 6+10

35

PARRINELLO Mario

StrateGems 2003 (versione)

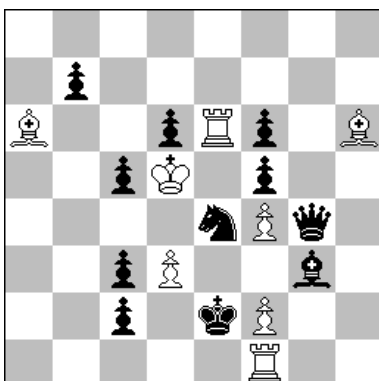
5° Premio

A - diagramma :

1.Rd4 Txc3 2.Cxc3 Tg4#

B - Ab2 > c1 :

1.Re2 Axd2 2.Cfxd2 Ag4#



H#2 A-B 8+11

36

PARRINELLO Mario

Witztum-50 JTy 2003

5° Premio

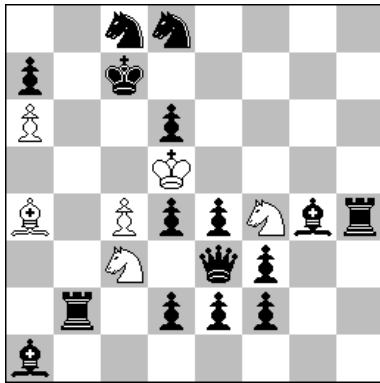
A - diagramma :

1.Rf3 Axb7 2.Cxf2 Rxd6#

B - Ce4 ⇌ Pd3 :

1.Rd2 Txd6 2.Cxf4 Rxc5#

13



H#2 A-B 6+16

37

PARRINELLO Mario

League of Macedonian Problemists 2001

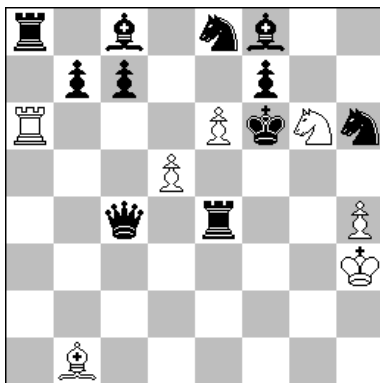
6° Posto

A - diagramma :

1.Dxc3 (Dxf4?) Rxe4 2.Tb8 Cd5#

B - Cc8 > b8 :

1.Dxf4 (Dxc3?) Rxd4 2.Ac8 Cd5#



H#2 A-B 7+11

38

PARRINELLO Mario

Wroclaw TTy 2003

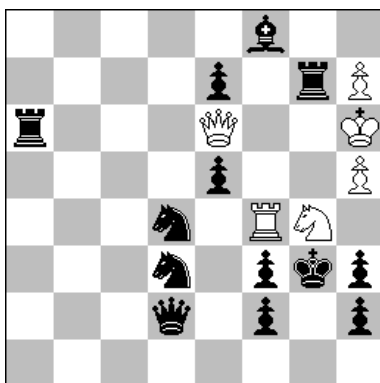
6° Premio

A - diagramma :

1.Tg4 e7+ 2.Cd6 e8C#

B - Te4 > e2 :

1.Cg4 exf7+ 2.Ad6 f8D#



H#2 2111 6+13

39

PARRINELLO Mario

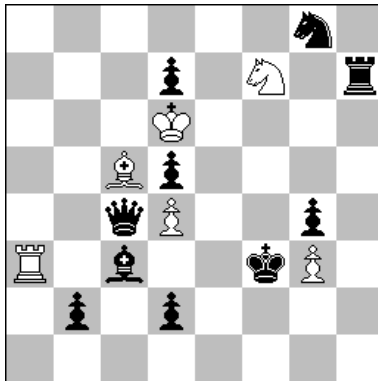
League of Macedonian Problemists 2001

7° Posto

Soluzione 1 : **1.Cxe6 Cf6 2.Cg5 Tg4#**

Soluzione 2 : **1.Cxf4 Ce3 2.Cg6 Dg4#**

14



H#2 A-B 6+10

40

PARRINELLO Mario

League of Macedonian Problemists 2001

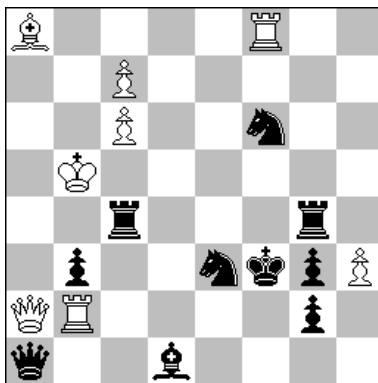
8° Posto

A - diagramma :

1.Re4 Rc7 (Rxd7?) 2.Ab4 (Aa5?) Cd6#

B - g3 = Cg3 bianco :

1.Rf4 Rxd7 (Rc7?) 2.Aa5 (Ab4?) Ad6#



H#2 A-B 8+10

41

PARRINELLO Mario

Moskovskaya Matreshka Ty Halkidiki 2004

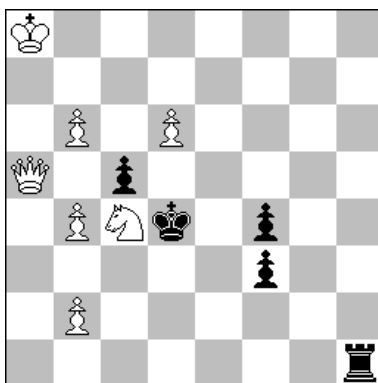
Premio Speciale

A - diagramma :

1.Tc-f4 Txb3 (Dxb3?) 2.Cd7 cxd7#

B - Cf6 ⇔ Pc6 :

1.Tg-e4 Dxb3 (Txb3?) 2.Ce7 fxe7#



H#2 A-B-C 7+5

42

PARRINELLO Mario

6° WCCT 1996-2001

27° Posto

A - diagramma :

1.Te1 Ce5 2.Te4 Dxc5# (1.Td1? Cd2 2.?? Dxc5#)

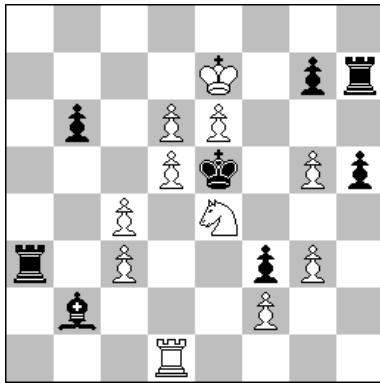
B - Da5 > a3 :

1.Th5 Cd2 2.Td5 Dc3# (1.Te1? Ce3 2.?? Dc3#)

C - Da5 > g4 :

1.Td1 Ce3 2.Td3 Dxf4# (1.Th5? Ce5 2.?? Dxf4#)

15



H#2 A-B-C 11+8

43

PARRINELLO Mario

6° WCCT 1996-2001

4° Posto

A - diagramma :

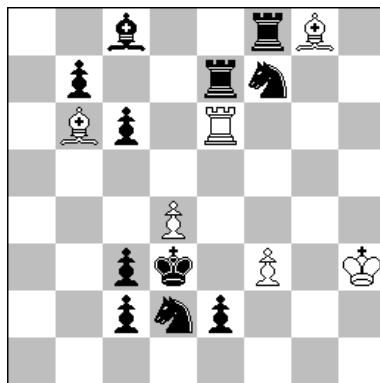
1.Ta5 Cf6 (Cc5?, Cd2?) **2.Txd5 Txd5#**

B - Td1 > b5 :

1.Th6 Cd2 (Cf6?, Cc5?) **2.Txe6 dxe6#**

C - Td1 > f8 :

1.Ac1 Cd5 (Cd2?, Cf6?) **2.Af4 gxf4#**



H#2 A-B 6+11

44

SIMONI Francesco

Best Problems 2004

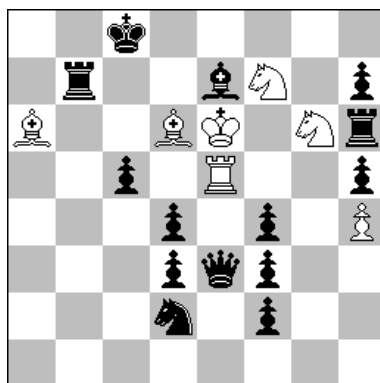
1° Premio

A - diagramma :

1.Ce5 dxe5 **2.Tf5** (Td7?) **Td6#**

B - Pd4 > c5 :

1.Cd6 cxd6 **2.Td7** (Tf5?) **Te3#**



H#2 2111 7+14

45

SIMONI Francesco

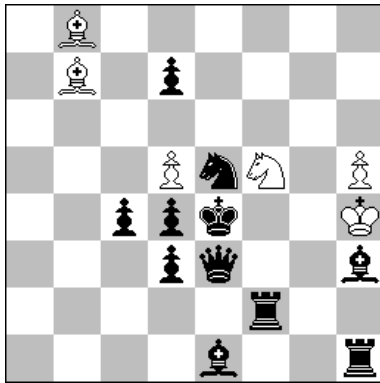
L'Italia Scacchistica 2003

2° Premio

Soluzione 1 : **1.Ce4 Txh5** (Txc5?) **2.Txh5 Cxe7#**

Soluzione 2 : **1.Af6 Cxf4** (Ce7?) **2.Dxf4 Txc5#**

16



H#2 2111 6+11

46

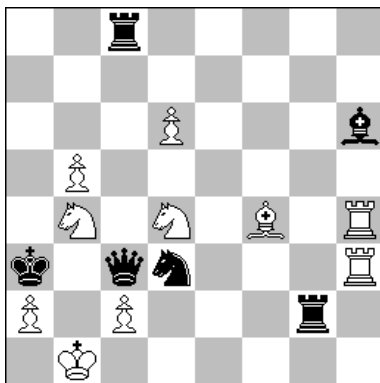
SIMONI Francesco

Problem Paradise 2002

1° Premio

Soluzione 1 : **1.Cf7 Ah2 (Ag3?) 2.Axf5 (Tf3+?) d6#**

Soluzione 2 : **1.Cg4 Ag3 (Ah2?) 2.Tf3 (Axf5+?) Cd6#**



H#2 2111 10+6

47

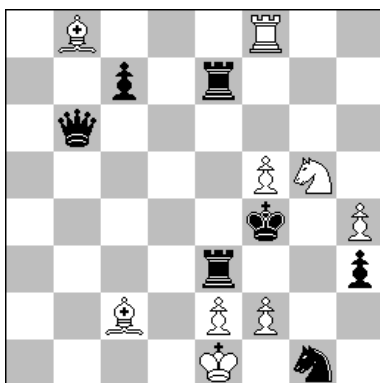
SIMONI Francesco

Sabra TTy Halkidiki 2004

3° Premio

Soluzione 1 : **1.Dxd4 Cc6 2.Dxd6 Axd6#**

Soluzione 2 : **1.Cxb4 Ad2 2.Cxc2 Cxc2#**



H#2 2111 9+7

48

SIMONI Francesco

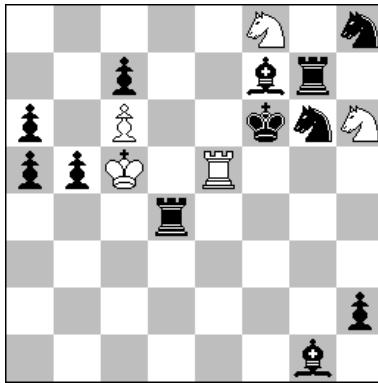
Torre & Cavallo Scacco! 2004

1° Premio

Soluzione 1 : **1.T7-e5 Tg8 2.c6 Ce6#**

Soluzione 2 : **1.T3-e5 Ad1 2.c5 e3#**

17



H#2 2111 5+12

49

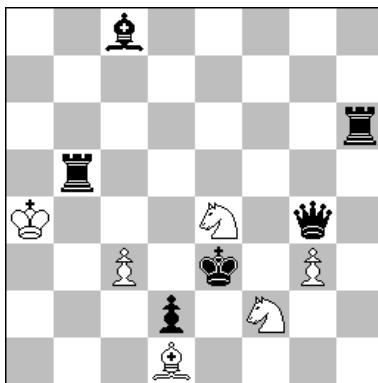
SIMONI Francesco

Telescacco 2000 2003

1° Premio

Soluzione 1 : **1.Ad5 Cf7 2.Cxf7 Cd7#**

Soluzione 2 : **1.Cf4 Cg6 2.Cxg6 Cg4#**



H#2 2111 6+6

50

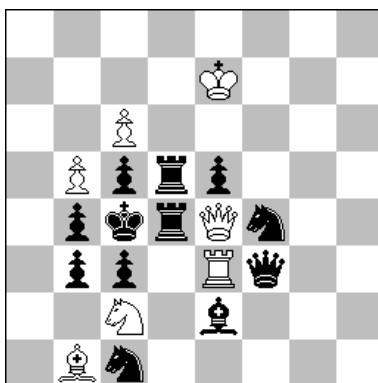
SIMONI Francesco

The Ural Problemist 2003

1° Premio

Soluzione 1 : **1.Dd7 Cc5 (Cf6?) 2.Te6 Cg4#**

Soluzione 2 : **1.De6 Cf6 (Cc5?) 2.Tf5 C6-g4#**



H#2 3111 7+12

51

CUPPINI Alessandro

W. Rosolak-65 Jty 2001-2002

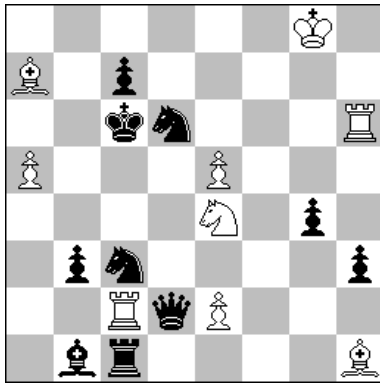
4° Premio

Soluzione 1 : **1.bxc2 Txc3+ 2.Rxc3 Dxc2#**

Soluzione 2 : **1.Dxe3 Dxd5+ 2.Rxd5 Cxe3#**

Soluzione 3 : **1.Dxe4 Cxd4 2.Rxd4 Txe4#**

18



H#2 2111 9+10

52

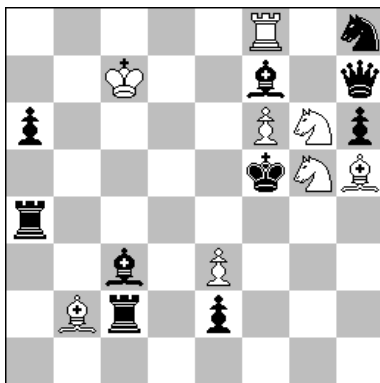
SIMONI Francesco

Problemblad 2004

1° Premio

Soluzione 1 : **1.Dxh6 Ag1 2.Cd-b5 Cf6 (Cc5?)#**

Soluzione 2 : **1.Txc2 Ad4 2.Cc-b5 Cc5 (Cf6?)#**



H#2 2111 8+10

53

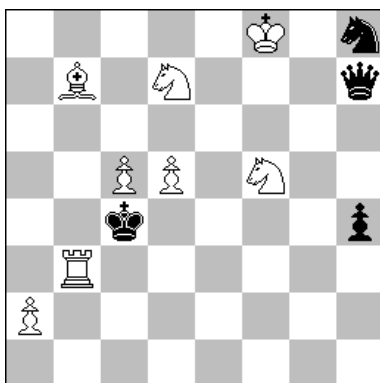
SIMONI Francesco

The Problemist 2004

1° Premio

Soluzione 1 : **1.Dg8 Ac1 2.Ac4 e4#**

Soluzione 2 : **1.Td2 Tg8 2.Ab4 Ch4#**



H#2 3111 8+4

54

TRAVASONI Marco

Problemas 2000

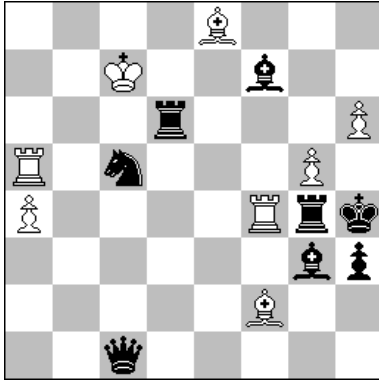
5° Premio

Soluzione 1 : **1.Dg7+ Re8 2.Dd4 Cd6#**

Soluzione 2 : **1.De7+ Rg8 2.Dxc5 Ce5#**

Soluzione 3 : **1.Dg8+ Re7 2.Dxd5 Aa6#**

19



H#2 A-B 8+8

55

PARRINELLO Mario

The Problemist 2004

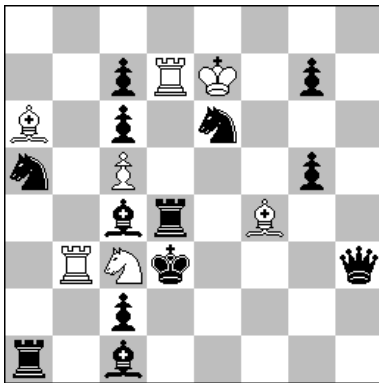
2° Premio

A - diagramma :

1.Ac4 Axc5 2.Af2 Axf2#

B - Dc1 > g7 :

1.Cd7 Txf7 2.Tf4 Txf4#



H#2 2111 7+13

56

PARRINELLO Mario

Probleemblad 2003

2° Premio

Soluzione 1 : **1.Cd8 Ad6 2.Tg4 Af4#**

Soluzione 2 : **1.Cb7 Tb5 2.Aa2 Tb3#**