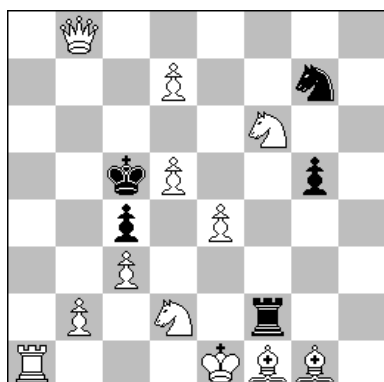


# 1



S#6

12+5

## 1

### ARMENI Alberto

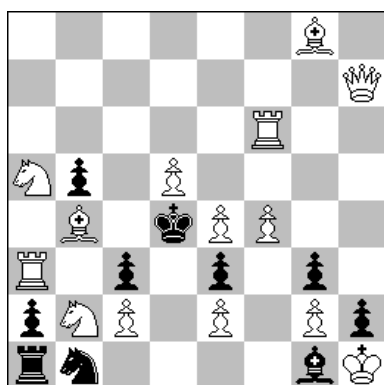
*Suomen Shakki 2004-2005*

**1° Premio**

**1.Ce8/Ce6/Cf5/Ch5?**, Cxe8/dxe6/xf5/Cxh5!

**GR :** **1.d8C!** (zz)

1... Ce6/Cf5/CCh5/Ce8; 2.dxe6/xf5/Cxh5/Cxe8!  
cui segue 2... g4; 3.0-0-0, g3; 4.Cb1, g2; 5.b4+,  
cxb3 e.p.; 6.Ab5, b2#



S#3

14+10

## 2

### CUPPINI Alessandro

*Quartz 2001-2002*

**2° Premio**

**1.Cb-c4?**

1... C ~ ; 2.Da7+ (A), Rxe4; 3.Dxe3+, Axe3#

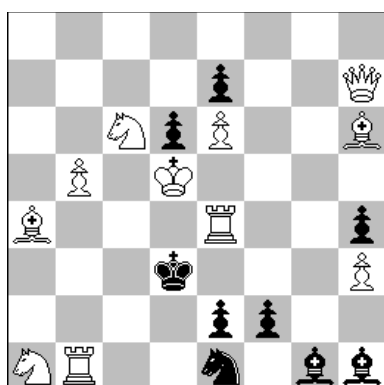
1... Af2; 2.Cc6+ (B), Rxc4; 3.Txc3+, Cxc3#

ma 1... bxc4!

**GR :** **1.Cd1!**

1... C ~ ; 2.Cc6+ (B), Rc4; 3.Cxe3+, Axe3#

1... Af2; 2.Da7+ (A), Rxe4; 3.Cxc3+, Cxc3#



S#4

11+9

## 3

### CUPPINI Alessandro

*V. Zheltonotzkho-64 JTy 2003-2006*

**1° Premio**

1... Cf3; 2.Tf4+, ~ ; 3.Dd3+, Rxd3; 4.Txf3+, Axf3#

1... Cg2; 2.Txh4+, Rc3; 3.Dg7+, Rd3; 4.Dg3+, Ce3#

**1.Dh8?** (2.Ac2+ ...), Cg2; 2.Ce5+, **dxe5!** (2... Rc3; 3.Cc4+, Rd3; 4.Te3+, Cxe3#)

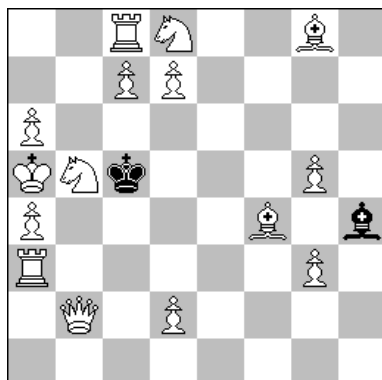
**GR :** **1.Dg7!** (2.Ac2+, Cxc2; 3.Td1+, exd1~; 4.Cb4+, Cxb4#)

1... Cf3; 2.Te3+, Rd2; 3.Td3+, Rxd3; 4.Dd4+, Cxd4#

1... Cg2; 2.Td4+ (1°), Rc3; 3.Txh4+, Rd3; 4.Dg3+, Ce3#

(1°) - 2.Ce5+, dxe5 (2... Rc3; 3.Cc4+, Rd3; 4.Te3+, Ce3#)! - 2.Te3+?, Rd2!

# 2



S#6

15+2

## 4

**CUPPINI Alessandro**

*Ty 60° Ann. Vittoria in Bielorussia 2004*

**4° Premio**

**1.Ta8?**, Axc5; 2.Ae3+, Axe3; 3.d4+, Axd4; 4.Tc3+, Axc3; 5.Db4+, Axb4#

ma 1... Axc3!

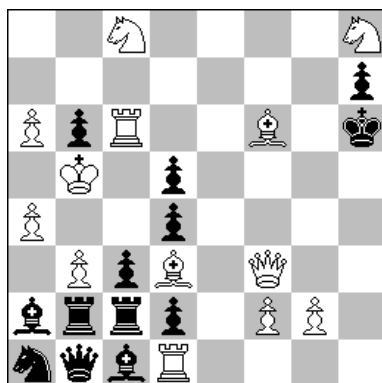
**1.Cd6?**, Axc3; 2.Cf5, Ah4; 3.d3, Axc3; 4.Ae3+, Axe3; 5.Dd4+, Axd4; 6.Tc3+, Axc3#

ma 1... Axc3!

**GR :** **1.Td3!** (zz)

1... Axc3; 2.Ad6+, Axd6; 3.Td5+, Rc4; 4.Ca3+, Axa3; 5.Td6+, Rc5; 6.Db4+, Axb4#

1... Axc3; 2.Ae3+, Axe3; 3.Cb7+, Rc6; 4.Ca7+, Axa7; 5.Cd8+, Rc5; 6.Db6+, Axb6#



S#5

13+13

## 5

**CUPPINI Alessandro**

*Ty 60° Ann. Vittoria in Bielorussia 2004*

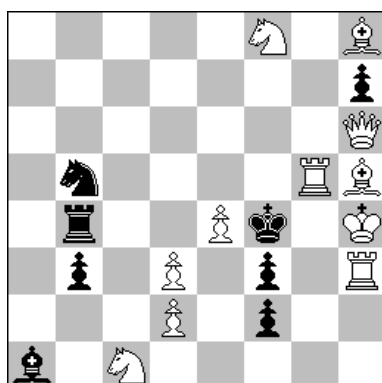
**2° Premio**

**1.Dg4?**, Axb3! **1.Dxd5?**, Txb3+! **1.Ae2?**, d3! **1.g3?**, Cxb3!

**GR :** **1.Ce7!**

1... Axb3; 2.Df4+, Rh5; 3.Dh2+, Rg4; 4.Dh3+, Rf4; 5.Cxd5+, Axd5#

1... Cxb3; 2.Dg4, Da1; 3.Ag5+, Rg7; 4..Ah6+, Rxh8; 5.Dxd4+, Cxd4#



S#4

11+8

## 6

**CUPPINI Alessandro**

*Pat a Mat 2004-2005*

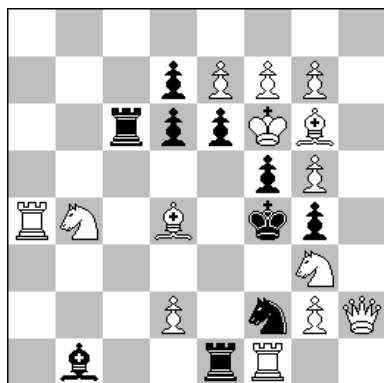
**4° Premio**

**GR :** **1.e5!** (2.Cg6+, hxg6; 3.Tf5+, Rxf5; 4.Ag4+, Txg4#)

1... Cd4; 2.Tg6+, Rf5; 3.Tf6+, Rxe5; 4.Dg5+, Cf5#

1... Ad4; 2.Ce2+, fxe2; 3.Tg2+, Rf5; 4.Txf2+, Axf2#

# 3



S#3

14+10

## 7

**CUPPINI Alessandro**

*E. Migdal-50 JTy 2004*

**1° Premio**

**1.Ch1/Ce4/Cxf5+?**, Re4 (1... g3?; 2.Dxg3+!, Re4; 3.Dg4+)!

**1.Cd5+?**, exd5!; 2.Ac5+, d4 (2... Ae4/Te4; 3.Axd6+,Txd6#)!

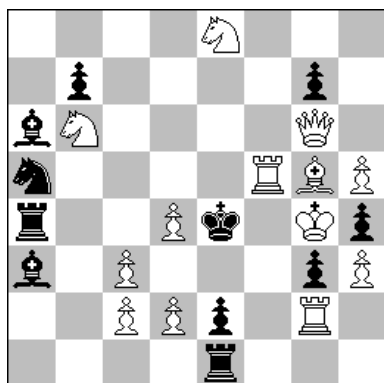
**GR :** **1.Dh4!** (2.Ch5+, Re4; 3.Dxg4+, Cxg4#

1... Te4; 2.Cd5+**A**, exd5; 3.Ae5+**B**, dxe5#

[2.Ae5+**B?**, Txe5! (2... dxe5; 3.Cd5-**A**#)]

1... Ae4; 2.Ae5+**B**, dxe5; 3.Cd5+**A**, exd5#

[2.Cd5+**A?**, Axd5! (2... exd5; 3.Ae5-**B**#)]



S#4

13+11

## 8

**CUPPINI Alessandro**

*C.S. Pavlovic MTy 2004*

**5° Premio**

**GR :** **1.d5!** (2.Cf6+, gxf6; 3.Te5+, Rxe5+; 4.Af4+, Txf4#)

1... Ac4; 2.Tf-f2+, Re5; 3.Txe2+, Txe2; 4.Txe2+, Axe2#

1... Cc4; 2.Tf6+, Re5; 3.Cd7+, Rxd5; 4.Df5+, Ce5#

1... Ab4; 2.Tf7+, Re5; 3.Te7+, Axe7+; 4.Af4+, Txf4#