



Andon Petkov (1914-1944)

## ANDON PETKOV - 100 MT - 2015 AWARD

Judge IGM Petko Petkov

The memorial tournament ANDON PETKOV 100 MT, announced in 2014 in memory of my father Andon Petkov (1914-1944), was met with exceptional interest. I received a total of 78 problems by 32 authors from 12 countries.

I note with great appreciation and satisfaction that among the participants are many of the most famous authors of fairy problems in the world. The dozens of great compositions presented reveal the beauty of the genre HS#. The competition was very strong in both sections and I was very embarrassed when determining the order of the problems to receive prizes, HMs and Commendations.

*The tournament was organized in memory of my father Andon Petkov (a trader by profession), who was a victim of the totalitarian regime established in my country after September, 1944. I do not remember my father. I only know that he was a great fan of modern art – literature, music, painting. In his diaries from 1942-1943, I read some valuable thoughts that I remember to this day as a fairy composer. In 1942 he wrote: "To create a modern opus – it means walking in new and unfamiliar paths that exist only in your imagination".*

*In that spirit I was also educated by my mother Danka Petkova (1920-1993) – a graduate of the Romanian College, who was an admirer of modern French music and painting.*

*In such an atmosphere and with such thoughts I had fully abandoned practical chess by 1959 (until then I was as a junior player - candidate - master) and began very actively to compose fairy problems. My first counselors and teachers were the masters who were famous at that time: Gerchard Jensch, Jan Hartong, Albert Kniest, Peter Kniest, Wilhelm Hegemann, Antonio Arguelles, Jean Bertin, etc...*

(My deep gratitude to Geoff Foster for language correction!)

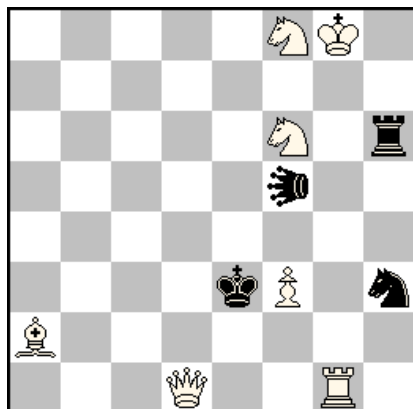
**PARTICIPANTS:** Agostini Valerio (Italy), Armeni Alberto (Italy), Balasubramaniam S.K. (India), Bart Michael (Germany), Comay Ofer (Israel), Crisan Vlaicu (Romania), Dietrich Stephan (Germany), Ellinghoven Bernd (Germany), Garofalo Antonio (Italy), Gockel Hubert (Germany), Golha Jan (Slovakia), Kekely Lubos (Slovakia), Kochulov Igor (Russia), Kratschmer Ralf (Germany), Kuhn Rainer (Germany), Lorinc Juraj (Slovakia), Mikitovics Janos (Hungary), Mlinka Karol (Slovakia), Mueller Dieter (Germany), Novomeski Daniel (Slovakia), Pacht Franz (Germany), Parrinello Mario (Italy), Predrag Nikola (Croatia), Rallo Vito (Italy), Rehm Hans Peter (Germany), Rittirsch Manfred (Germany), Shifrin Semion (Israel), Solja Kenneth (Finland), Stun Jaroslav (Slovakia), Trommler Sven (Sweden), Vysotska Julia (Latvia), Widlert Kjell (Sweden).

**Summary:** 32 participants from: 12 lands: Croatia, Finland, Germany, Hungary, India, Israel, Italy, Latvia, Romania, Russia, Slovakia, Sweden.

**78 original problems:** for SECTION A - HS#(HS=, etc) problems up to 3 moves = 36 problems; for SECTION B - HS# (HS=, etc) problems over 3 moves = 42 problems.

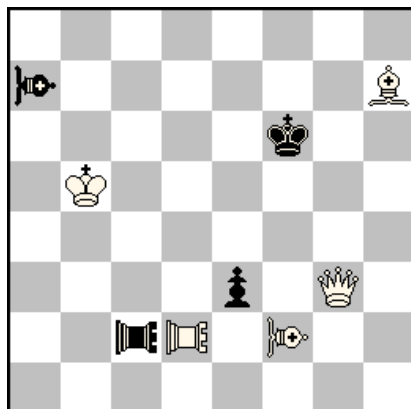
# SECTION "A"

**H.P.Rehm & K.Widlert &  
B.Ellinghoven**  
(Germany/Sweden/Germany)  
Andon Petkov -100 MT - 2015  
Section "A"  
1<sup>st</sup> Prize



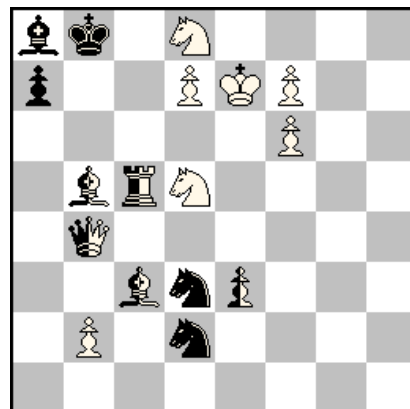
HS#3    2 solutions    (7+4)  
♣ = Hurdle-Colourchanging  
LEO

**Mario Parrinello**  
(Italy)  
Andon Petkov -100 MT - 2015  
Section "A"  
2<sup>nd</sup> Prize



HS#3    b) wRh7    (5+4)  
KoBul Kings  
♣♠ = Bishop-Locust  
♠♠ = Rook-Locust

**Igor Kochulov**  
(Russia)  
Andon Petkov -100 MT - 2015  
Section "A"  
3<sup>rd</sup> Prize



HS#2,5    Duplex    (7+5+5)  
Take & Make

**1<sup>st</sup> Prize - Hans Peter Rehm (Germany) & Kjel Widlert (Sweden) & Bernd Ellinghoven (Germany)** - A very interesting Meredith, which shows the possibilities of a new and little-known piece in practice: Hurdle-Colourchanging LEO (Another name can be "Andernach-LEO", by analogy with the already well-known piece Andernach Grasshopper). Of course, the Hurdle-Colourchanging LEO (I use the symbol CLE) is not a not a typical hurdle-piece, but has great opportunities to move on the board and it is particularly important!

Here we see a unique special combination of white anti-critical moves and black critical moves of CLE in combination with cycle of white moves AB-BA: **I. Rg1-g5! (A) CLEf5-d7!! 2.Ba2-e6 (B) Sh3-f4 3.Sf6-g4+ CLEd7xg4 (b.Be6)#.** Thematic try: 1.Rg7? but after 3...CLExg4 (b.Be6)+ follows 4.Rf7!!; **II. 1.Ba2-e6! (B) CLEf5-h5!! 2.Rg1-g5 (A) Sh3-f2 3. Sf6-d5+ CLEh5xd5( b.Rg5)#.** Thematic try: 1.Bf7? but after 3... CLExd5 (b.Rg5)+ follows 4.Bg6!!  
A great work by this world-famous trio of authors!

(Note: This problem is currently only solved correctly with the program WinChloe – Popeye shows bugs!)

**2<sup>nd</sup> Prize - Mario Parrinello (Italy)** - Another Meredith from the super class! After beautiful sacrifices of the white Queen, the wK (transformed into rQ) shows wonderful activity. There follow two new phases of transformation of the white and black royal pieces, combined with construction of reciprocal fairy-batteries and interchange of function of black and white pieces from the Locust -family!

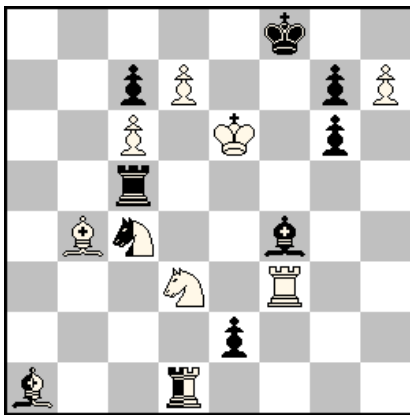
I think this is one of the most beautiful demonstrations of the excellent fairy condition KoBul Kings! Amazing economy – only 9 pieces on the board! **a) 1.Qg3-g7+ Kf6xg7[b5=rQ] 2.rQb5-b7+ e3xd2[b7=rLR] 3.Bh7xc2[g7=rLR]+ LBaxf2-g1[b7=rLB]#;** **b) 1.Qg3-g6+ Kf6xg6[b5=rQ] 2.rQb5-d3+ e3xf2[d3=rLB] 3.Rh7xa7[g6=rLB]+ LRC2xd2-e2[d3=rLR]#.**

**3<sup>rd</sup> Prize - Igor Kochulov (Russia)** - This is also a problem of the highest originality! In the initial position two powerful neutral batteries with rear piece nQ are directed against both

kings: nBb5/nQb4 and nRc5/nQb4. In both phases this thematic trio of pieces demonstrates very complex double transformations of batteries: in 1st Phase: transformation of the nRc5/nQb4 battery into nRb4/nQa3 battery + creation of nBb5/nRb4 battery; 2nd Phase: transformation of the nBb5/nQb4 battery into nBb4/nQb3 battery + creation of nRc5/nBb4 battery. The final of every phase is a duel between double cross-checks from both sides!! A unique concept!

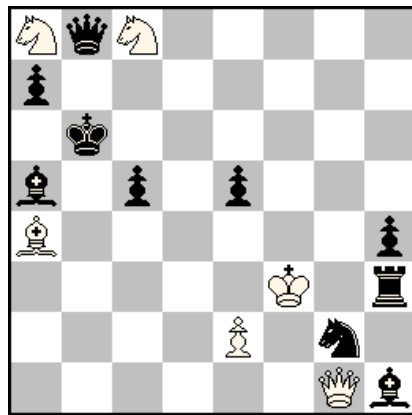
**1st Phase:** 1...nQb4-a3 2.nPe3-e4 nRc5xc3-b4 3.nBb5xd3-f4+ nRb4xe4-e5#;  
**2nd Phase:** 1...nQb4-b3 2.nPe3-e2 nBb5xd3-b4 3.nRc5xd5-e3+ nBb4xc3-e5#

**Igor Kochulov**  
 (Russia)  
 Andon Petkov -100 MT - 2015  
 Section "A"  
 4<sup>th</sup> Prize



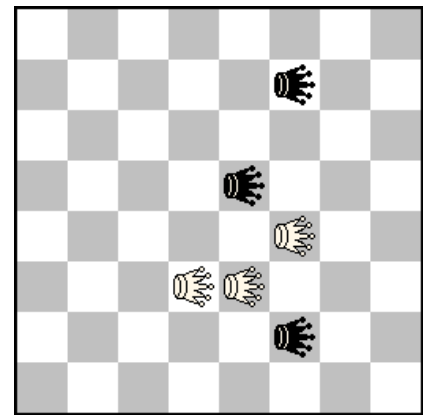
HS#2,5 2 solutions (7+7+3)  
 Take & Make

**Michael Barth**  
 (Germany)  
 Andon Petkov -100 MT - 2015  
 Section "A"  
 5<sup>th</sup> Prize



HS#3 b)Sg2→g3 (6+10)  
 Anti-Circe

**Jaroslav Stun**  
 (Slovakia)  
 Andon Petkov -100 MT - 2015  
 Section "A"  
 6<sup>th</sup> Prize



HS#3 3 solutions (3+3)  
 Republican Chess  
 ♖♜ = Moose

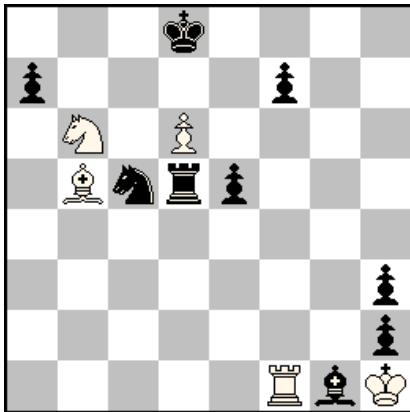
**4<sup>th</sup> Prize - Igor Kochulov (Russia)** - Reciprocal change of functions of three duos of thematic pieces: Rf3/Bb4, nRd1/nBa1 and Rc5/Bf4 (passive form). A very interesting moment is that White plays in both phases on the squares d5 and e5 through 4 different Take&Make ways: Rxf4-e5/Sxc5-d5 (I sol), Sxf4-e5/Bxc5-d5 (II sol). In every solution one of these moves is a block move, the other one prepares the formation of a special T&M battery that gives mate through double check, capturing the white piece with Annihilation motive. An excellent and very surprising creation of reciprocal batteries between nBa1 and nRd1. Another Kochulov super-problem! I.1...nSc4-b2 2.Rf3xf4-e5 nBa1xb2-c4+ 3.Sd3xc5-d5+ nRd1xd5-e7#; II.1...nSc4-d2 2.Bb4xc5-d5 nRd1xd2-e4+ 3.Sd3xf4-e5+ nBa1xe5-f7#.

**5<sup>th</sup> Prize - Michael Barth (Germany)** - An interesting problem that shows a nonstandard interpretation of the Umnov theme in the Anti-Circe genre! The main actors in the implementation of this theme are Qb8, Sa8 and Sc8. But the specific thematic battery is realised with the help of another group of thematic pieces: Qg1, Sg2, Bh1 and Rh3. Unfortunately, the lack of complete thematic identity between the two phases is a small minus. The second solution seems better because after 2...Se4 3.Qg4+ we also have inclusion of w.Q. This motive is not seen in the 1st solution but it is obviously impossible to realize it. a) 1.Sc8-d6 Qb8-c8 2.Ba4-b5 Sg2-e3 3.Qg1-f2+ Qc8xa8[bQa8->d8]#; b) 1.Sa8-c7 Qb8-a8+ 2.Ba4-c6 Sg3-e4 3.Qg1-g4+ Qa8xc8[bQc8->d8]#.

**6<sup>th</sup> Prize - Jaroslav Stun (Slovakia)** - A very elegant problem with paradoxical initial position in which there are only 6 fairy pieces! The echo play is beautiful and surprising, although there is no strategy or model mates. I.1.Me3-f6 Mf2-g5 2.Mf4-e7 Mf7-d6 3.Md3-

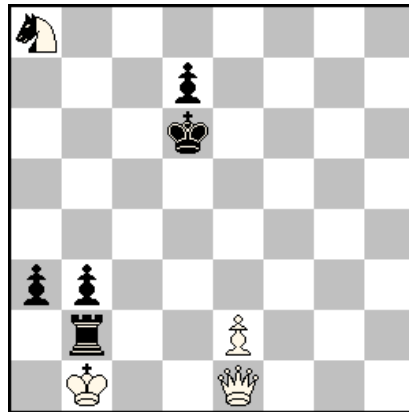


**S.K. Balasubramanian  
(India)**  
Andon Petkov -100 MT - 2015  
Section "A"  
2<sup>nd</sup> Honorable Mention



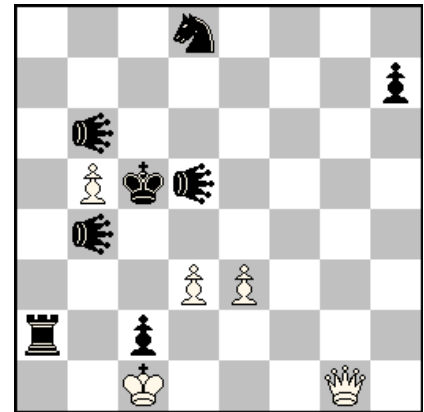
HS#2,5 2 solutions (5+9)  
Take & Make

**Hubert Gockel  
(Germany)**  
Andon Petkov -100 MT - 2015  
Section "A"  
3<sup>rd</sup> Honorable Mention



HS#3 b) nQa8 (3+5+1)  
Annan Chess

**Dieter Mueller & Franz Pachl  
(Germany)**  
Andon Petkov -100 MT - 2015  
Section "A"  
4<sup>th</sup> Honorable Mention



HS#2 3 solutions (5+8)  
♞=Double-Grasshopper

**2<sup>nd</sup> Honorable Mention - S.K. Balasubramanian (India)** - Interesting sacrifices of the black Knight which is captured by the white Rook on "e6" and "a6", combined with line-openings for Rd5 and Bg1. Of course, we have here also exchange of function between two pairs of pieces: Rd5/Bg1 and Bb5/Sb6 (passive) But I think there is a minus – in fact, on the white side only the rook plays actively. It would be better to put the wR on "g3" in the initial position (C+). I. 1...Sc5-e6 2.Rf1-f6 Bg1xb6-a8 3.Rf6xe6-f8+ Rd5xb5-e8#; II. 1...Sc5-a6 2.Rf1-a1 Rd5xb5-f1 3.Ra1xa6-b8+ Bg1xb6-c8#.

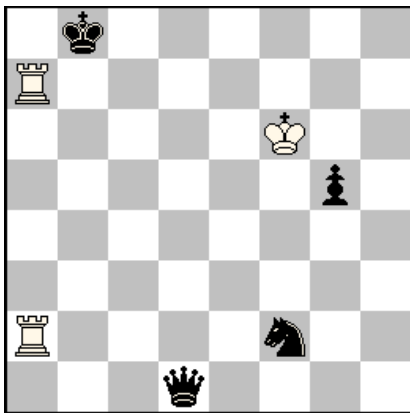
**3<sup>rd</sup> Honorable Mention - Hubert Gockel (Germany)** – A nonstandard problem with solutions that are not identical thematically (ANI - type) , but with typical effects for Annan Chess. Very interesting are the moves of w.Pe2 in both phases! a) 1.e2-d1 nSa8-b6 2.Qe1-c3 nSb6-c4 3.Qc3-d3+ nSc4-d2#; b) 1.e2-e8=R nQa8-a5 2.Re8-e4 nQa5-e5 3.Qe1-g3 a3-a2 #.

**4<sup>th</sup> Honorable Mention - Dieter Mueller & Franz Pachl (Germany)** - A very enjoyable problem, though not of a lengthy format. The Umnov theme here is realized in combination with cyclic interchange of functions of three DGs and threefold play of black K/DG batteries. In my opinion here a small minus is the repetition of DG moves to "h8". I. 1.Qg1-g6 DGb6-h8 2.Qg6-b6+ Kc5xb6#; II. 1.Qg1-g4 DGb4-h8 2.Qg4-b4+ Kc5xb4#; III. 1.Qg1-g2 DGd5-h8 2.Qg2-d5+ Kc5xd5#.

**5<sup>th</sup> Honorable Mention - Dieter Mueller (Germany) & Juraj Lorinc (Slovakia)** - Surprising and nice Echo finales created with only 7 pieces on the board using special features of Strict FileCirce. I.1.Kf6-e7 Sf2-e4 2.Ra2-f2 Qd1-h5 3.Rf2-f8+ Qh5-e8#; II.1.Kf6-g7 Sf2-g4 2.Ra2-h2 Qd1-b3 3.Rh2-h8+ Qb3-g8#.

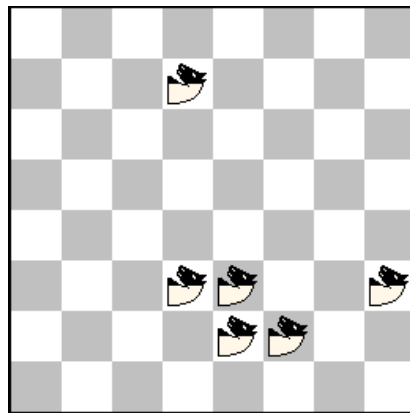
**Commendation - Jaroslav Stun (Slovakia)** - In a paradoxical position, created only with 6 neutral MAO-Riders, the author demonstrates, albeit on a "short distance", two interesting finales. I.1.nMRe2-a4 nMRa4-g7 2.nMRe3-f5[+bKf4]+ Kf4-f3[+wKe5]#; II. 1.nMRe3-g7 nMRe2-d4 2.nMRd4-f5[+bKe5]+ Ke5-d5 [+wKf4]#.

**Dieter Mueller &  
Juraj Lorinc  
(Germany / Slovakia)**  
Andon Petkov -100 MT - 2015  
Section "A"  
5<sup>th</sup> Honorable Mention



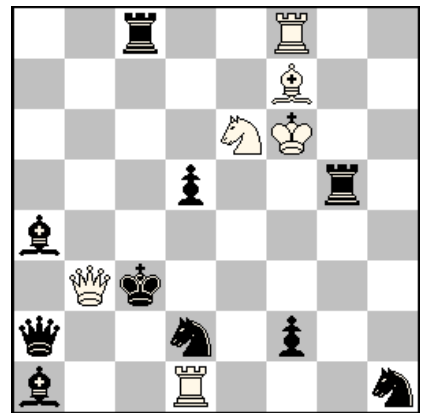
HS#3 2 solutions (3+4)  
File - Circe - Strict

**Jaroslav Stun  
(Slovakia)**  
Andon Petkov -100 MT - 2015  
Section "A"  
Commendation



HS#2 2 solutions (0+0+6)  
Republican Chess  
♞=Maorider

**Manfred Rittirsch  
(Germany)**  
Andon Petkov -100 MT - 2015  
Section "A"  
Commendation

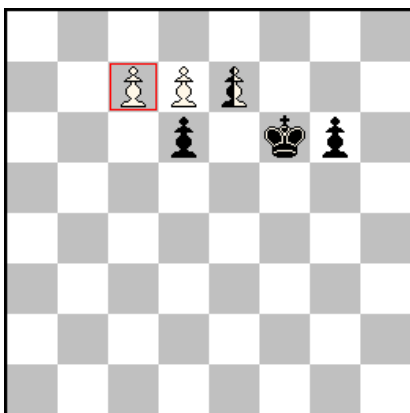


HS#2 2 solutions (6+10)  
Anti - Circe

**Commendation - Manfred Rittirsch (Germany)** - Good play of the white Rooks which block 4 thematic squares in Anti-circe style. I.1.Rf8-d8 Ba4-e8 2.Rd1-f1 + Sd2xb3[bSb3->g8] #; II. 1.Rf8-g8 d5-d4 2.Rd1-g1 + Qa2xb3[bQb3->d8] #.

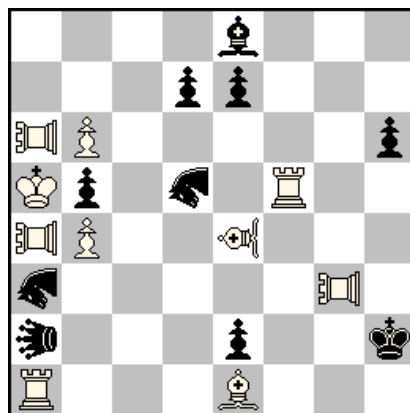
**Commendation - Karol Mlinka (Slovakia)** - Three solutions that demonstrate a "Mixed AUW" with finales where mate is given by the black King. Unfortunately there is not enough thematic identity between all phases. I.1.rPc7-c8=rQ Kf6xe7 2.rQc8-h8=rS Ke7-f8 3.d7-d8=Q+ Kf8-g7#; II. 1.nPe7-e8=nR nRe8-g8=nQ 2.d7-d8=R Kf6-e7 3.Rd8xd6=Q+ Ke7xd6#; III. 1.nPe7-e8=nB Kf6-e6 2.nBe8xg6=nR+ nRg6-g5=nQ 3.d7-d8=S+ Ke6-d7#.

**Karol Mlinka  
(Slovakia)**  
Andon Petkov -100 MT - 2015  
Section "A"  
Commendation



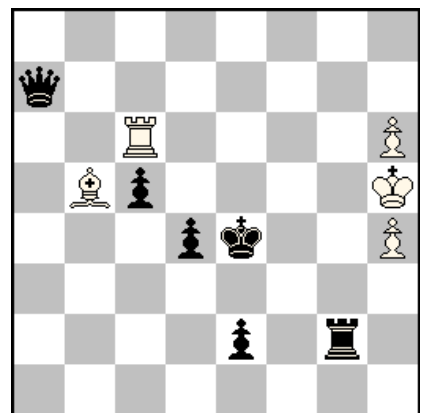
HS#3 3 solutions (2+3+1)  
Chameleon Chess  
Royal Pc7

**Semion Shifrin  
(Israel)**  
Andon Petkov -100 MT - 2015  
Section "A"  
Commendation



HS#3 b) Be8->g8 (10+10)  
Annan Chess; Take & Make  
♞=NAO; ♝=LEO  
♞=VAO; ♝=PAO

**Alberto Armeni  
(Italy)**  
Andon Petkov -100 MT - 2015  
Section "A"  
Commendation



HS#3 2 solutions (5+6)  
Andernach



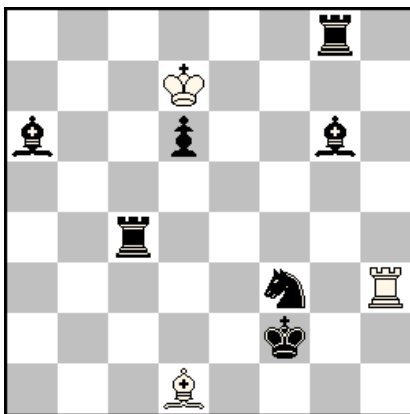
**Commendation - Semion Shifrin (Israel)** - A very ambitious idea - combination of the difficult conditions "Take&Make" and "Annan Chess" with activity of both Kings. There are a lot of other interesting motives but the construction is rather heavy with compromises concerning economy of material. a) 1.Rf5-f3 NAa3-g6+ 2.Ka5xd5-f4 Kh2xg3-g5 3.Ra1xa2-d5+ NAg6-e5#; b) 1.Ra1-d1 NAa3-c4+ 2.Ka5xa2-d2 Kh2xg3-c3 3.Rf5xd5-h3+ NAc4-e3#.

**Commendation - Alberto Armeni (Italy)** - A pleasant and (probably) difficult to solve Meredith, in which the play contains enough nice Andernach motifs, although this manner of giving mate to the white King is not new (there are some similar mechanisms and methods also in S# genre). I.1.Bb5-a6 Ke4-d5 2.Rc6xc5=b Qa7xa6=w 3.Qa6-e6+ Kd5xe6#; II. 1.Rc6-c7 Ke4-f3 2.Bb5xe2=b Qa7xc7=w 3.Qc7-f4+ Kf3xf4#.

## SECTION "B"

**Vlaicu Crisan &  
S.K. Balasubramanian  
(Romania / India)**

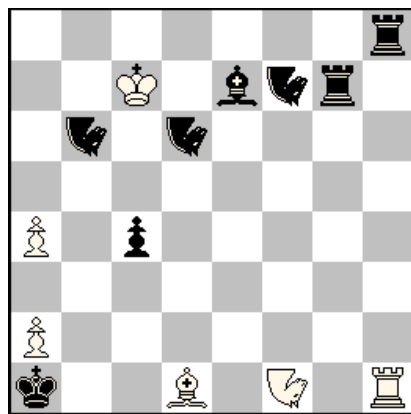
Andon Petkov -100 MT - 2015  
Section "B"  
1<sup>st</sup>-2<sup>nd</sup> Prize



HS#3,5 b)Pd6→e6 (3+7)  
KoBul Kings  
Madrasi Rex Inclusive

**Julia Vysotska  
(Latvia)**

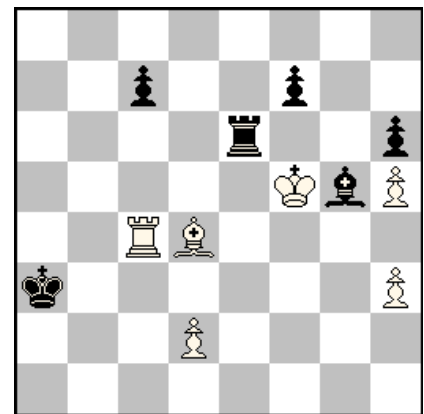
Andon Petkov -100 MT - 2015  
Section "B"  
1<sup>st</sup>-2<sup>nd</sup> Prize



HS#3,5 2 solutions (6+8)  
Take & Make  
Anti-Andernach  
♞♟=Nightriders

**Nikola Predrag  
(Croatia)**

Andon Petkov -100 MT - 2015  
Section "B"  
3<sup>rd</sup> Prize



HS#4 2 solutions (6+6)  
Vogtlaender Chess

**1<sup>st</sup>-2<sup>nd</sup> Prize - Vlaicu Crisan (Romania) & S.K. Balasubramanian (India)** – Another problem of exceptional quality! Here we see creation of white royal battery with wK as a rear piece. There are also exchange of functions between 3 pairs of pieces. **wR/wB**: Passive sacrifice –Vs – forming and firing of battery as front battery piece, capturing black on both occasions (active sacrifice). **bBg6/bRc4**: Active sacrifice –Vs – front battery piece firing with white capture. **bBa6/bRg8**: Rear battery piece –Vs – active sacrifice. Three Kobul King conversions for bK and two for wK. ODT in Meredith! a) 1...Rc4-g4 2.Rh3xf3[f2=rS]+ rSf2xd1[d7=rB] 3.rBd7xg4[d1=rR] Ba6-d3 4.Rf3xd3[d1=rB]+ Bg6xd3[g4=rR]#; b)1...Bg6-d3 2.Bd1xf3[f2=rS] rSf2xh3[d7=rR] 3.rRd7xd3[h3=rB] Rg8-g4 4.Bf3xg4[h3=rR]+ Rc4xg4[d3=rB]#.

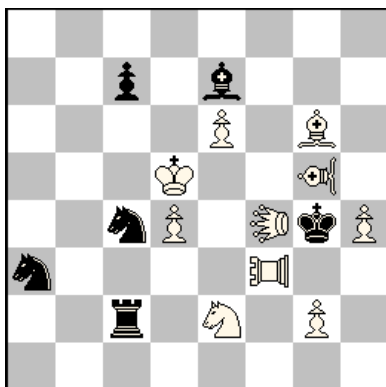
**1<sup>st</sup>-2<sup>nd</sup> Prize - Julia Vysotska (Latvia)** – A unique duel: White B/N/R half-battery against black B/N/R half-battery combined with reciprocal white and black "sacrifices" of the forward half-battery pieces! Active w.King, change of function of three pairs of thematic pieces:

Nb6/Nd6; Bd1/Nf1; Be7/Nf7. Creation of black batteries N/R and B/R, Zilahi theme in an excellent construction! In my opinion, one of the best fairy opuses by Julia, who in recent years has shown sensational class. I.1...Be7-g5=w 2.Nf1-b3=b Nf7xg5-h6+ 3.Kc7xb6-h3 Nd6-b5=w 4.Bd1xb3-d4+ Nh6xd4-g1#; II.1...Nf7-g5=w 2.Bd1-b3=b Be7xg5-h7+ 3.Kc7xd6-h4 Nb6-f4=w 4.Nf1xb3-c2+ Bh7xc2-e1#.

**3<sup>rd</sup> Prize - Nikola Predrag (Croatia)** - The next "Meredith miracle" in this tournament! Looking at the initial position it is very hard to imagine that the stipulation HS#4 is possible! But here the condition "Vogtlaender Chess" operates just fantastically! According to the author's comment the main theme is "Bicolour Indian + Herlin (pericritical move) to selfpin w.Pd2!" Of course, the interpretations of these themes (familiar in other orthodox or fairy genres), are here unusually beautiful and rather difficult to understand by those who do not know well enough the secrets of "Vogtlaender Chess"! I. 1.Bd4-f2 Bg5-d8 2.Rc4-h4 Re6-e4 3.Bf2-e1 Ka3-b4 4.Kf5-f6+ Re4-e7#; II. 1.Bd4-h8 Re6-g6 2.Rc4-g4 Bg5-f6 3.Rg4-g2 Ka3-b2 4.Kf5-g4+ Bf6-g5#.

**Mario Parrinello  
(Italy)**

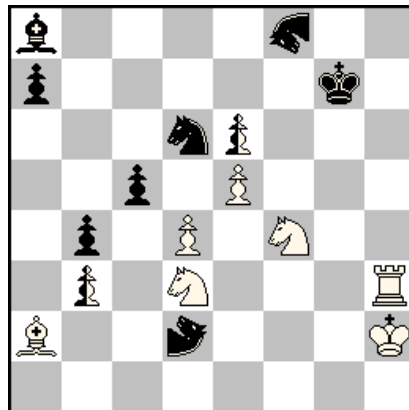
**Andon Petkov -100 MT-2015  
Section "B"  
4<sup>th</sup> Prize**



HS#3,5 b) Sc4→d7 (10+6)  
Take & Make  
♙=VAO; ♚=LEO  
♜=PAO

**Franz Pachl  
(Germany)**

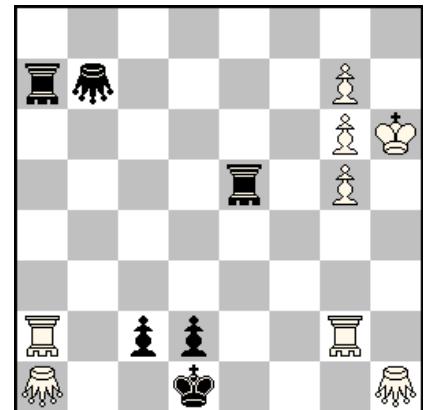
**Andon Petkov -100 MT - 2015  
Section "B"  
5<sup>th</sup> Prize**



HS#4 b) -Pc5 (7+7+2)  
Anti - Circe  
♙=Giraffe  
♚=Camel

**Ladislav Packa &  
Juraj Lorinc  
(Slovakia)**

**Andon Petkov -100 MT – 2015  
Section "B"  
6<sup>th</sup> Prize**



HS#3,5 b) Pc2→e2 (8+6)  
♜♞ = Rookhopper  
♙♚ = Grasshopper

**4<sup>th</sup> Prize - №53 Mario Parrinello (Italy)** - A great strategic problem! Here the initial position also does not suggest the wonderful thematic complex: creation of reciprocal black batteries R/B and B/R plus creation of white batteries using the VAg5 and PAF3 as rear battery-pieces. The sacrifices of the white LEO are another very nice thematic motive! But in my opinion the sacrifices of the b.S (as key-moves) in both phases have a somewhat forced effect. a) 1...Sc4-e3+ 2.VAg5xe3-d1 Be7-c5 3.LEf4-d2 Rc2xd2-a5 3.PAF3-f8+ Bc5xf8-f3#; b) 1...Sd7-f6+ 2.PAF3xf6-g8 Rc2-c6 3.LEf4-f8 Be7xf8-a8 3.VAg5-c1+ Rc6xc1-g5#.

**5<sup>th</sup> Prize - Franz Pachl (Germany)** - A virtuoso play of indirect battery constructed with 3 pieces: Ba2, nPb3 and nPe6. Particularly impressive is the activity of both neutral pawns, who demonstrate a reciprocal exchange of functions with surprising promotions. Very interesting mates in which the nCA and nGI are blocked on squares e1/d1. Without doubt, this



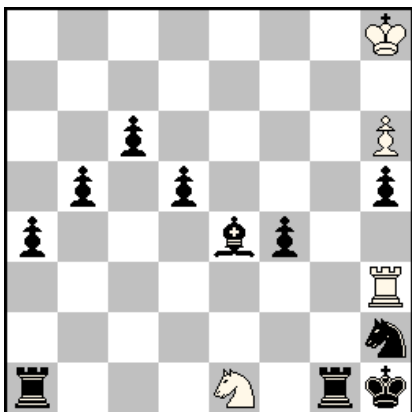


**Special Prize - Jan Golha (Slovakia)** – A remarkable “Four-man” – task that demonstrates six-fold echo with ideal pin-mates inside the three twins! But there is a small negative moment - we see chameleon echo mates only in position a). In the other two positions (b and c), the mates are “only” Echo. a) I.1.nRd5-e5 Ld4xe5-f6+ 2.Rd6xf6 [+nRg5] nRg5-g6[+bLf7] 3.nRg6-g5 nRg5-f5+ 4.Rf6xf5 Lf7xf5-f4 [+nRf2]#; II. 1.Rd6-f6 Ld4xf6-g7 2.Kf3-f4[+wRf7] Lg7xf7-e7 3.Kf4-e3[+wRe6] nRd5-e5+ 4..Re6xe5 Le7xe5-e4[+nRe2]#; b) I.1.Rd7-g7 Ld4xg7-h8 2.Kf3-g3[+wRh7] nRd5-d6 3.Kg3-h4 nRd6-h6+ 4.Rh7xh6 Lh8xh6-h5[+nRh3]#; II. 1.Rd7-e7 Ld4xd5-d6 2.Kf3-e4[+nRc6] Ld6xe7-f8 3.Ke4-f4 [+wRf7] nRc6-f6+ 4.Rf7xf6 Lf8xf6-f5[+nRf3]#; c) I.1.nRd5-c5 Ld4xc5-b6 2.Kf8-g7[+nRd4] nRd4xd7+ 3.Kg7-f6[+wRc6] nRd7-d6+ 4.Rc6xd6 Lb6xd6-e6[+nRg6]#; II. 1.Rd7-c7 Ld4xd5-d6 2.Kf8-f7[+nRd4] Ld6xc7-b8 3.Kf7-f8[+wRc8] nRd4-d8+ 4.Rc8xd8 Lb8xd8-e8[+nRg8]#.

**1<sup>st</sup> Honorable Mention - Jan Golha (Slovakia)** – At first sight this Tanagra problem looks (probably?) like a version – albeit rather distant, of the previous problem. In fact, the play here is longer (5 moves!) and rather different because of the different white material (in this respect, an important factor is the white Pc3) and because of the different mate finales where there are two white blocks but no pinned neutral piece.

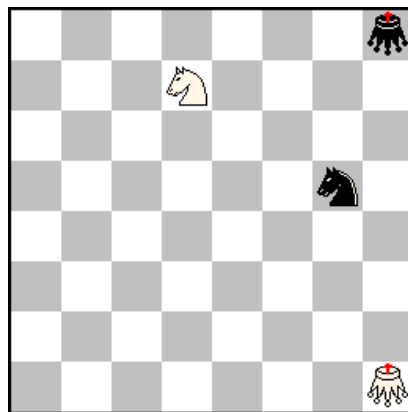
It is not easy to realize triple Chameleon–echo (also with ideal mates!), at this placement of the pieces! Therefore, it is a task of the highest class! I think, however, that here there is some “mechanical analogy” in achieving the goal. I. 1.Kb5-a6 Le7xd6-c5 2.Ka6-a5[+wRd5] Lc5xc3-c2 3.Rd5-c5[+wPb3] Lc2xc5-c6 4.Ka5-a4[+wRc4] Lc6xb7-a8+ 5.Rc4-b4[+wRa7] La8xa7-a6#; II.1.Rd6-b6 Le7xb7-a7 2.c3-c4[+wRb8] La7xb6-c5+ 3.Kb5-c6[+wRc7] Lc5xc4-c3 4.Kc6-b7[+wPb5] Lc3xc7-c8+ 5.Kb7-a6[+wRb6] Lc8xb8-a8#; III. 1.Rb7-d7 Le7xd7-c7 2.Rd6-g6[+wRg7] Lc7xc3-c2 3.Kb5-a6[+wPb4] Lc2xg6-h7 4.Ka6-a5[+wRg5] Lh7xg7-f7 5.Rg5-b5[+wRb7] Lf7xb7-a7#.

**Sven Trommler (Germany)**  
Andon Petkov -100 MT - 2015  
Section "B"  
2<sup>nd</sup> Honorable Mention



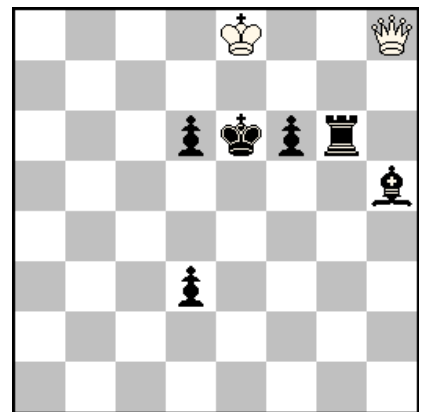
HS#4 b) Black Bh2 (4+11)  
Circe

**Juraj Lorinc (Slovakia)**  
Andon Petkov -100 MT - 2015  
Section "B"  
3<sup>rd</sup> Honorable Mention



HS#4\* (2+2)  
SAT  
♁♁ = Royal Grasshoppers

**Alberto Armeni & Vito Rallo (Italy)**  
Andon Petkov -100 MT - 2015  
Section "B"  
4<sup>th</sup> Honorable Mention



HS#4 b) Pf6→f5 (2+6)  
Circe

**2<sup>nd</sup> Honorable Mention - Sven Trommler (Germany)** – The author’s comment: "2 Rundlauf of w.Rook in very different ways". In my opinion this HS#4 is really an interesting and non-standard problem! But here it is obvious that in b) solution the Rook’s way we can accept as a "Rundlauf" only very conditionally. On the other hand the answer to the question: "Whether this construction is the optimal?" would be quite disputable. a) Rh3-g3 Sh2-g4 2.Rg3xg4[+bSg8] Ra1-a3 3.Rg4-h4+ Ra3-h3 4.Rh4xh3[+bRa8]+ Sxh6[+wPh2]#; b) 1.Rh3-

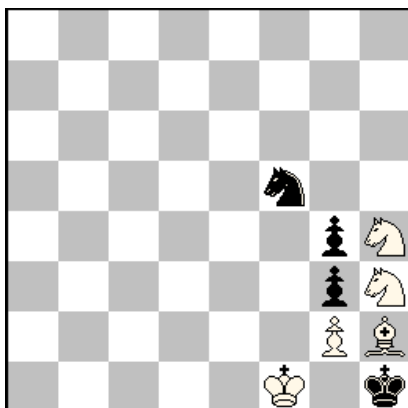
**h4 Ra1-a2 2.Rh4xh2[+bBf8]+ Ra2xh2[+wRa1] 3.Ra1-a3 Rh2-h3 4.Ra3xh3[+bRa8]+ Bf8xh6 [+wPh2] #.**

**3<sup>rd</sup> Honorable Mention - Juraj Lorinc (Slovakia)** – A very elegant four-man problem which demonstrates the specificity and beauty of the condition SAT! The moves by both royal Grasshoppers and the cross-checks before the mates are beautiful, surprising and typical for this condition! The small minus here is the repetition of the black move Sf3 in both phases. Set-play: 1...Sg5-e6 2.Sd7-e5+ Se6-d4 3.Se5-g4+ rGh8-c3 4.Sg4-e3+ Sd4-f3#; 1.Sd7-c5 Sg5-f3+ 2.Sc5-e4 Sf3-h2+ 3.rGh1-d5+ Sh2-g4+ 4.Se4-f6+ Sg4-e5#.

**4<sup>th</sup> Honorable Mention - Alberto Armeni & Vito Rallo (Italy)** - An interesting problem, which belongs to the so-called ANI type (problems with solutions that are thematically anti-identical). In position a) we see a paradoxical "translation" (full transformation) of the initial black battery Rg6/Bh5 through captures of both battery-pieces: **a) 1.Qh8xh5[+bBc8] Rg6-g7 2.Qh5-e5+ d6xe5[+wQd1] 3.Qd1-a4 Rg7-d7 4.Qa4xd7[+bRa8]+ Bc8xd7[+wQd1]#.** As you see, the initial battery Rg6/Bh5 is transformed into battery Bc8/Ra8. **b) 1.Qh8-a1 d3-d2 2.Qa1-e1+ d2xe1=Q[+wQd1] 3.Qd1-e2+ Ke6-f6 4.Qe2-e7+ Qe1xe7[+wQd1]#.** Here we see other content – promotion of black Queen and bicolour Bristol (wQ/bQ) but unfortunately the pieces Rg6/Bh5 are only static.

**Kenneth Solja  
(Finland)**

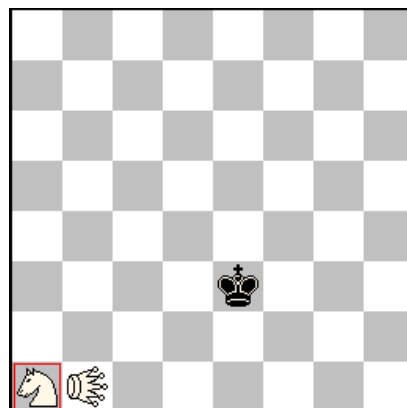
**Andon Petkov -100 MT - 2015  
Section "B"  
5<sup>th</sup> Honorable Mention**



**HS#4 3 solutions (5+4)  
Einstein Chess  
Circe Parrain**

**Janos Mikitivics  
(Hungary)**

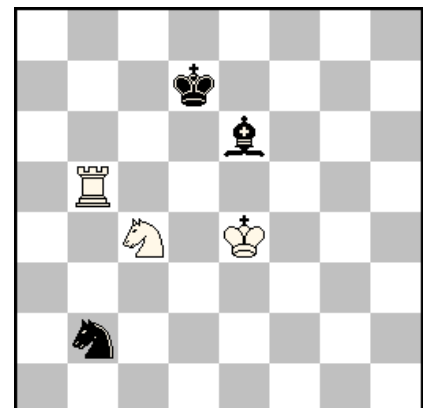
**Andon Petkov -100 MT - 2015  
Section "B"  
Commendation**



**HS#7 b) KHb1→e1 (2+1)  
Swapping-Kings  
KoBul Kings  
♔ = royal Sa1  
♚ = King-Hopper**

**Jaroslav Stun  
(Slovakia)**

**Andon Petkov -100 MT - 2015  
Section "B"  
Commendation**



**HS#4,5\* 2 solutions (3+3)  
KoKo  
Circe Parrain**

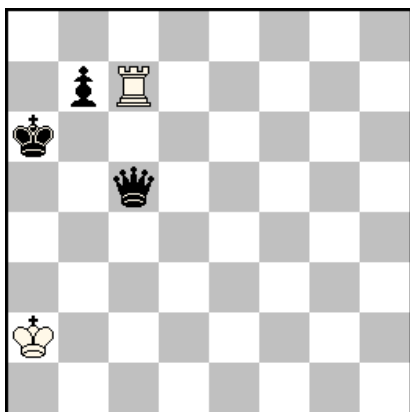
**5<sup>th</sup> Honorable Mention - Kenneth Solja (Finland)** - Another very interesting problem of ANI-type! There is no thematic identity between the three solutions but in each of them we see a greater dynamism and play of all white and black pieces! This is difficult to achieve while reconciling the two stipulations Einstein & Circe Parrain!

**I. 1.Sh4-f3=P g4xf3=S 2.Bh2-g1=S[+wPe2] Sf3-g5=P 3.Sh3xg5=B Sf5-e3=P[+bPf3] 4.g2xf3=S g3-g2[+bPf2]#; II. 1.Bh2-g1=S Kh1-h2 2.Sh4xf5=B g4xh3=S[+bSg4] 3.Sg1-e2=P[+wSf4] Sg4-f2=P 4.Sf4xh3=B Kh2-h1[+bSh2]#; III. 1.Bh2xg3=R Sf5-d6=P[+bPe4] 2.Rg3-d3=B g4xh3=S 3.g2xh3=S e4xd3=S[+bSg2] 4.Sh4xg2=B[+wBc1] + Kh1-h2[+bSg3]#.**

**Commendation - Janos Mikitivics (Hungary)** - A very nice Chameleon-Echo with only 3 pieces on the board! The content is rich in Swapping-Kings motives, but unfortunately the second condition, KoBul-Kings, "works" only on the last move. There is also fairly major, but not quite desirable, analogy between the manner of the play in both solutions. a) 1.rSa1-c2[Ke3<->Sc2]+ Kc2-b2 2.KHb1-b3 Kb2-c3 3.rSe3-d5[Kc3<->Sd5]+ Kd5-d4[Kd4<->Sc3]+ 4.rSd4-c6 Kc3-c4 5.KHb3-d5 Kc4-b5[Kb5<->Sc6]+ 6.rSb5-a7[Kc6<->Sa7]+ Ka7-a8 7.KHd5-b7 Ka8xb7 [c6=rKH] [Kb7<->KHc6]#; b)1.rSa1-b3 Ke3-f2 2.KHe1-g3 Kf2-f3 3.rSb3-d4[Kf3<->Sd4]+ Kd4-e4 [Ke4<->Sf3]+ 4.rSe4-f6 Kf3-f4 5.KHg3-e5 Kf4-g5[Kg5<->Sf6]+ 6.rSg5-h7[Kf6<->Sh7]+ Kh7-h8 7.KHe5-g7 Kh8xg7[f6=rKH] [Kg7<->KHf6]#.

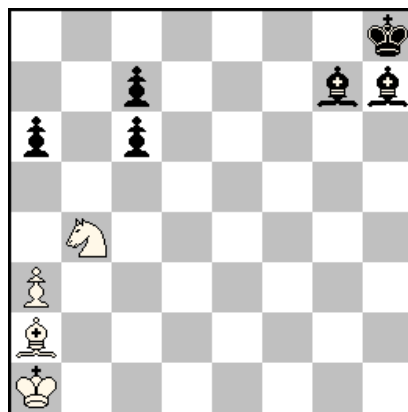
**Commendation - Jaroslav Stun (Slovakia)** - An elegant "Aristocrat" with only 6 pieces, set-play and two nice solutions! Unfortunately here in all three phases the black move Kd7-c6 is repeated. **Set-play:** 1... .. 2.Ke4-d4 Kd7-c6 3.Rb5-b3 Sb2-d3 4.Rb3xd3 Be6xc4[+bSb1] 5.Kd4xc4[+wSb4]+ Sb1-d2[+bBe5]#; I. 1...Sb2xc4 2.Ke4-d3[+wSb3] Kd7-c6 3.Rb5-e5 Sc4-b2 4.Sb3-c5 Kc6-b5 5.Sc5xe6+ Kb5-c4[+bBf5]#; II. 1...Sb2-a4 2.Rb5-f5 Sa4-c3+ 3.Rf5-f6 Be6-f7 4.Sc4-d6 Kd7-c6 5.Sd6xf7+ Kc6-d5[+bBg6]#.

**Jan Golha (Slovakia)**  
Andon Petkov -100 MT - 2015  
Section "B"  
Commendation



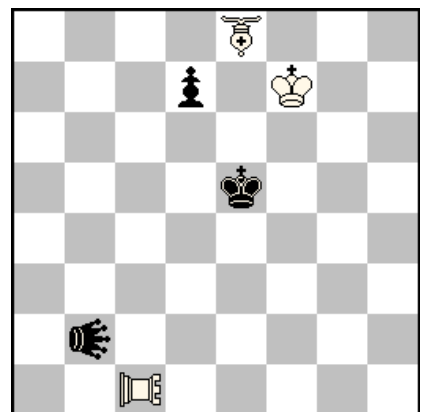
HS#4 2 solutions (2+3)  
Circe Parrain

**Lubos Kekely & Juraj Lorinc (Slovakia)**  
Andon Petkov -100 MT - 2015  
Section "B"  
Commendation



HS#6 SAT (4+6)

**Janos Mikitivics (Hungary)**  
Andon Petkov -100 MT - 2015  
Section "B"  
Commendation



a) HS#5,5; b) HS= =5,5 (3+3)  
KoBul Kings Swapping Kings  
♞=Locust  
♝=Bishop-Lion  
♞=Rook-Locust

**Commendation - Jan Golha (Slovakia)** - A "Tanagra" of modest format but with Chameleon-echo mates and an interesting duel between the white Rook and black Pawn. A surprising moment before the mate is the black zugzwang. I.1.Rc7-c6+ b7xc6 2.Ka2-b2[+wRd6] Ka6-a5 3.Rd6xc6 Qc5-a3[+bPa4]+ 4.Kb2xa3 Ka5-b5[+bQb3]#; II. 1.Rc7xb7 Qc5-d5[+bPc7]+ 2.Ka2-a3 Qd5-c6 3.Rb7xc7 Qc6-a4[+bPa5]+ 4.Ka3xa4 Ka6-b6[+bQb4]#.

**Commendation - Lubos Kekely & Juraj Lorinc (Slovakia)** - A nice SAT - problem with logical character. The tempo-play here is well motivated. **Thematic try:** 1.Sxc6? a5 2.Sb8 a4 3.Sd7 c5 4.Sf8 Bg8+ 5.Bb1 c4+ 6.Ka2!; 1.a3-a4 a6-a5 2.Sb4-a6 c6-c5 3.Sa6xc5 c7-c6 4.Sc5-d7 c6-c5 5.Sd7-f8 Bh7-g8+ 6.Ba2-b1 c5-c4#.

**Commendation - Janos Mikitivics (Hungary)** - A very curious stipulation and difficult play in both phases. But the play is rather technical and both fairy conditions are not used homogeneously in the two parts. a) HS#5,5 1...d7-d5 2.BLe8-g6 d5-d4 3.Kf7-g7 d4-d3 4.BLg6-c2 d3xc2[g7=rBL] 5.LRc1xc2-c3 Ke5-f6[Kf6<->BLg7]+ 6.rBLf6xb2[g7=rL][Lg7<->BLb2]+ rLb2xc3-d4[g7=rLR][Ld4<->LRg7]#; b) HS= =5,5 1...Ke5-f4 2.BLe8-b5 d7-d5 3.Kf7-g6 d5-d4 4.Kg6-h6 Lb2xb5-b6[h6=rBL] 5.rBLh6-d2 Kf4-e3[Ke3<->BLd2]+ 6.rBLe3xb6[d2=rL] d4-d3 = =.

JUDGE:



**IGM PETKO PETKOV**  
International judge of FIDE  
Sofia 01.02.2015