

BROODINGS...

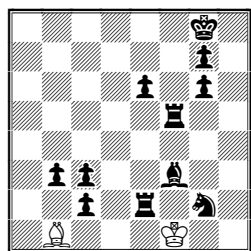
N° 37: July 2007

brood: to ponder morbidly or persistently [Collins Dictionary]

C.J.Feather 10 Tinwell Road STAMFORD PE9 2QQ England [cfeather@ukonline.co.uk]

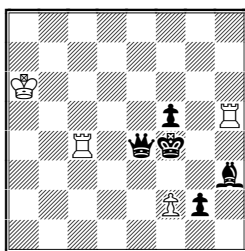
It is not long since the last issue, but for once we have a deadline, as shown by the first problem! In that case it is obvious what gave rise to the composition, but at times inspiration can come from unexpected quarters. In the case of **6** it was a re-reading of Pascal's *Pensées* ("Tout le malheur des hommes vient d'une seule chose, qui est de ne savoir pas demeurer en repos...") and the connection may become obvious to solvers. Often however my inspiration is musical, and oblique. I shall not attempt to explain the link in my mind between **3** and Jacob Obrecht! Relationships between problems are easier to grasp, and the reader may well see what **10** and **11** have in common, even though the locusts are of different colours. Finally a comment on a relationship between the phases of one composition: artistically the two parts of **9** are too similar, but this is meant as a didactic piece, showing the logical (and technical) closeness of the two themes. The two set lines in **12** are normal serieshelpmates. Best wishes to all.

1. to JMR * 19/7/1937



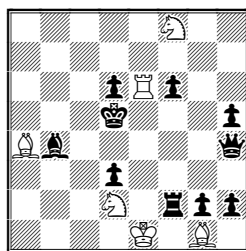
h#6

2.



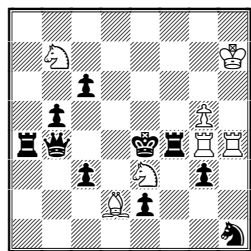
h#2 3 solutions

3.



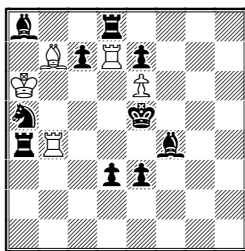
h#2 3 solutions

4.



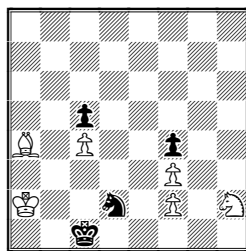
h#2 b) b7=>♙
c) & ♗b7>a6

5.



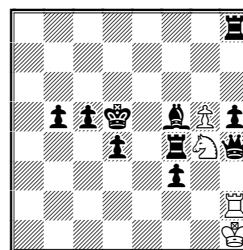
h#2½ 3 solutions

6.



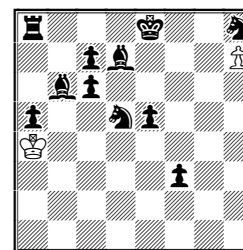
h#3 2 solutions

7.



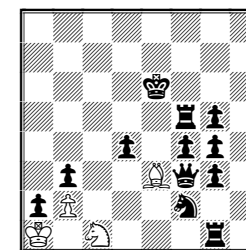
h#3 b) ♗d4>d3

8.



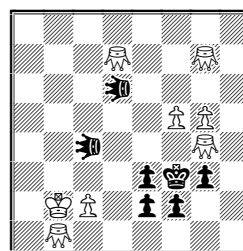
h#4 2 solutions

9.



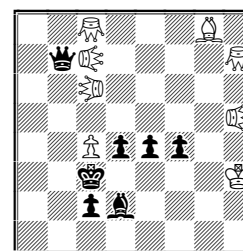
h#4½ b) ♗c1>d1

10.



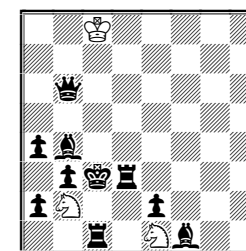
h#2½ 2 solutions
Locusts ♗ &
Grasshoppers

11.



h#2½ 2 solutions
Grasshoppers, Locusts ♗ &
& Equihopper ♘

12.



White moves, then
serieshelpmate in 4**

SOLUTIONS:

1 1.Rd2 Bxc2 2.Rd8 Kf2 3.Rh5 Kxf3 4.Rh8 Kg4 5.Kh7 Kg5 6.Rg8 Bxg6# Sorry, John, the planned h#70 was impossible to get sound. Many Happy Returns anyway! 2 1.Kf3 Rh4 2.Qe2 Rhf4#, 1.Kg4 Rxf5 2.Qf4 Rxf4# & 1.Ke5 Rh6 2.Qd5 f4# 3 1.Qc4 Rxf6 2.Rf5 Rxf5#, 1.Qh3 Sg6 2.Rf4 Sxf4# & 1.Qg5 Bd1 2.Rf3 Bxf3# 4 a) 1.Ke5 Bxc3 2.Rd4 Re4# b) 1.Kf3 Bxc6 2.Re4 Rf4# c) 1.Kd3 Bxb5 2.Rc4 Rd4# 5 1...Rxf4 2.Re4 Rxc7 3.Kd4 Rxe4#, 1...Bh1 2.Bg2 Rb5 3.Ke4 Bxg2# & 1...Rxd3 2.Rd5 Re4 3.Kd6 Rxd5# 6 1.Sxc4 Sf1 (Sg4?) 2.Sd2 Sg3 3.c4 Se2# & 1.Sxf3 Sg4 (Sf1?) 2.Sd2 Se5 3.f3 Sd3# 7 a) 1.Qg3 (Qxg5?) Rc2 2.Bd3 Rxc5 3.Ke4 Re5# b) 1.Qxg5 (Qg3?) Rd2 2.Rb4 Rxd3 3.Kc4 Se5# Black battery building is not easy to combine with mates on the same square. 8 1.Ba7 Kxa5 2.0-0-0 Ka6 3.Rg8 hxg8Q 4.Be8 Qxe8# & 1.Sg6 h8Q 2.Sf8 Qxe5 3.Se7 Qxa5 4.0-0-0 Qa8# 9 a) 1...Bxf4 2.Se4 Be3 3.Ke5 Bxg1 4.Kf4 Be3 5.dxe3 Sd3# Double switchback and sacrifice. b) 1...Bxd4 2.Se4 Bxg1 3.Ke5 Be3 4.fxe3 Sf2 5.Kf4 Sd3# Circuit e3-d4-g1-e3 and sacrifice. 10 1...Ge6 2.Lxe6-f7 Gdg4 (Ggg4?) 3.Lxf5-f4 Gb3# (Gd3?) & 1...Gg6 2.Lxg6-h6 Ggg4 (Gdg4?) 3.Lh6xf4 Gd3# (Gb3?) Changing shifts on g4, and double dual avoidance. 11 1...Gd3 2.Qxc7 (Qxc6?) Lxe4-f3 3.Qc6 Lxc6-b7# & 1...Ed3 2.Qxc6 (Qxc7?) Lxf3-g3 3.Qc7 Lxc7-b8# Dual avoidance to preserve hurdles. The first moves shield the BK. 12 Set: 1.Rb1 2.Kxb2 3.Ka1 4.b2 Sc2# & 1.Rd1 2.Kd2 3.Kxe1 4.Bd2 Sxd3# (Zilahi). Solution: Sc2 then 1.bxc2 2.Kb3 3.Ka3 4.Rb3 Sc4#