



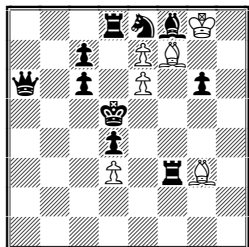
BROODINGS... N° 15: October 2003

brood: to ponder morbidly
or persistently
[Collins Dictionary]

New chess problems
by C.J.Feather
10 Tinwell Road GB-STAMFORD PE9 2QQ
[cfeather@ukonline.co.uk]

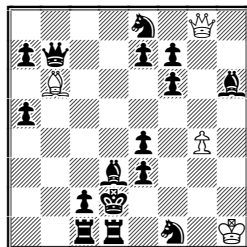
Evidently my rate of brooding is hard to predict, since this issue appears rather sooner than expected. After 12 *Moultings*, 4 *Hatchings*, 9 *Scrapings* and now 15 *Broodings* it seems that I still have a few ideas, though the traditionalists will be sorry to hear that the best ones are nowadays to be found among the unorthodox problems. The hopping animals on show this time have all been seen here before except for the lions, which are like grasshoppers but able to move to *any* square beyond a single other piece. The neutrals may be considered as of either colour by the side whose turn it is; and Circe rebirths of unorthodox units occur on the promotion square of the file of capture.

1. cyclic triangle



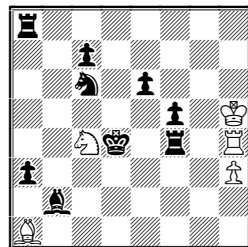
h#2 3 solutions

2. too easy for a hint



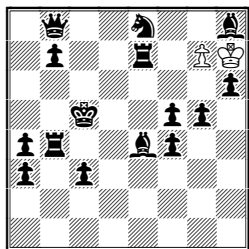
h#2 b) ♖b6>b5

3. unexpected blocks?



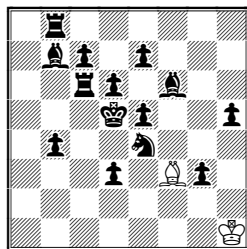
h#3 b) ♘c4>e5

4. it works both ways...



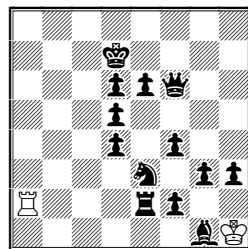
h#3 2 sols b) ♔>h1

5. open for business



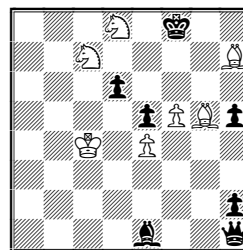
h#4 b) ♖d6>d4

6. rooks don't fly like crows!



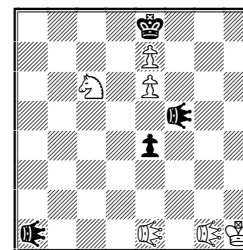
h#6

7. this trip'll be easy to avoid



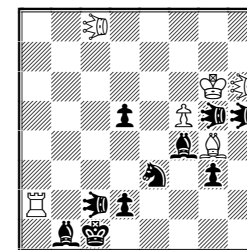
sh#5 3 solutions

8. how to unpin lions – easy!



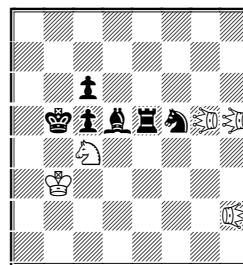
h#2 2 solutions
Lions

9. cyclic pin effects



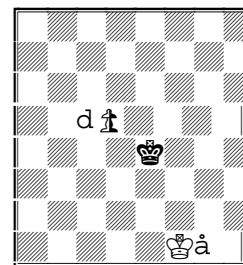
h#2 3 solutions
Kangaroos

10. cyclic battery/pin effects



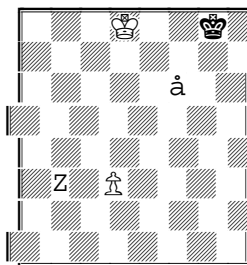
h#2 3 sols Circe
Kangaroos & Locust

11. promotions & echoes



h#4 2 solutions
Circe; Lion

12. for the really strong solver



sh#18
Circe
Grasshopper & Locust

SOLUTIONS TO BROODINGS 12:

1 1.Kxg4 Qa8 2.fxe1R Qg2#, 1.Ke4 Kc5 2.fxe1B Qb1# & 1.Kg5 Se5 2.fxe1S Qc1# Already quoted in *Orbit* – thanks, Živko! 2 1... f4 2.Rg8 f8Q 3.Rxf4 Qxf4# & 1... e4 2.Re8 fxe8Q 3.Rxe4 Qxe4# 3 a) 1.Kf5 Kb1 2.Qf4 Qg8 3.Re5 Qg6# b) 1.Ke5 Kc1 2.Qe4 Qf7 3.Rd5 Qf6# Dual avoidance on White's first move. 4 a) 1.Rb4 Bb6 2.Sg2 Bxg1 3.Sh4 Sg5# b) 1.Rd4 Ba5 2.Sf1 Be1 3.Sh2 Sxf4# 5 1.Re8 Re7 2.Rxe7 dxe7 3.Bb2 e8Q 4.Kc1 Qe1# 6 a) 1.Kc6 e4 2.Bc7 Rxd3 3.Sb6 Rd5 4.Qb5 axb5# b) 1.Kc5 e3 2.Rc6 Rxd3 3.Qd1 Rb3 4.Qd6 Rb5# 7 1... Ba1 2.Qd6 Bh8 3.Qg6 hxg6 4.Kc1 g7 5.Kb2 g8Q 6.Ka3 Qb3# Now the example for the 191st theme tourney of *Die Schwalbe*, requiring h#n/2s in which the same white piece makes a tempo move followed by a hideaway. The judge is Hans Gruber. 8 1... Bd1 2.Bd3 Bxa4 3.Bxe2 Kxe2 4.Qe1 Kd3 5.Kxa4 Kc4 6.Qa5 b3# The idea was to show the to and fro movements of the WB and BQ in parallel. 9 1.Ba3 e3 2.Bc1 exd4 3.h1R dxe5 4.Rh7 e6 5.Bh6 e7 6. Bf8 exf8Q# No anticipation reported! 10 1.Se7 Ee8 2.Sf5 Eg8#, 1.Se5 Ee6 2.Sf3 Eg4#, 1.Rf5 Eg8 2.Qd8 Ee8# & 1.Rf3 Eg4 2.Qd7 Ee6# The BQ moves prevented in the first pair are used as selfpins in the second pair. That was the main idea, the double white AB/BA switch being a nice bonus. Surely the first TF-problem with equihoppers? 11 1... Kf1 2.Qb6 Eb7 3.Qf6 Ef5 4.Qe5 Ed5 5.Qh2 Ef3# & 1... Kf2 2.Qc3 Kf1 3.Qg7 Eh7 4.Qe5 Eh5

5.Qh2 Eh3# Controlling the BQ on an open board is an interesting challenge. **12** 1...Rd5#
1.Gh4 4.Gxf3 5.Ke4 6.Gd5 9.Kc5 10.Gb5 11.Kb4 12.Gb3 15.Kc2 18.Gd2 21.Kf2 22.Gg2 24.Kh1 Rd1#