



BROODINGS...

No.5: May 2002

brood: to ponder morbidly or persistently

[Collins Dictionary]

New chess problems by C.J.Feather
10 Tinwell Road

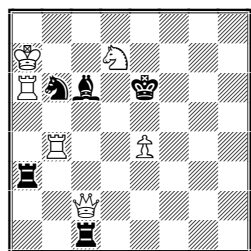
[cfeather@ukonline.co.uk]

GB-STAMFORD PE9 2QQ

The equihopper (no.10) hops over any unit on any straight line to the square an equal distance beyond. Experts will know that there are two kinds of equihopper, the original type (a line piece which may be interfered with) and the non-stop variety (a leaper which cannot be interfered with). Here the equihoppers could all be of either kind.

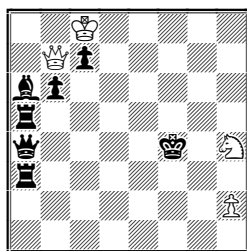
Comments are most welcome, as always. Best wishes to all readers.

1.



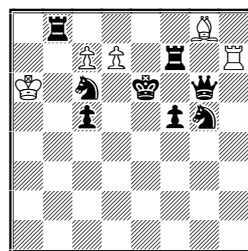
h#2 2 solutions

2.



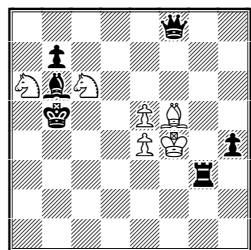
h#2 3 solutions

3.



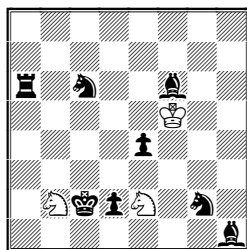
h#2 2 solutions

4.



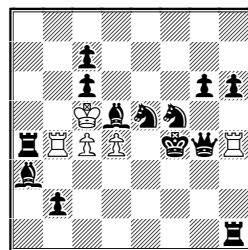
h#2½ 2 solutions

5.



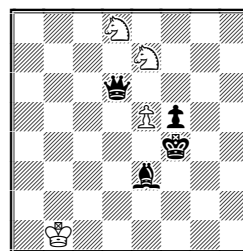
h#3 2 solutions

6.



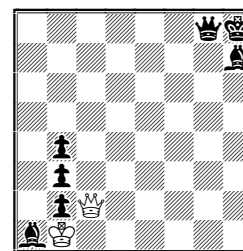
h#3 b) ♞f5>f3

7.



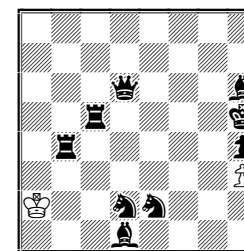
h#4 b) - ♚f5

8.



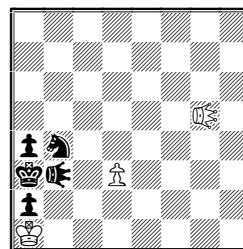
h#5

9.



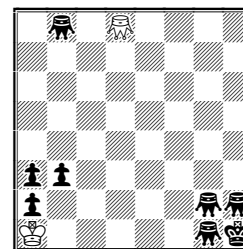
h#6 b) ♞d2>d3

10.



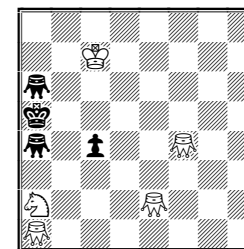
h#4* b) b4=>♞
Equihoppers

11.



h#7*

12.



sh#8*

SOLUTIONS TO BROODINGS 3:

1 a) 1.Qxe5 cxb8Q 2.Qc5 Qxb4# b) 1.Qxe4 cxd8Q 2.Qc6 Qd5# **2** 1.Qa5 gxf5 2.Rb4 Re4# & 1.Qd8 Sxh5 2.Bd6 Re5# **3** 1.cxb4 Qc2 2.Re6 dxe6# & 1.Bxb4 Bf5 2.Rc6 dxc6#
4 1.Kd4 Bd5 2.Rxe5 Qxe5# & 1.Kf4 Sf7 2.Rxe4 Qxe4# **5** 1.Ke1 Ra1 2.Qd1 Bb4#, 1.Kxg3 Bd6 2.Qe5 Qe3# & Kf3 Qxb7 2.Qe4 Ra3# **6** 1.Rd7 Rb8 2.Rxd4 Qxd4#, 1.Qd5 Bh6 2.Qxc4 Qxc4#, 1.Kb3 Bf8 2.Rxc4 Qxc4# & 1.Kd3 Re8 2.Bxd4 Qxd4# **7** 1.Sxb7 cxb8Q 2.Sd8 Qxb6 3.Kf4 Qe3# & 1.Rxc6 c8Q 2.Ra6 Qxc5 3.Kf3 Qf2# **8** 1.Kxg4 Bd3 2.Qe4 Bf1 3.Kf5 Bh3# & 1.Kf3 Bc2 2.Qd3 Ba4 3.Ke4 Bc6# **9** 1.Qf5 Kd2 2.Bb7 Kc3 3.Ka7 Kb4 4.Ka6 Qa5# & 1.Qd3 Kf2 2.e1B Kg1 3.Bf2 Kxh1 4.Ba7 Qc6#.
10 1.Rh3 Gh4 2.Ge7 Gd8#, 1.Rh4 Gh5 2.d5 Gc5#, 1.Rh5 Gh6 2.Se3 Gd2# 1.Rh6 Gh7 2.Gb7 Ga7# & 1.Rh7 Gh8 2.Sb2 Ga1# **11** 1... Gg5# 1.Gd1 2.Gf3 3.Gd3 4.Ga6 5.Gc4 6.Gf7 7.Ge7 8.Gg7 9.Gh7 10.Gh5 Sg5# **12** 1...Rh7# 1.Gh2 2.Gh4 3.Ga4 4.Gc4 5.Gb3 6.Gd5 7.Ge6 8.Gf7 9.Kg7 10.Kf6 11.Gf5 12.Gg4 13.Gxh3 14.Gf5 15.Gf7 16.Kg6 17.Gg7 18.Kh7 19.Kh8 20.Gh7 Rd8#